

TI GUI 2.2.0.5 Vs 3.2.0.6

**EVM Information**

**EVM Component Set**

DMD: DLP3010 (.3 720p) [Show Datasheet on TI.com](#)

Controller: DLPC3478 [Show Datasheet on TI.com](#)

PMIC/LED Driver: DLPA2005 [Show Datasheet on TI.com](#)

**Version Information**

EVM Software: 9.0.0

EVM Firmware: 9.0.1

GUI Software: 2.2.0.5

**Errors**

System Error

Flash Error

DMD Error

Communication Error

Sequence Error

LED Error

**Temperature**

Ambient: 0° C

[?](#) [↓ Get](#)

**EVM Information**

**EVM Component Set**

DMD: DLP3010 (.3 720p) [Show Datasheet on TI.com](#)

Controller: DLPC3478 [Show Datasheet on TI.com](#)

PMIC/LED Driver: DLPA2005 [Show Datasheet on TI.com](#)

**Version Information**

EVM Software: 9.0.0

EVM Firmware: 9.0.1

GUI Software: 3.2.0.6

**Errors**

System Error

Flash Error

DMD Error

Communication Error

Sequence Error

LED Error

**System Temperature**

Ambient: 0° C

[?](#) [↓ Get](#)

<Beam FW From TI GUI2.2.0.5 >

<Beam FW From TI GUI3.2.0.6>

Backup Firmware    Update Firmware    **Update Flash Image**

Update Flash Image

Select the EVM type

DLP3010EVM-LC

Select flash image to update (input)

**!LightControl\FWSeI\_DLPC3478\_DLPA2005\_pm1\_i2c0x36\_v9p0p1.img**

Select the name of the updated flash image (output)

P1\_1bit\_480fps\_12pattern\_40Hz\_Pre177\_EXP1874\_Post32\_RGB125.img

Batch Files

Batch File 1

Batch File 2

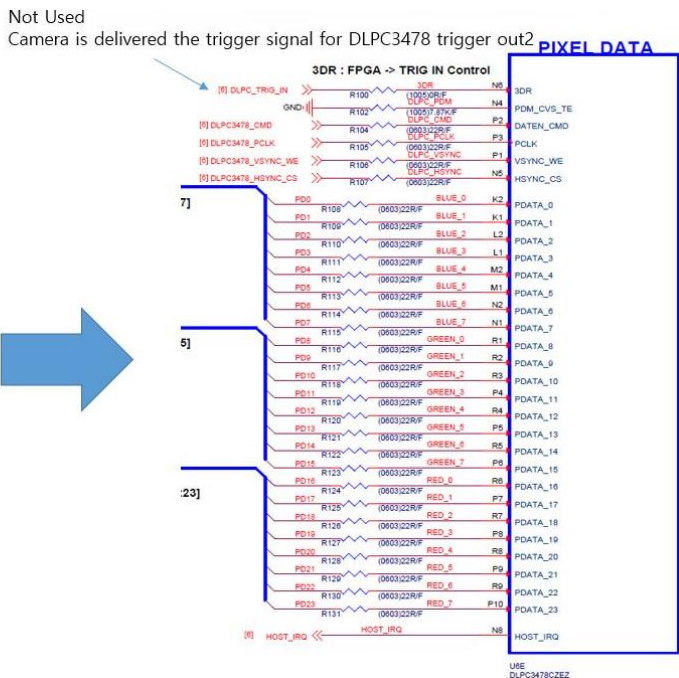
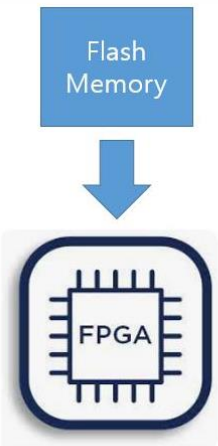
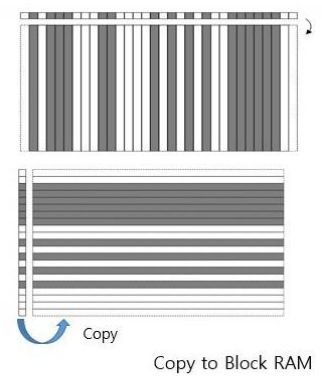
Batch File 3

Note: One of the user defined batch file must setup up the start-up options.

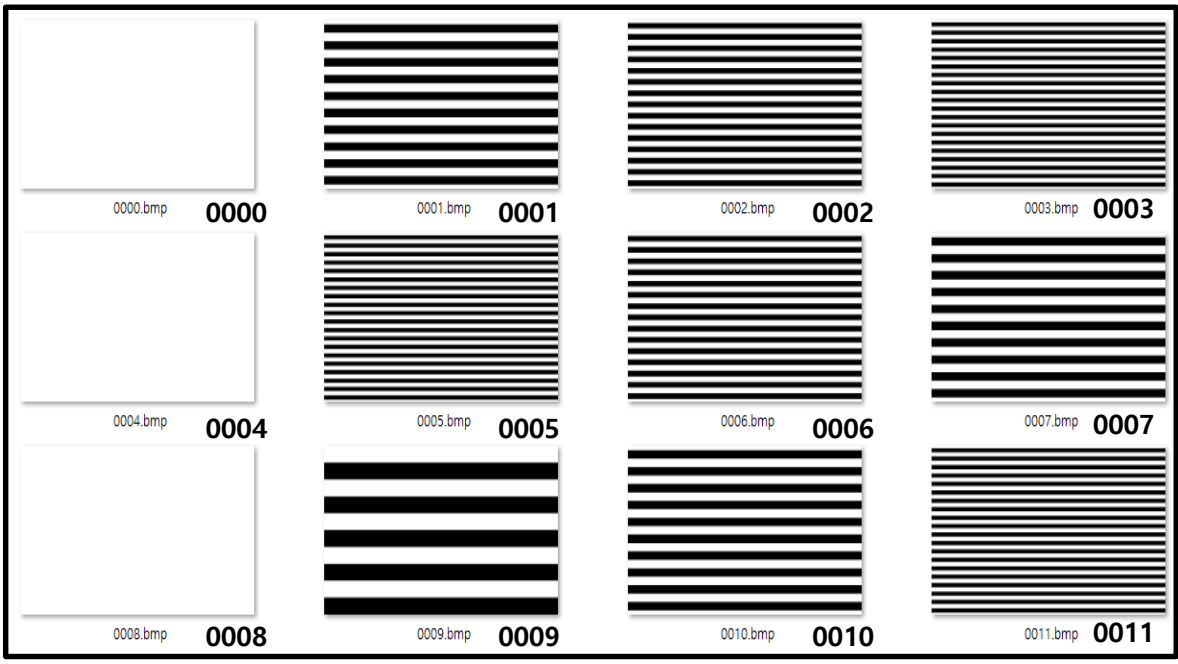
Pattern Data File

Pattern File

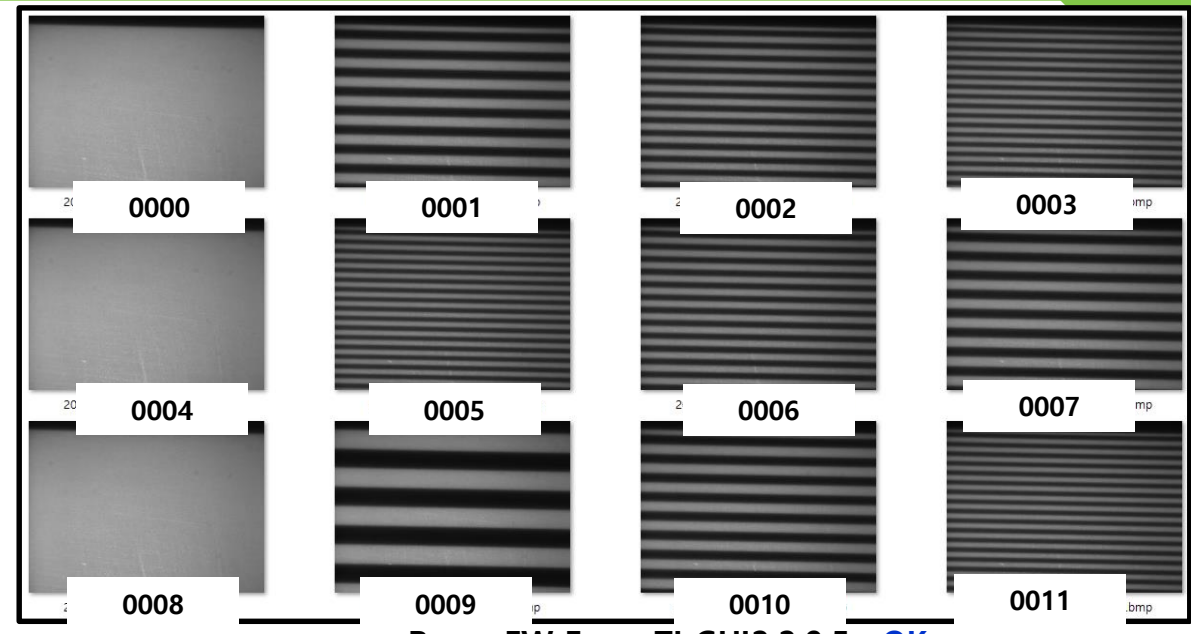
Not use



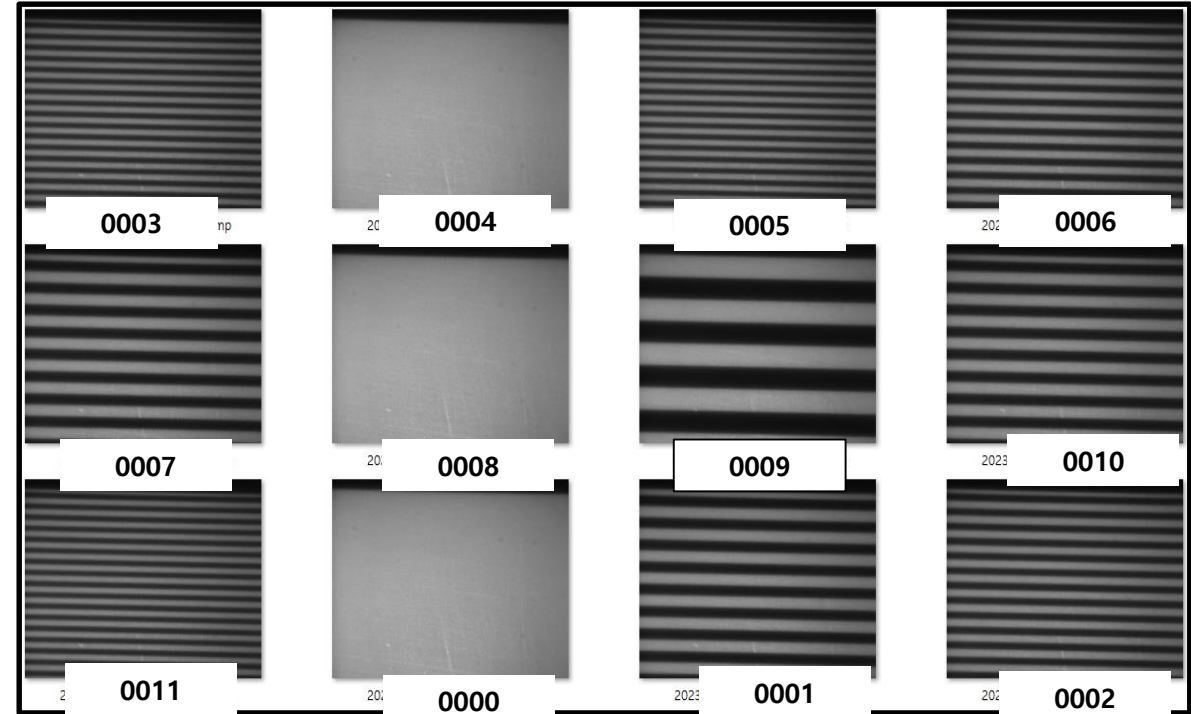
TI GUI 2.2.0.5 Vs 3.2.0.6



<Pattern Original Image>



<Beam FW From TI GUI2.2.0.5 : OK>



<Beam FW From TI GUI3.2.0.6 : NG>

1. Define pattern configuration

Frame Rate (Hz)	20.02002	Pre-exposure Dark Time (us)	8650
Illumination	B	Exposure Time (us)	3000
Bit Depth	8	Post-exposure Dark Time (us)	5000
Patterns Per Frame	3		

2. Define trigger out settings

Trigger Out	Enable	Invert	Delay (us)
Trigger Out 1	<input checked="" type="checkbox"/>	<input type="checkbox"/>	0
Trigger Out 2	<input checked="" type="checkbox"/>	<input type="checkbox"/>	0

3. Review the timing diagram to verify the pattern configuration

Pattern/Frame: Shows three frames, each containing a blue PData block.

Trigger 1: Shows a single pulse at the beginning of the first frame.

Trigger 2: Shows three pulses, each corresponding to the start of a PData block in a frame.

Buttons: ? Get Set