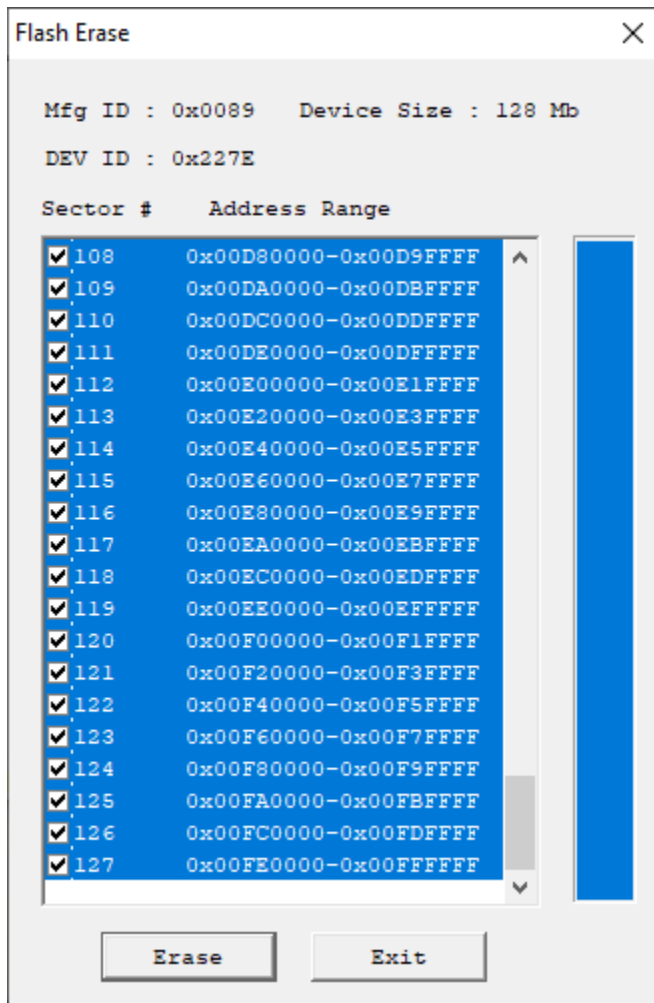
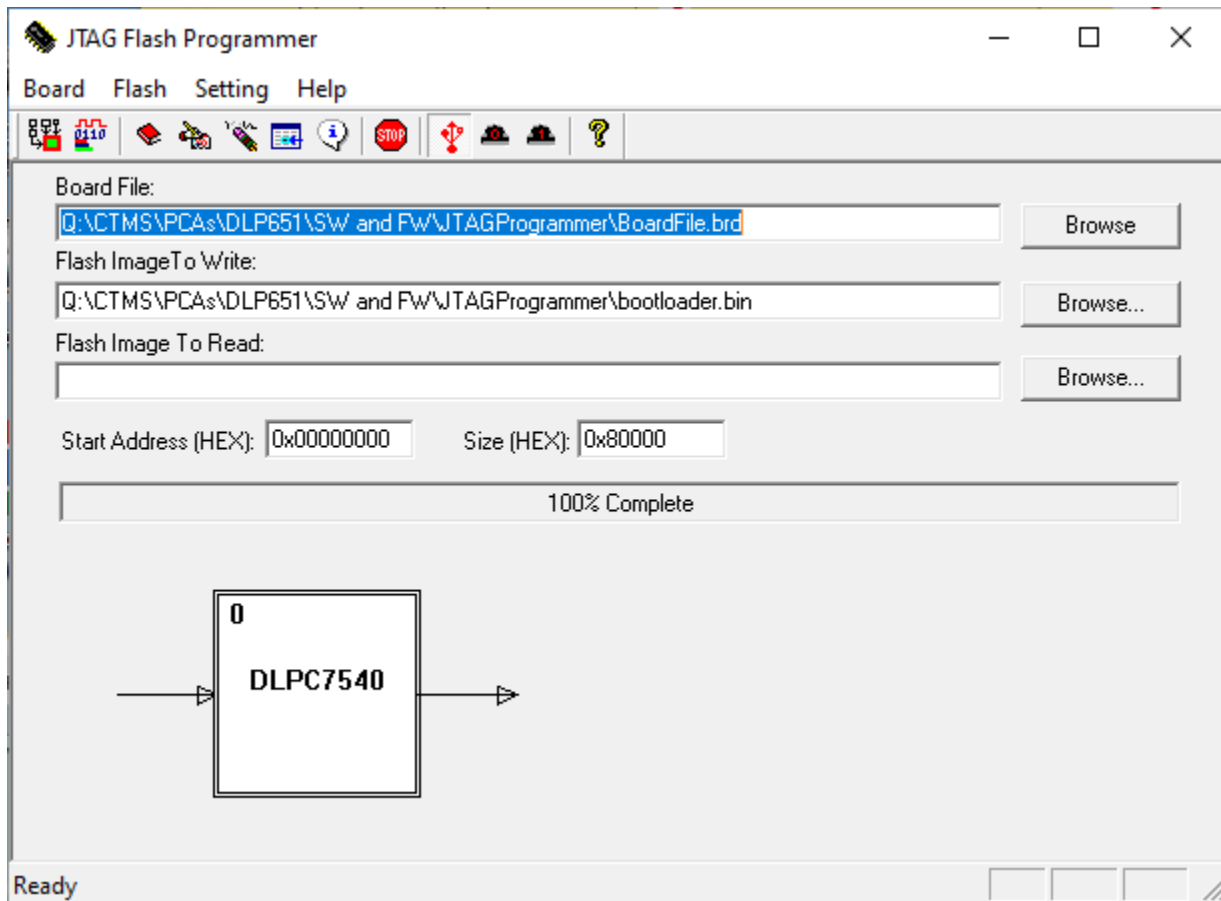


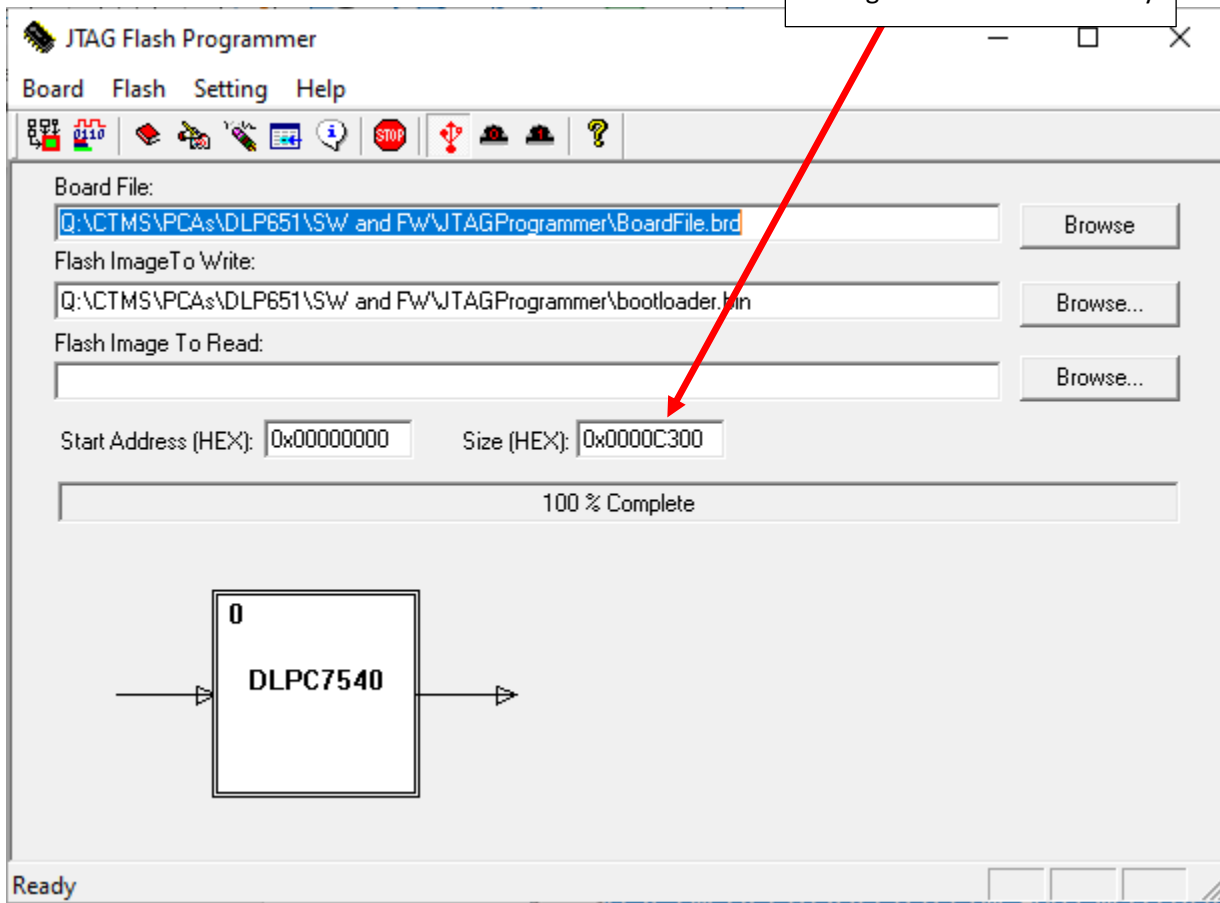
First, I erase the Flash because I am trying to simulate bringing up a board from scratch:



TI: Try setting the size to 0x80000

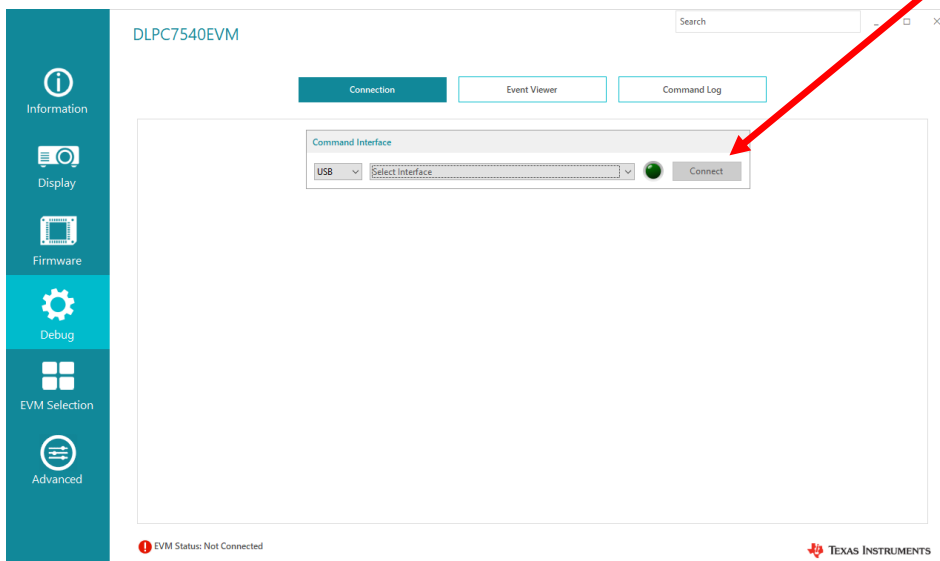


JTAG Programming of the Flash completes successfully.

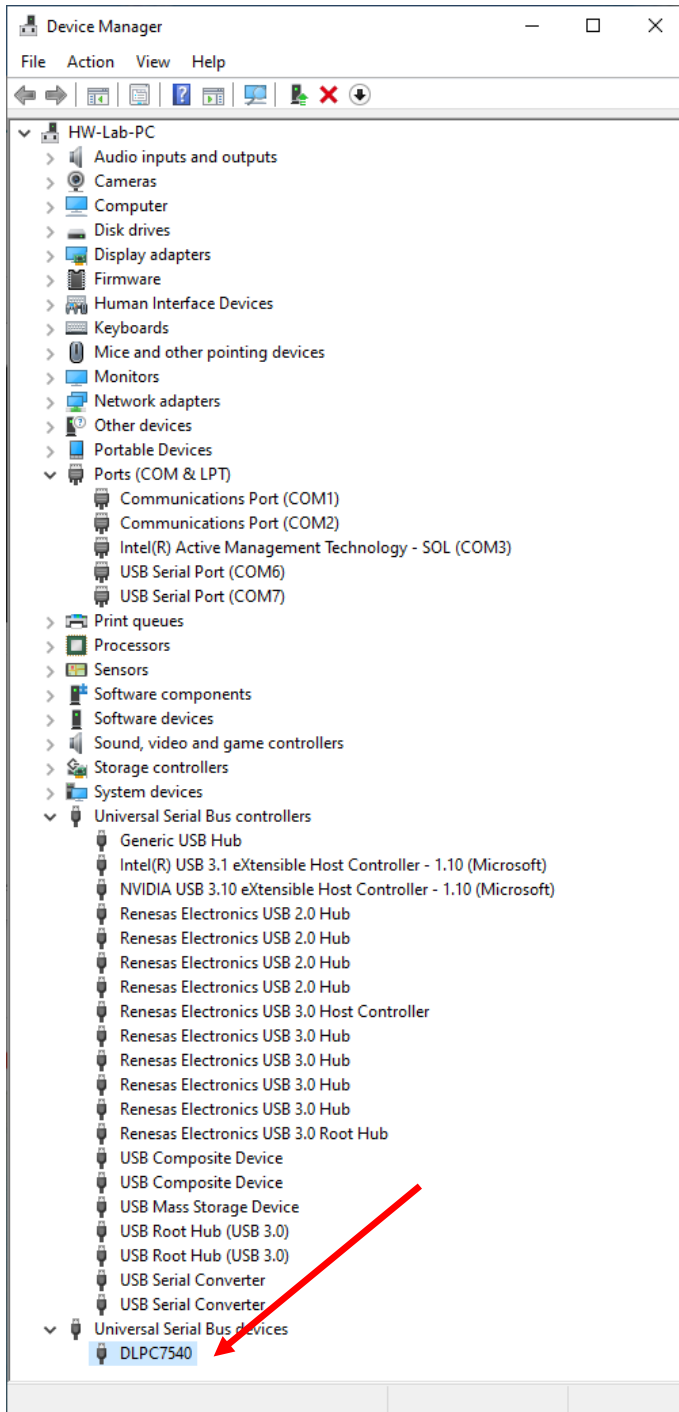


Then I power down and remove J9 and the JTAG Programmer.

With a USB cable connected, I power up, but I can't select USB because it is greyed out:

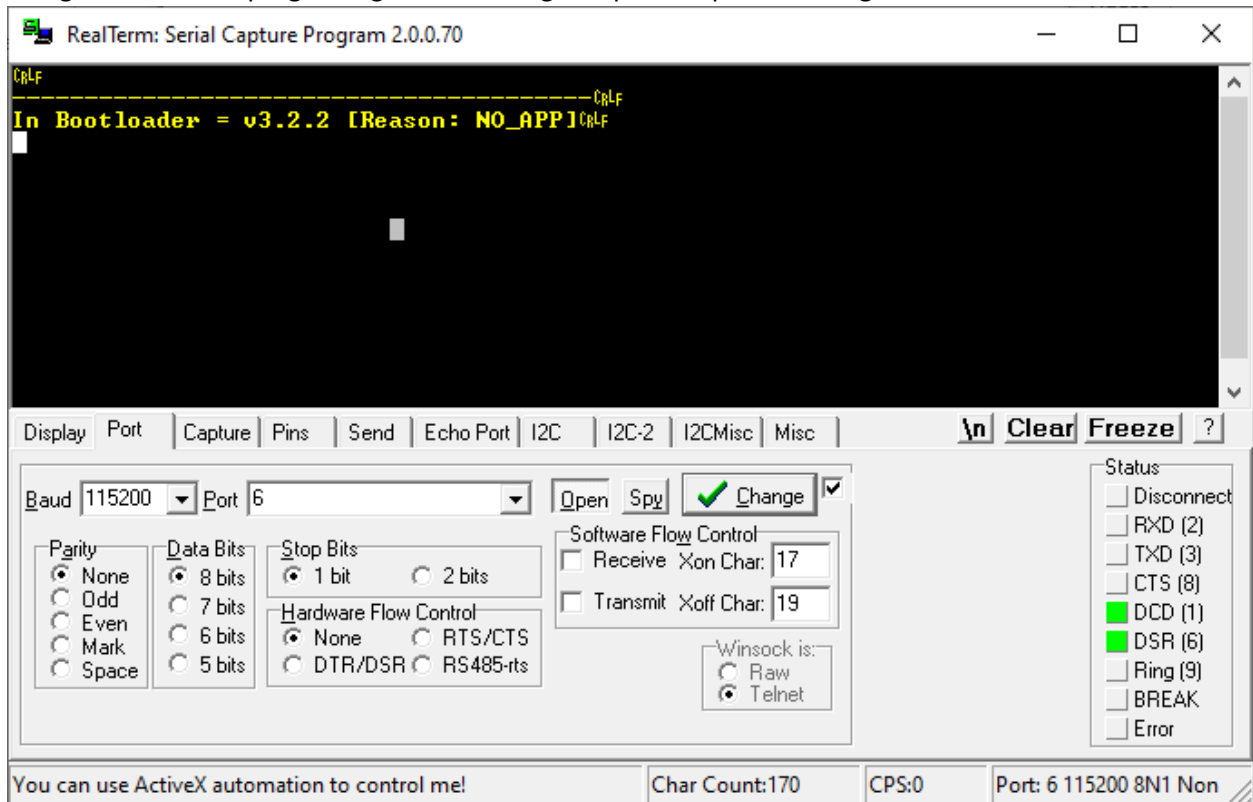


However, I do see the DLPC7540 in Device Manager:

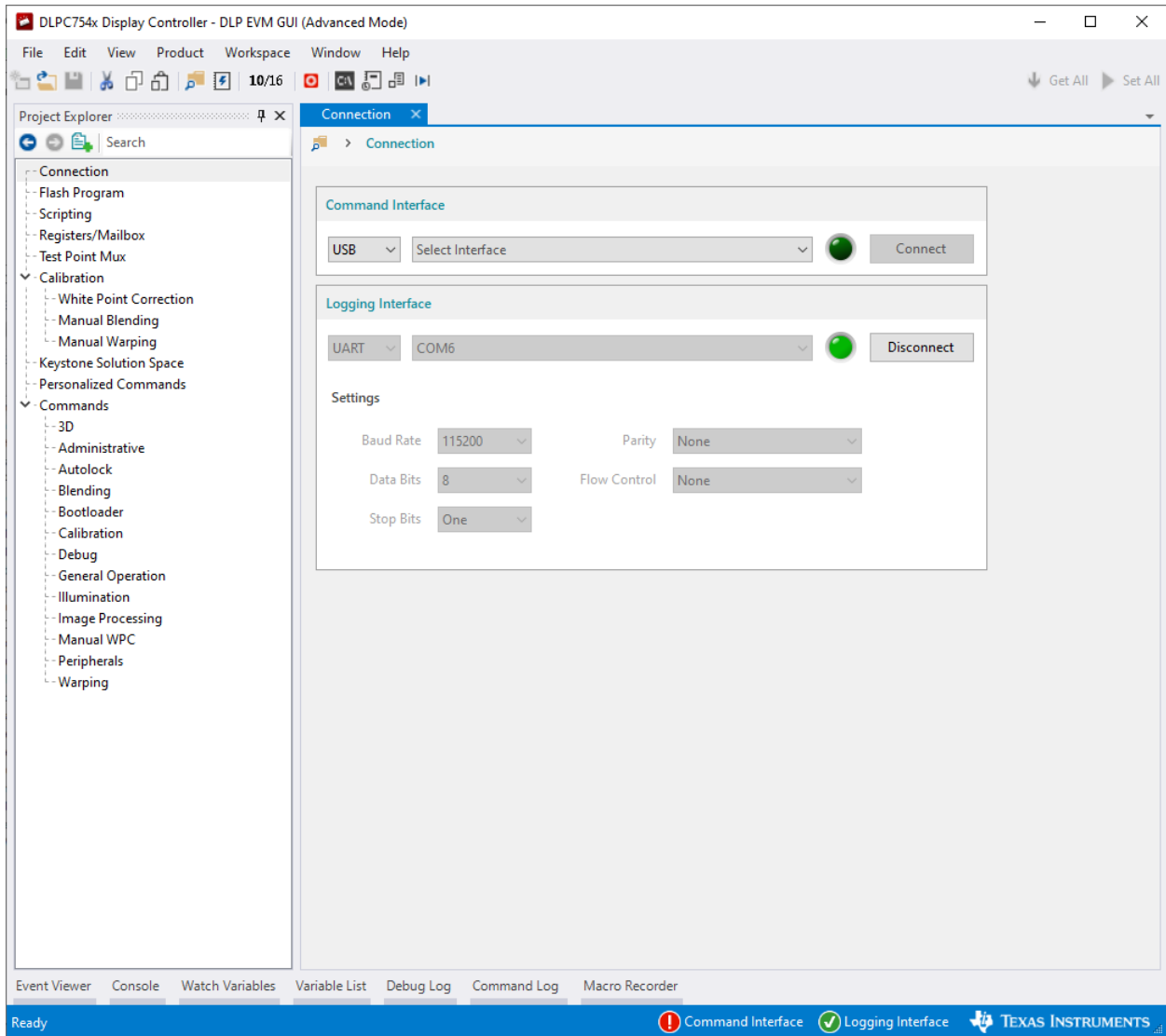


Debug Port:

Using the RealTerm program I get this message on power up but nothing else.



Closing RealTerm and using the DLPC GUI, it does show a connection to COM6:



However, there is something wrong with the connection:

The screenshot shows the DLPC754x Display Controller - DLP EVM GUI (Advanced Mode) interface. The Project Explorer on the left lists various categories, with 'Debug' selected. The main window displays the 'Debug' tab, which includes a 'Memory' section with 'Address' and 'Value' fields (both set to 0) and 'Set' and 'Get' buttons. Below this is the 'Write Memory Array' section with fields for 'Start Address' (0), 'Address Increment' (0), 'Access Width' (0x0 - Uint32), 'Number Of Words' (0), and 'Number Of Bytes Per Word' (1). A 'Data' field is also present. At the bottom, the Event Viewer shows a list of error messages:

Timestamp	Description
2/10/2023 10:38:08 AM	'Read Boot Hold Reason' command execution failed. Error Details: Please make sure that the system is connected, powered on, and the settings are correct.
2/10/2023 10:38:19 AM	'Read Memory' command execution failed. Error Details: Please make sure that the system is connected, powered on, and the settings are correct.
2/10/2023 10:38:26 AM	'Read Sfg Resolution' command execution failed. Error Details: Please make sure that the system is connected, powered on, and the settings are correct.
2/10/2023 10:41:16 AM	'Read Memory' command execution failed. Error Details: Please make sure that the system is connected, powered on, and the settings are correct.
2/10/2023 10:42:35 AM	'Read Memory' command execution failed. Error Details: Please make sure that the system is connected, powered on, and the settings are correct.

The status bar at the bottom indicates 'Ready' and shows the status of the 'Command Interface' (red exclamation mark) and 'Logging Interface' (green checkmark). The Texas Instruments logo is also visible.