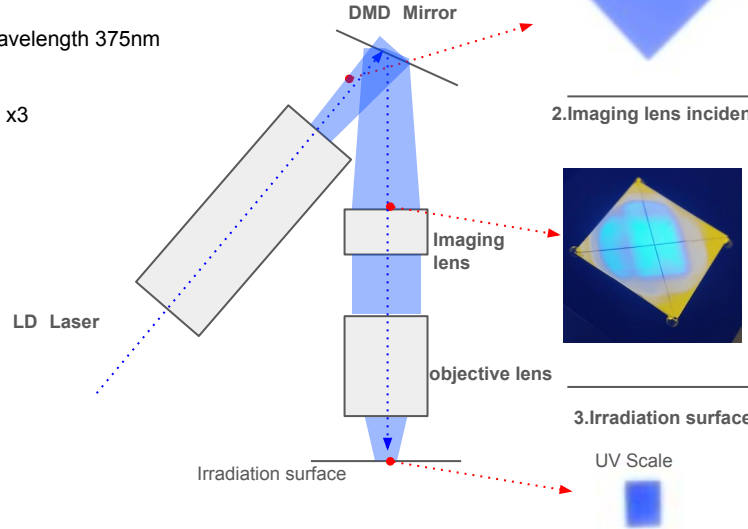


# Q 20240502

As shown on the right  
In front of the imaging lens after DMD reflection  
There is some unevenness as shown in the photo.  
The strength of the unevenness is 50% compared to the center.

conditions)

1. -LD light source Nichia LD wavelength 375nm
2. -DLP7000UV
3. -Imaging lens f170
4. -Objective lens magnification x3

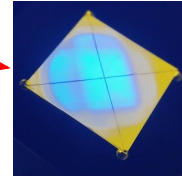


1.Before DMD mirror



Light distribution before DMD mirror  
Irradiation area 13mmx10mm  
Uniformity  $\pm 5\%$

2.Imaging lens incidence plane



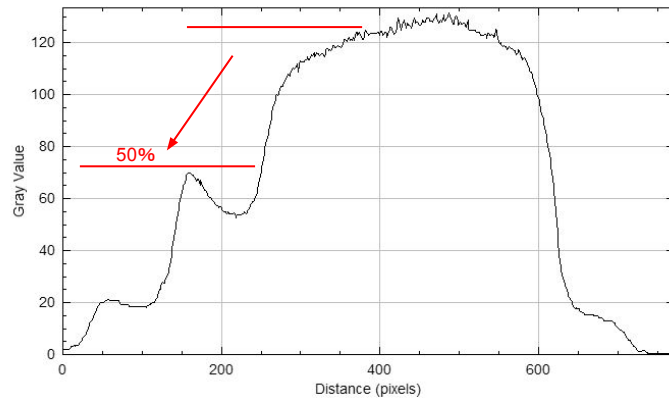
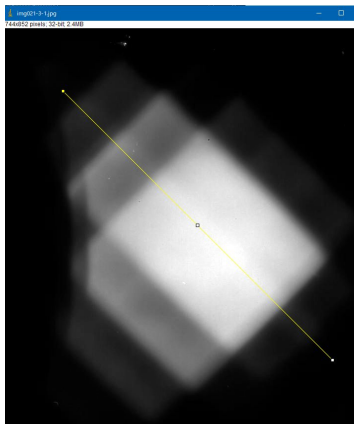
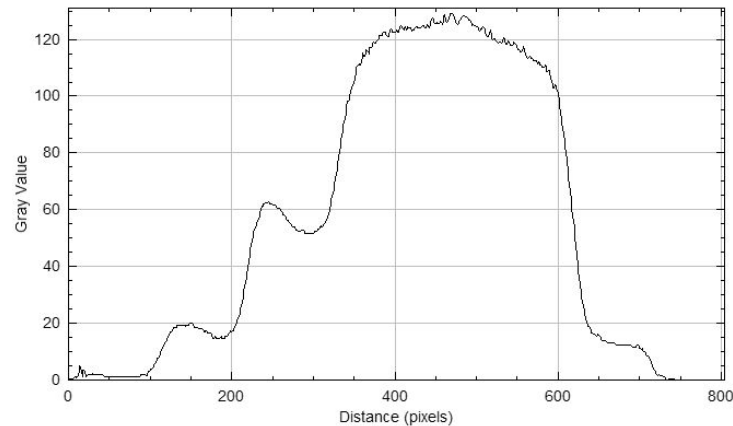
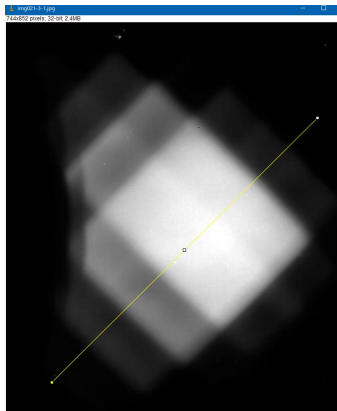
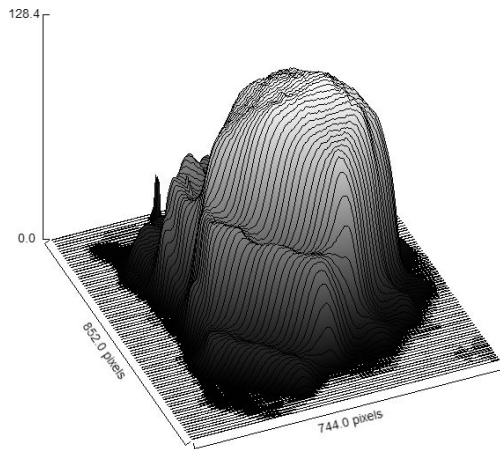
Unevenness occurs in front of the imaging lens.  
The intensity of the unevenness is 50% of the median.  
Is it diffracted light?

3.Irradiation surface

UV Scale



## 2.Imaging lens incidence plane



# View of the imaging lens entrance surface when the mirror is turned on and off

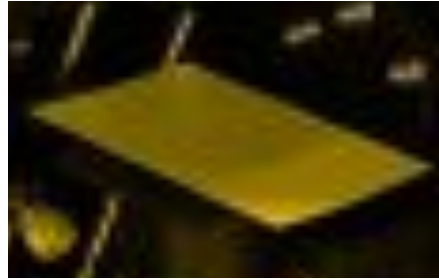
Photographs was taken under 3 conditions.

Photo

DMD Mirror  
All On



DMD Mirror  
All Off



DMD mirror  
Only the center 1mm  
corner On

