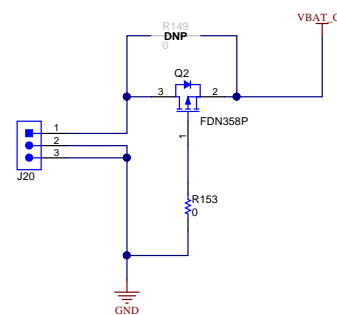
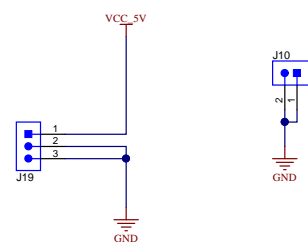
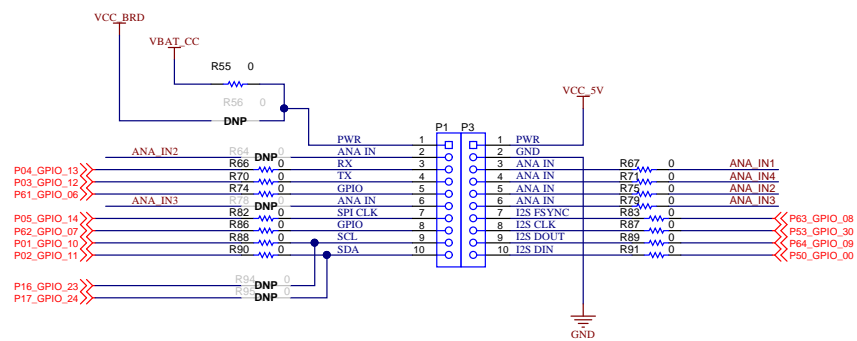


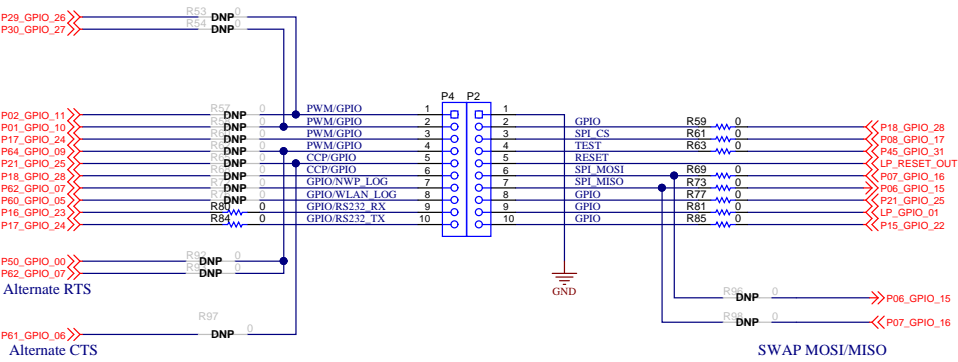
Circuit diagram of a TPS62162DSGR buck converter. The input is VBUS_USB1 (5V) connected to VIN (pin 2) through a J26 connector. EN (pin 3) is connected to VCC_5V. PG (pin 8) is connected to GND through a 100k resistor (R145). SW (pin 7) is connected to an inductor L3 (2.2uH) and then to the output. VOS (pin 6) is connected to the output. FB (pin 5) is connected to the output. EP (pin 9) is connected to GND. AGND (pin 4) and PGND (pin 1) are connected to GND. The output is connected to C42 (22uF) and then to the load. C43 (10uF) is connected to VIN and GND. A note says "CHECK LAYOUT GUIDE FROM DATASHEET".

[illegible]

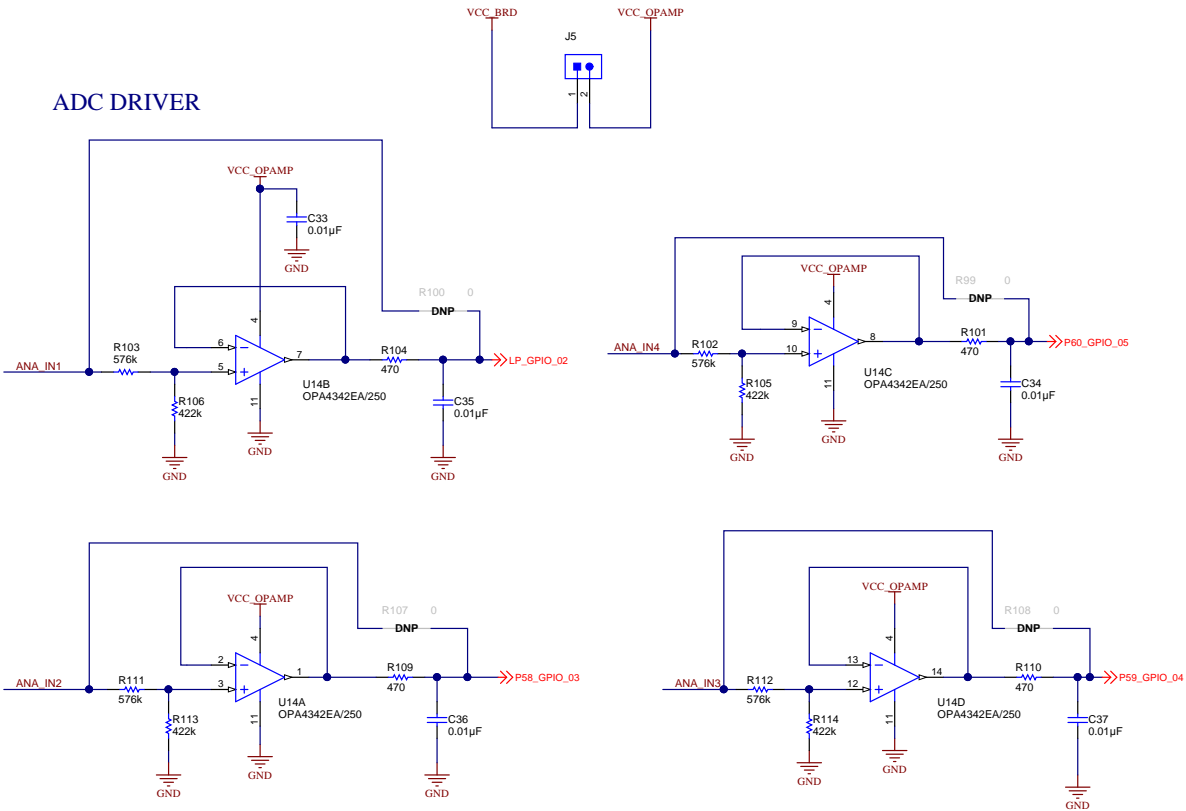
BOOSTER PACK INTERFACE

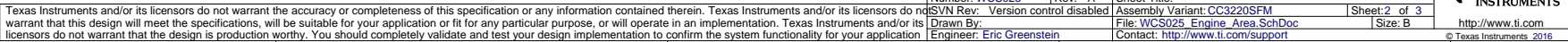


For Antenna diversity



ADC DRIVER





EMULATION CIRCUIT

