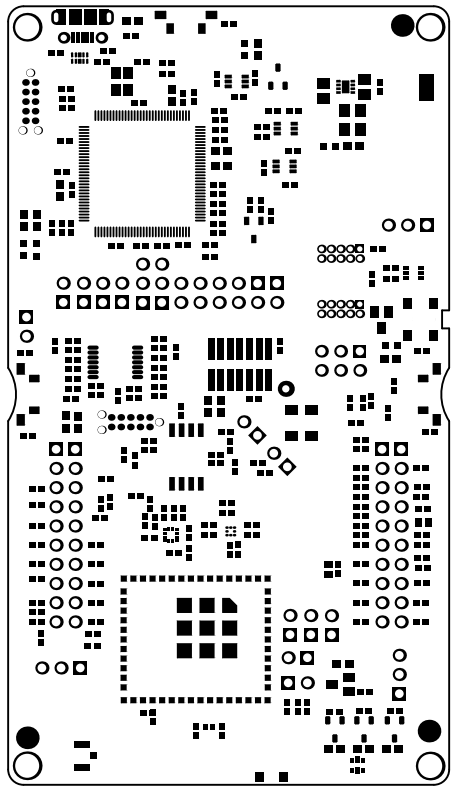
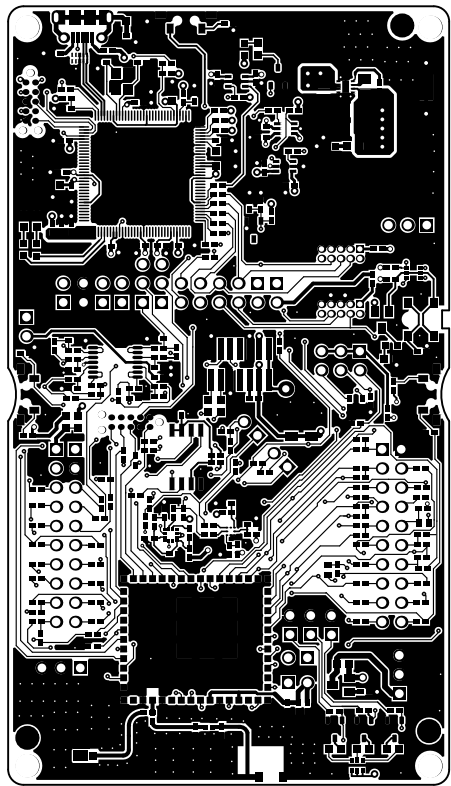


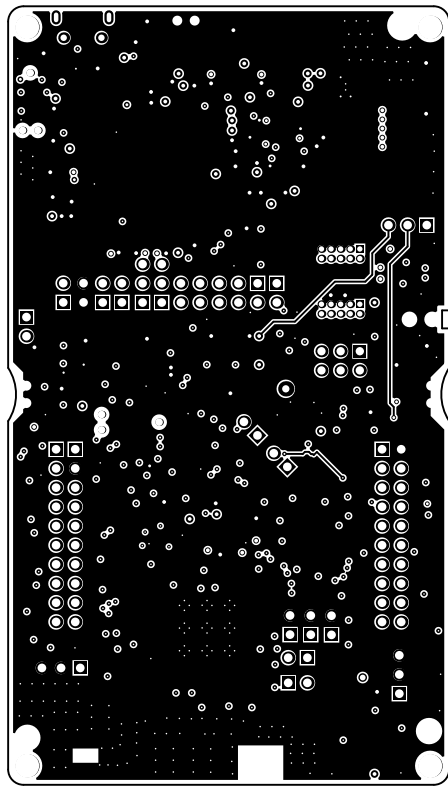
ALL ARTWORK VIEWED FROM TOP SIDE	BOARD #: WCS025	REV: A	SUN REV: Not In VersionControl
LAYER NAME = <b>61LXSCREEN TOP</b>			
PLOT NAME = Top Overlay	GENERATED : 5/14/2017 6:39:27 PM		TEXAS INSTRUMENTS



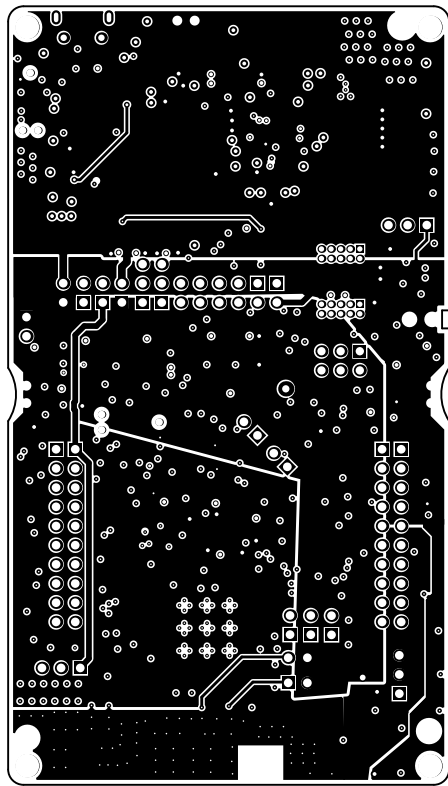
ALL ARTWORK VIEWED FROM TOP SIDE	BOARD #: WCS025	REV: A	SUN REV: Not In VersionControl
LAYER NAME = Top Solder			
PLOT NAME = Top Solder Mask	GENERATED : 5/14/2017 6:39:28 PM	TEXAS INSTRUMENTS	



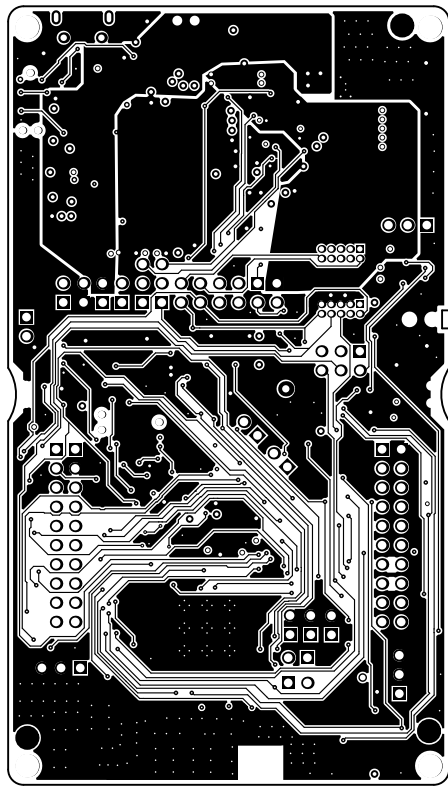
ALL ARTWORK VIEWED FROM TOP SIDE	BOARD #: WCS025	REV: A	SUN REV: Not In VersionControl
LAYER NAME = TOP			
PLOT NAME = Top Layer	GENERATED : 5/14/2017 6:39:28 PM	TEXAS INSTRUMENTS	



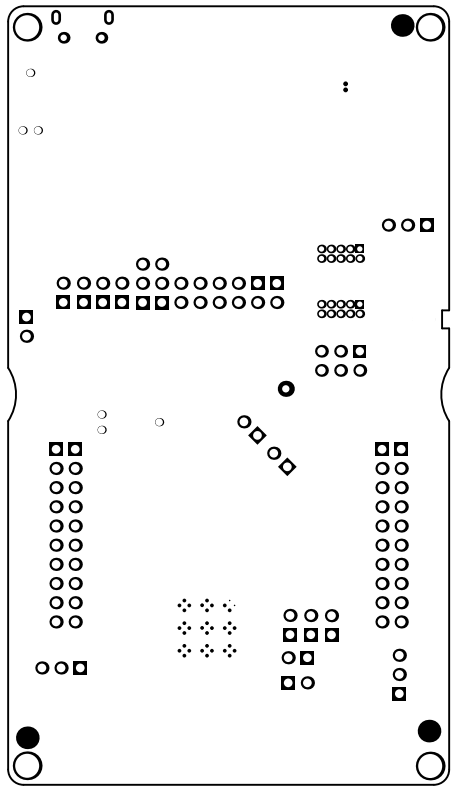
ALL ARTWORK VIEWED FROM TOP SIDE	BOARD #: WCS025	REV: A	SUN REV: Not In VersionControl
LAYER NAME = GND			
PLOT NAME = Signal Layer 1	GENERATED : 5/14/2017 6:39:28 PM	TEXAS INSTRUMENTS	



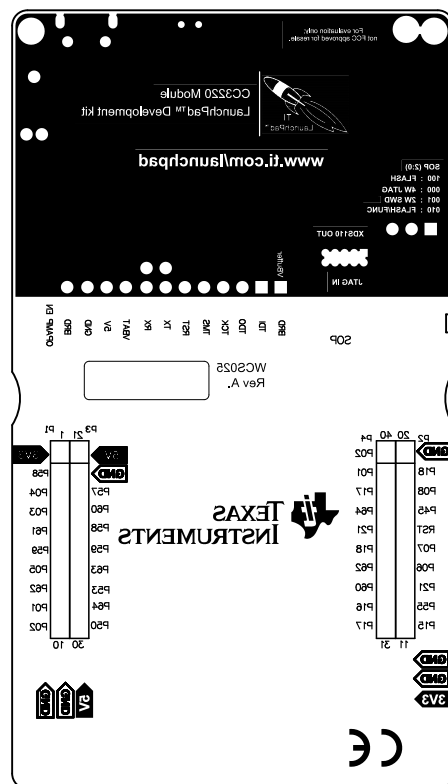
ALL ARTWORK VIEWED FROM TOP SIDE	BOARD #: WCS025	REV: A	SUN REV: Not In VersionControl
LAYER NAME = PWR			
PLOT NAME = Signal Layer 2	GENERATED : 5/14/2017 6:39:28 PM	TEXAS INSTRUMENTS	



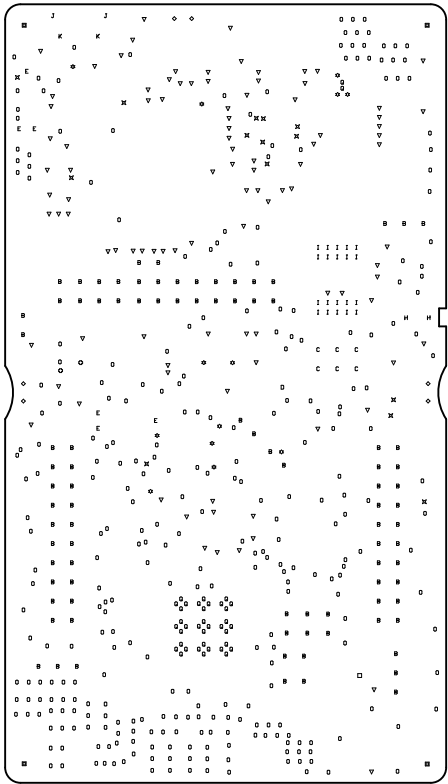
ALL ARTWORK VIEWED FROM TOP SIDE	BOARD #: WCS025	REV: A	SUN REV: Not In VersionControl
LAYER NAME = BOTTOM			
PLOT NAME = Bottom Layer	GENERATED : 5/14/2017 6:39:28 PM	TEXAS INSTRUMENTS	



ALL ARTWORK VIEWED FROM TOP SIDE	BOARD #: WCS025	REV: A	SUN REV: Not In VersionControl
LAYER NAME = Bottom Solder			
PLOT NAME = Bottom Solder Mask	GENERATED : 5/14/2017 6:39:28 PM	TEXAS INSTRUMENTS	



ALL ARTWORK VIEWED FROM TOP SIDE	BOARD #: WCS025	REV: A	SUN REV: Not In VersionControl
LAYER NAME = SILKSCREEN BOTTOM			
PLOT NAME = Bottom Overlay	GENERATED : 5/14/2017 6:39:28 PM		TEXAS INSTRUMENTS

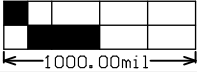


Symbol	Quantity	Finished Hole Size	Plated	Hole Type	Drill Layer Pair	Hole Tolerance	Hole Length
◇	6	35.43mil (0.900mm)	NPTH	Round	TOP - BOTTOM		-
E	6	39.00mil (0.991mm)	NPTH	Round	TOP - BOTTOM		-
H	2	39.37mil (1.000mm)	NPTH	Round	TOP - BOTTOM		-
■	4	125.00mil (3.175mm)	NPTH	Round	TOP - BOTTOM		-
Q	38	7.87mil (0.200mm)	PTH	Round	TOP - BOTTOM		-
O	305	8.00mil (0.203mm)	PTH	Round	TOP - BOTTOM		-
⊗	13	10.00mil (0.254mm)	PTH	Round	TOP - BOTTOM		-
⊗	2	12.00mil (0.305mm)	PTH	Round	TOP - BOTTOM		-
X	14	15.00mil (0.381mm)	PTH	Round	TOP - BOTTOM		-
▽	101	20.00mil (0.508mm)	PTH	Round	TOP - BOTTOM		-
I	20	27.95mil (0.710mm)	PTH	Round	TOP - BOTTOM		-
□	1	30.00mil (0.762mm)	PTH	Round	TOP - BOTTOM		-
K	2	33.46mil (0.850mm)	PTH	Round	TOP - BOTTOM		-
D	1	37.99mil (0.965mm)	PTH	Round	TOP - BOTTOM		-
C	6	43.31mil (1.100mm)	PTH	Round	TOP - BOTTOM		-
B	91	45.28mil (1.150mm)	PTH	Round	TOP - BOTTOM		-
J	2	23.62mil (0.600mm)	PTH	Slot	TOP - BOTTOM		51.18mil (1.300mm)
	614 Total						

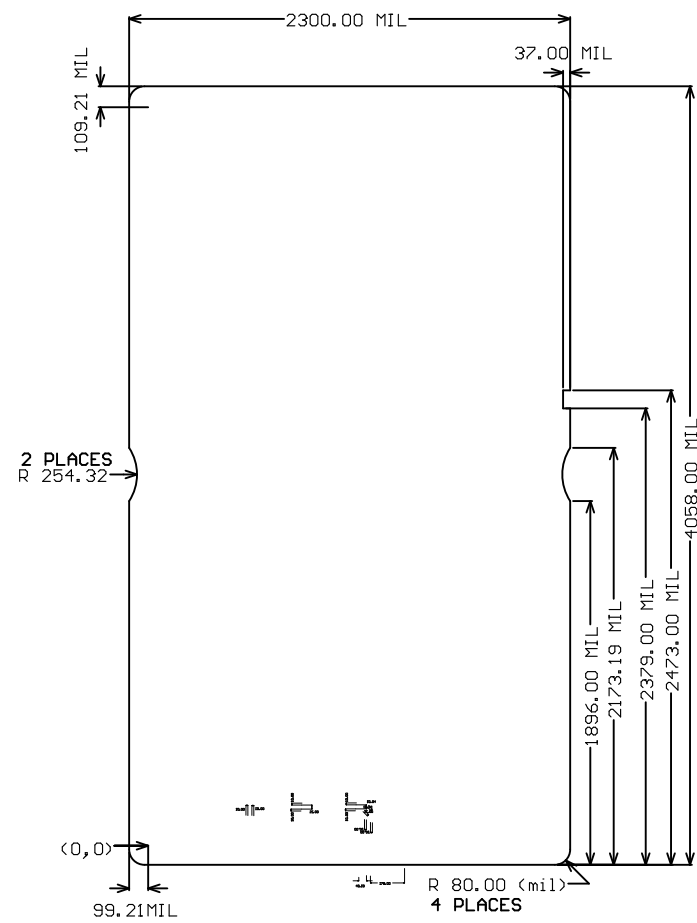
Slot definitions : Routed Path Length = Calculated from tool start centre position to tool end centre position.  
Hole Length = Routed Path Length + Tool Size = Slot length as defined in the PCB layout

ADDITIONAL FAB NOTES

ALL OTHER DRILL TOLERANCE FOR PLATED +/-3 MIL AND NPTH +/-2 MIL  
(UNLESS OTHERWISE SPECIFIED)



ALL ARTWORK VIEWED FROM TOP SIDE	BOARD #: WCS025	REV: A	SUN REV: Not In VersionControl
LAYER NAME = Drill Drawing			
PLOT NAME = Drill Drawing	GENERATED : 5/14/2017 6:39:28 PM	TEXAS INSTRUMENTS	



ALL ARTWORK VIEWED FROM TOP SIDE	BOARD #: WCS025	REV: A	SUN REV: Not In VersionControl
LAYER NAME =			
PLOT NAME = Board Dimensions	GENERATED : 5/14/2017 6:39:29 PM	TEXAS INSTRUMENTS	