

HCITester Tool

This user's guide describes how to use the HCITester software tool with TI's wireless *Bluetooth*® devices (BL6450, CC256x, WL127x, WL128x, and WL18xx), including how to send and receive HCI scripts using HCI commands and events.

Contents

1	Requirements	3
1.1	System Requirements	3
1.2	Configuration Requirements	3
2	Installation	3
3	Post Installation Requirements	4
3.1	Changing the XML File	4
3.2	Updating the Scripts Pane	6
4	HCITester Features	6
4.1	Port Connection Options	6
4.2	Main Interface Screen Overview	8
4.3	Executing Scripts or Commands	9
4.4	ToolBar and Main Menus	11
4.5	Command Library Pane	16
4.6	Values Pane	18
4.7	My Shortcuts Pane	19
4.8	Script Editor Pane	19
4.9	Trace Pane	20
5	Setup and Configuration Using the Options Window	22
5.1	Network Configuration Option	22
5.2	Editor Option	23
5.3	Trace Option	23
5.4	Log File Configuration Options	24
Appendix A	List of Shortcuts	25
Appendix B	Terms and Abbreviations	26

List of Figures

1	HCITester Icon	3
2	HCITester Working Window	4
3	Command Library Pane	4
4	Changing the XML File	5
5	Scripts Pane	6
6	Configuration of the Port Connection	7
7	HCITester Main Interface Window	8
8	Searching For a Command in the Command Library	10
9	Executing a Single Command from the Command Library	10
10	Execution Status Indicators	11

WiLink is a trademark of Texas Instruments.
Bluetooth is a registered trademark of Bluetooth SIG, Inc.
 FTDI Chip is a trademark of Future Technology Devices; International Limited.
 Windows is a registered trademark of Microsoft Corporation.
 All other trademarks are the property of their respective owners.

11	HCITester Menu Bar and Toolbar	11
12	File Command Drop-Down Menu	13
13	Edit Command Drop-Down Menu	14
14	View Command Drop-Down Menu	15
15	Window Menu Drop-Down Menu	16
16	Help Command Drop-Down Menu	16
17	Command Library Pane	17
18	Visible Categories Dialog Box	18
19	Values Pane	18
20	My Shortcuts Pane	19
21	Script Editor	20
22	Trace Pane	20
23	Selecting Raw HCI Data to Trace on the View Menu	21
24	Network Configuration Option	22
25	Status Bar Indicator for Network Configuration	22
26	Editor Configuration	23
27	Trace Configuration Option	23
28	Log File Configuration Options	24

List of Tables

1	XML File Changing Icon Functions	5
2	Scripts Pane Icon Functions	6
3	Flow Control Options	7
4	Sleep Type Functions	8
5	Execution Status Indicators	11
6	HCITester Menu Functions	12
7	File Command Drop-Down Menu Functions	13
8	Edit Command Drop-Down Menu Functions	14
9	View Command Drop-Down Menu Functions	15
10	Window Command Drop-Down Menu Functions	16
11	Command Library Icon Functions	17
12	Values Pane Command Functions	18
13	Trace Pane Icon Functions	21
14	Log Configuration Options	24
15	Available HCITester Shortcuts	25
16	Terms and Abbreviations	26

1 Requirements

1.1 System Requirements

The HCITester tool requires the following components:

- Minimum requirements: PC running Pentium II
- Operating systems: Windows® 2000, Windows XP, Windows 7
- Access to *Bluetooth* HCI pins
- Access to *Bluetooth* HCI UART lines
- For *Bluetooth* TX validation, standard RF equipment (such as a power meter, spectrum analyzer, vector signal analyzer, or a combined tester such as Litepoint™ IQxel™) for TX output power, *Bluetooth* mask, and DEVM measurements.
- For *Bluetooth* RX validation, a vector signal generator to generate *Bluetooth* packets for the IC to analyze.

Debug and calibration tools for WLAN and *Bluetooth*® require four UART ports. The most efficient way to drive these ports to the PC is to use a UART-to-USB converter (not included in the wireless tools package). TI recommends using the [WL18XXCOM82SDMMC](#) adapter with the TI [WL1837MODCOM8I](#) module or the [WL1835MODCOM8B](#) module on the COM8 board.

NOTE: Multiple UART-to-USB adapters are available on the market, such as the [FTDI Chip™ development modules](#).

1.2 Configuration Requirements

The HCITester tool for the [WiLink™ 8 TI Bluetooth release](#) requires the latest versions of the following configuration files:

- [XML file](#)
- [Bluetooth script](#)

NOTE: The XML file and the *Bluetooth* script support all of the WiLink family and are based on the BTS naming format; for information on the WL128x and prior releases, follow the [README file](#).

The installation files are in the directory named *Wireless Tools* at the installation path configured during installation. By default, the files are at the following path:

C:\Program Files (x86)\Texas Instruments\Wireless Tools

NOTE: Throughout this document, the directory in which the installation files reside is referred to as *Installation directory*.

2 Installation

The HCITester application is part of the TI wireless tools package release. When the wireless tools package is installed, the HCITester icon is created in the Texas Instrument\Wireless Tools folder at Start→Programs and on the desktop (see [Figure 1](#)).



Figure 1. HCITester Icon

To start the HCITester, double-click the HCITester icon. The software initializes and displays the HCITester working window (see [Figure 2](#)).

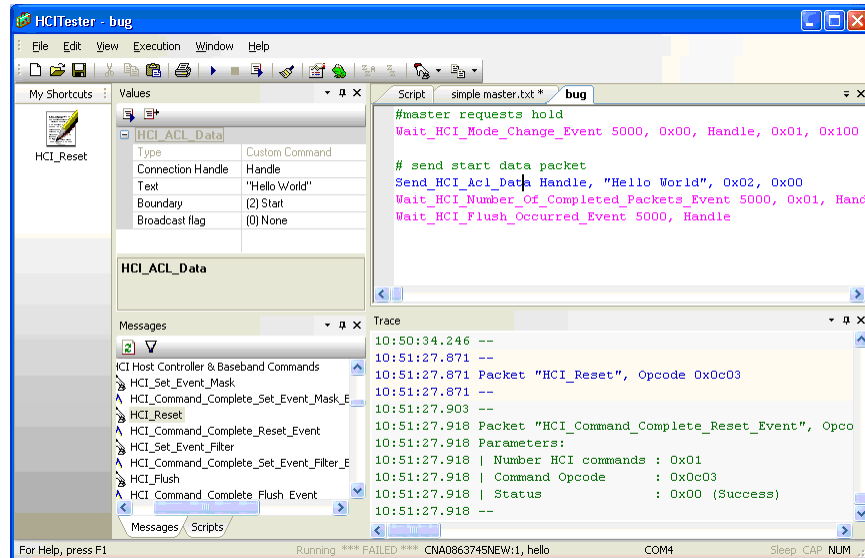


Figure 2. HCITester Working Window

3 Post Installation Requirements

3.1 Changing the XML File

TI *Bluetooth* devices require specific XML files. To change the XML file to match your specific TI *Bluetooth* device, perform the following steps:

1. From the toolbar, open the View menu and select Command Library. The Command Library pane appears (see [Figure 3](#)).

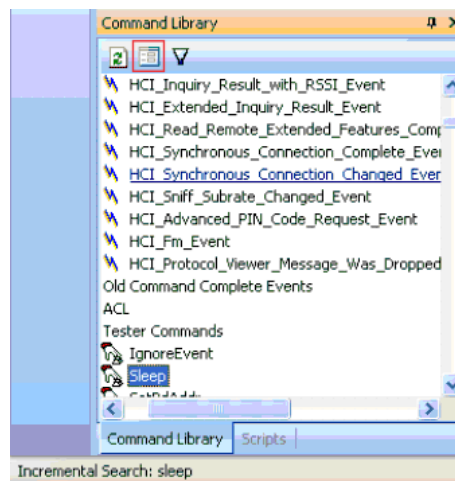


Figure 3. Command Library Pane

2. To open the Change Library Files dialog box, click the Change Library button (for more information on the Change Library button, see [Table 11](#)). The Change Library Files dialog box displays (see [Figure 4](#)).

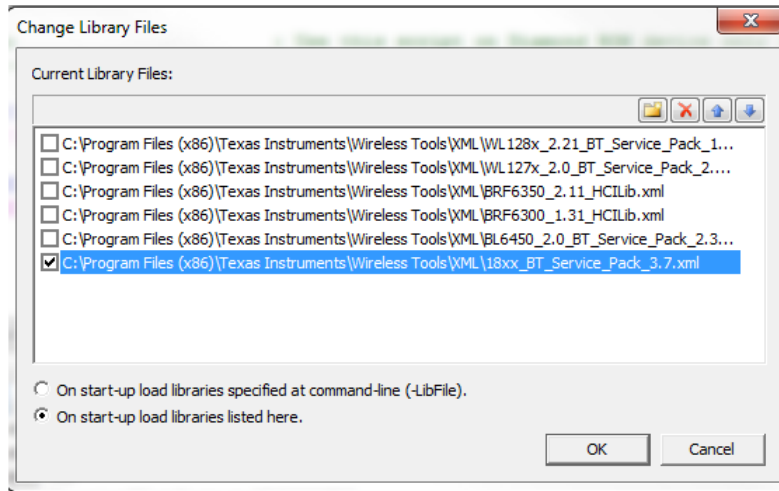







Figure 4. Changing the XML File

3. Select the appropriate XML file for your device. and click OK.

NOTE: Select only one XML file at a time.

Table 4 describes the XML file changing functions.

Table 1. XML File Changing Icon Functions

Icon	Function
	Create a new file
	Browse to the location of a saved file
	Delete a file from the list
	Move a file up in the list
	Move a file down in the list

3.2 Updating the Scripts Pane

The Scripts pane contains all the script files from the chosen root file. [Figure 5](#) shows the Scripts pane.

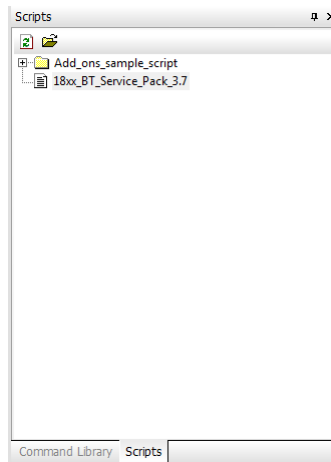



Figure 5. Scripts Pane

To search the Scripts pane, use the incremental search function in the following ways:

- To locate the desired script, type a partial text string.
- To search forward, press the F3 function key.
- To search backward from the present location, press Shift+F3.

[Table 2](#) describes the Scripts pane functions.

Table 2. Scripts Pane Icon Functions

Icon	Function
	Refresh the contents of the Script pane

The Scripts pane lists all available scripts. You can choose any script to be loaded, executed, and edited. By default, the list of HCITester scripts is empty after software installation.

To update the pane, perform the following steps:

1. Press Open on the scripts pane.
2. Select the scripts folder.

4 HCITester Features

This section summarizes the features of the HCITester software.

4.1 Port Connection Options

The port connection Options dialog box enables configuration of the specific type of communication between the HCITester and the device. [Figure 6](#) shows the port connection Options dialog box.

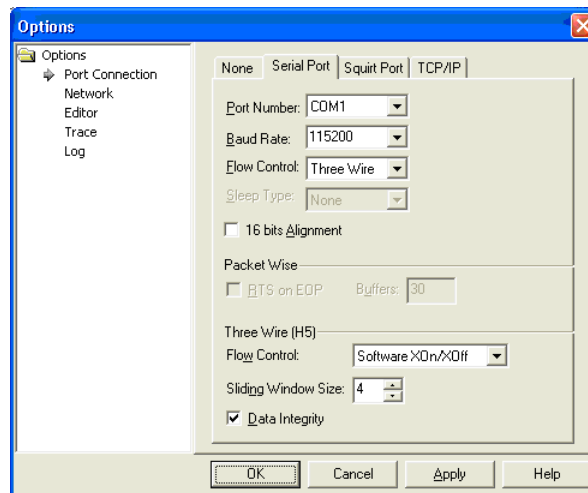


Figure 6. Configuration of the Port Connection

The port connection Options dialog box includes the following tabs:

- **None:** No connection is established between the HCITester software and the device.
- **Serial:** Connects a serial port connection with the device. This connection supports various types of flow control and power mode (sleep) controls.
- **Squirt:** Connects to the device using a squirt serial connection in parallel with other applications using a squirt port (such as Logger)
- **TCP/IP:** Connects to the device over all types of TCP/IP protocol (synchronized or not, servers, or clients)

NOTE: When selecting serial or squirt port connections, remember to select the port number, desired baud rate, flow control, and sleep type.

The default device baud rate is 115200 but can be configured up to 3MB using the HCI switch baud rate vendor-specific (VS) command. For more information, see the *Bluetooth (WL18xx and WL18xxQ) Vendor-Specific HCI Commands User's Guide* ([SWRU303](#)).

4.1.1 Flow Control Options

Table 3 summarizes the flow control options.

Table 3. Flow Control Options

Option	Result
None	Flow control is not used.
Hardware	CTS/RTS flow control
Packet Wise	Reserved
Negotiate	Reserved
Segmentation	Reserved
Three Wire	Software flow control (Xon/Xoff)

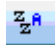
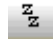
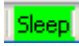
4.1.2 Sleep Type Options

HCITester supports three sleep protocols:

- HCILL
- Palau
- ThreeWire (set automatically if ThreeWire flow control is selected)

Table 4 describes the sleep type functions.

Table 4. Sleep Type Functions

Icon	Function
	Auto Control HCITester automatically controls the power mode of the device. The software is set to sleep on a timeout and awake if required. The <i>SetAutoSuspend</i> script command controls this feature. The <i>SetSuspendTimeout</i> command sets the idle timeout value. The default value is 2000 ms.
	Manual Control The user sets the power mode manually. Click to set the device in sleep mode or to awake from sleep mode. The <i>SetAutoState</i> command is a script command that controls this feature.
	Status Status bar indicator showing when the host (that is, the HCITester) is in sleep mode.

4.2 Main Interface Screen Overview

Figure 7 shows the names of the areas and functions that make up the HCITester main interface window

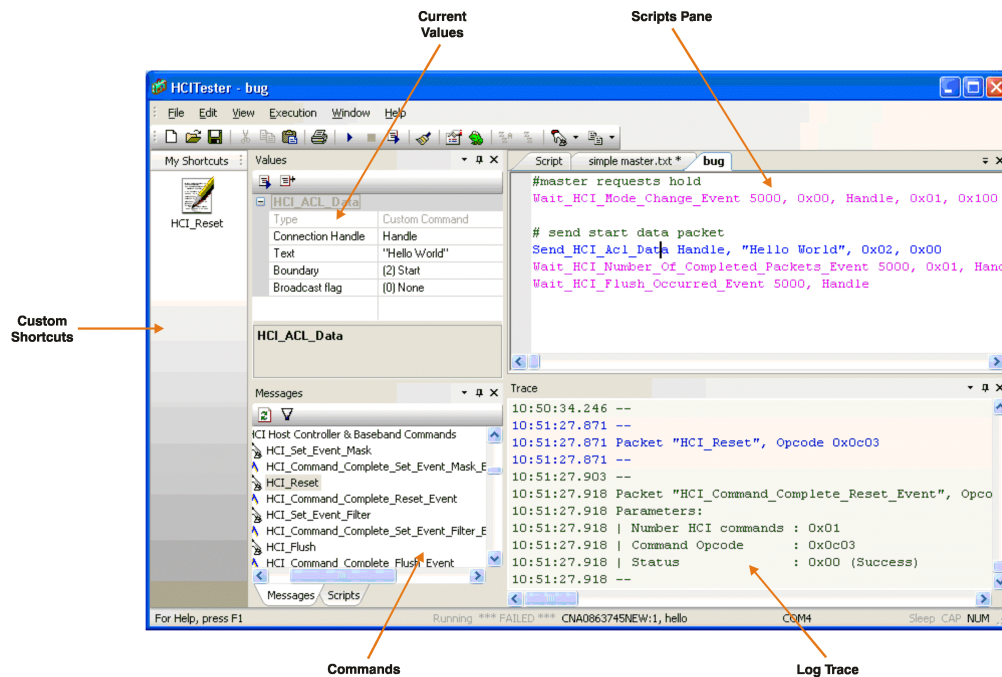


Figure 7. HCITester Main Interface Window

4.3 Executing Scripts or Commands

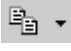
4.3.1 Executing Scripts

Executing a script involves three steps:

- Loading the script
- Editing the script (as required)
- Running the script

4.3.1.1 Loading the Script

A script can be loaded in the following ways:


- Select *Open Script...* from the File menu.
- To select a previously used script, click the Load icon () on the toolbar button.
- Double-click the requested script in the scripts pane.

4.3.1.2 Editing a Script

To edit a script, select a line of the script in the Edit script View window and change the values. Alternatively, edit scripts in the values in the Values pane. This option automatically updates the text in the script.

The Script Editor functions similarly to any other text editor. To copy, cut, and paste lines in the script or from one script to the other, right-click and select the desired option from the pop-up menu. The basic Control (Ctrl) commands to copy (Ctrl+C), cut (Ctrl+X), and paste (Ctrl+V) selected text are also available.

4.3.1.3 Executing a Script

After loading to the script editor pane, a script can be executed by clicking the Start icon () on the toolbar or pressing the F5 button on the keyboard.

To stop a running script, click the Stop button () on the toolbar or press F5 again.


The Trace Port view displays the output of the running script.

4.3.2 Executing Commands

4.3.2.1 Searching for a Specific Command in the Command Library

To search for a specific command in the Command Library, follow these steps [Figure 8](#):

1. Place the cursor on any command in the Command Library.
2. Type a key phrase from the command in the Incremental Search field.
3. Press F3 to scroll between all the commands that contain the phrase within them (SHIFT+F3 searches backwards).

Alternatively, use the toolbar button  to select one of the previously used commands for execution.

[Figure 8](#) shows a search for the word *sleep*.

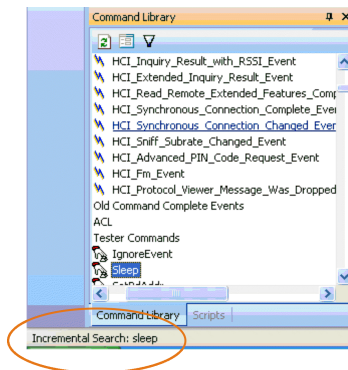


Figure 8. Searching For a Command in the Command Library

4.3.2.2 Executing a Single Command

Select the desired command in the Command Library pane. Right-click the desired command and select the desired option from the pop-up menu: Execute; Add the command to a currently active script; or Add the command to your list of shortcuts.

Figure 9 shows an example of this selection.

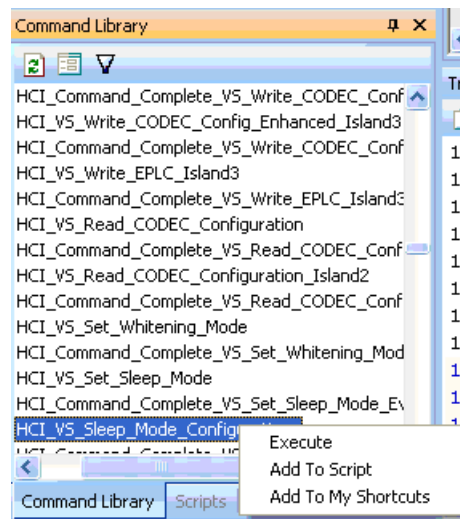






Figure 9. Executing a Single Command from the Command Library

Double-clicking a command line in the Command Library Pane also executes the command. A third way to execute a command is to press the  icon (as explained in [Section 4.6, Values Pane](#)).

4.3.3 Execution Shortcut-Keys and Status Indicators

There are three shortcut keys when working with scripts.

-  (F5): Execute current script
-  (F5): Stop running current script
-  (Ctrl+F5): Execute only current selection:
 - Selected script text
 - Current line (if no text selected)

- Current command in Values pane

A complete list of shortcuts is provided in [Appendix A, List of Shortcuts](#).

As [Figure 10](#) shows, there are also four possible execution status indicators displayed in the status bar.

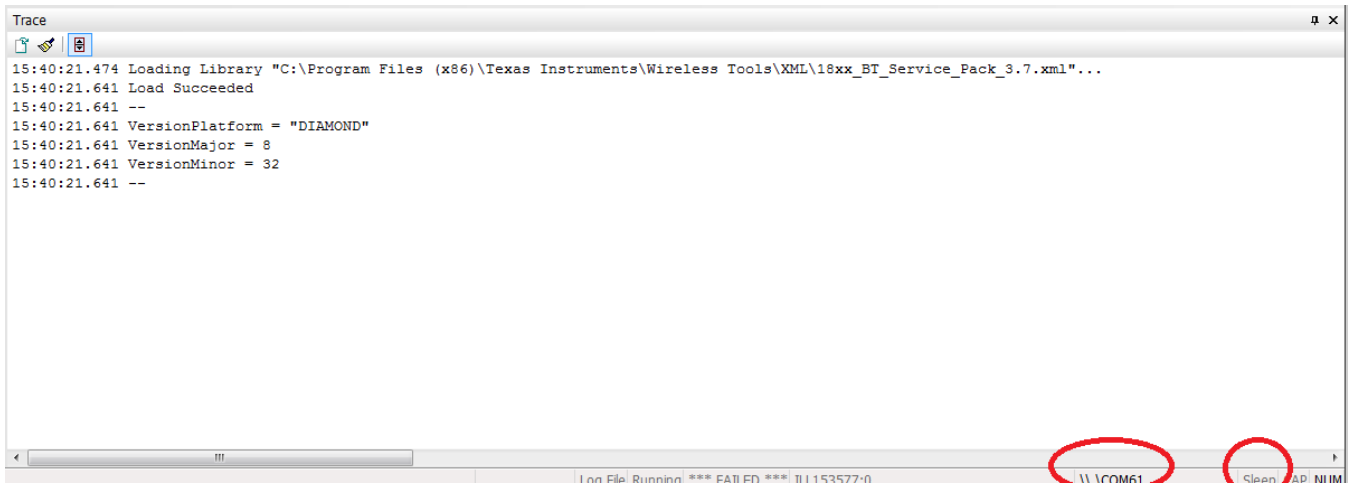


Figure 10. Execution Status Indicators

[Table 5](#) summarizes the execution status indicators.

Table 5. Execution Status Indicators

Icon		Description
	Running	Normal indicator; the script or command is running
	Failed	Shows that the previous script or command failed
	Port	Indicates the COM port that is in use
	Sleep	Sleep indicator

4.4 ToolBar and Main Menus

4.4.1 Menu Bar and Toolbar

[Figure 11](#) shows the menu bar and toolbar. [Table 6](#) summarizes the program commands and functions available using the toolbar icons.

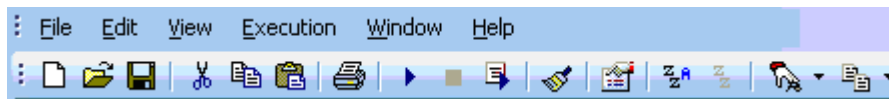
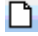


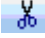









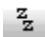

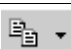


Figure 11. HCITester Menu Bar and Toolbar

Table 6. HCITester Menu Functions

Icon	Function
	Open a new script in the Scripts pane
	Open a new screen to browse through files on the PC.
	Save the active script
	Cut selected text to the clipboard
	Copy selected text to the clipboard
	Paste selected text from the clipboard to the present cursor location
	Print the active script or selection
	Execute the active script
	Stop executing the active script
	Execute a selected part of the active script
	Clear the Trace pane display
	Configure various display and command options
	Configure the HCITester software to automatically wake up the device from sleep mode
	Put the device into sleep mode
	Execute the most recent command
	Load and execute the most recent script

4.4.2 Drop-Down Menus

4.4.2.1 File Commands

Figure 12 shows the File drop-down menu.

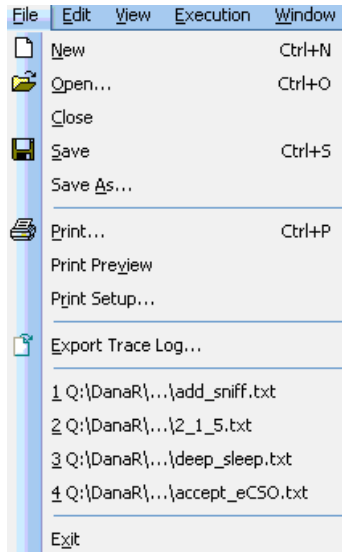


Figure 12. File Command Drop-Down Menu

Table 7 summarizes the File menu command functions.

Table 7. File Command Drop-Down Menu Functions

Command	Shortcut	Function
New	Ctrl+N	Open a new file (script)
Open script	Ctrl+O	Open an existing (saved) script. This option opens a new screen to browse through files on the PC
Close		Close a currently open script
Save	Ctrl+S	Save the currently active script
Save As		Save the currently active script under a different name. This option opens a new screen from which to enter a new file name and select a location to save the file.
Print	Ctrl+P	Print the currently active script
Print Preview		Preview the file to be printed
Print Setup		Open a new screen to configure printing options on the PC
Export Trace Log		Export the Trace log as an HTML file. This option opens a new screen from which to enter a new file name and select a location to export the file.
Exit		Exit the HCITester application

4.4.2.2 Edit Commands

The Edit menu contains actions that relate to editing scripts. [Figure 13](#) shows the Edit drop-down menu.

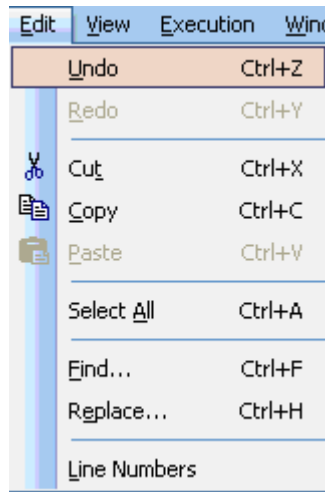


Figure 13. Edit Command Drop-Down Menu

[Table 8](#) summarizes the Edit command functions.

Table 8. Edit Command Drop-Down Menu Functions

Command	Shortcut	Function
Undo	Ctrl + Z	Undo last action
Redo		Repeat last action
Cut	Ctrl + X	Cut selected text
Copy	Ctrl + C	Copy selected text to clipboard
Paste	Ctrl + V	Paste selected text from clipboard
Select All	Ctrl + A	Select all text in currently active script
Find	Ctrl + F	Find selected text or item
Replace	Ctrl + H	Replace selected text with new text
Line Numbers		Add line numbers to the currently active script

4.4.2.3 View Commands

The View menu contains commands related to how the HCITester software displays the currently active script file. [Figure 14](#) shows the View menu.

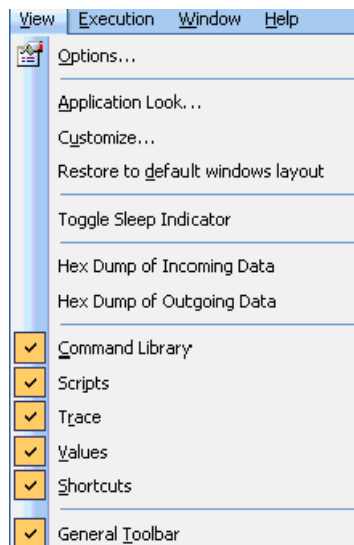


Figure 14. View Command Drop-Down Menu

[Table 9](#) summarizes the View menu command functions.

Table 9. View Command Drop-Down Menu Functions

Command	Function
Options	Trigger the Options screen (see Section 5, Setup and Configuration)
Application Look	Enable the selection of different looks for the HCITester based on the selection in the screen that is triggered
Customize	Enable customization of the HCITester menus and buttons based on user-defined parameters
Restore to default windows layout	Restore the program to default view options (requires exiting and restarting the HCITester software)
Toggle Sleep Indicator	Toggle the SLEEP state of the connected <i>Bluetooth</i> device (This function is identical to the function of the Device Sleep icon located on the toolbar.)
Hex Dump of Incoming Data	Enable a hex view of the incoming data from the <i>Bluetooth</i> device to the host
Hex Dump of Outgoing Data	Enable a hex view of the outgoing data from the host to the <i>Bluetooth</i> device
Command Library Scripts Trace Values Shortcuts General Toolbar	Display or hide specific panes in the active window

4.4.2.4 Window Commands

Figure 15 shows the Window drop-down menu.

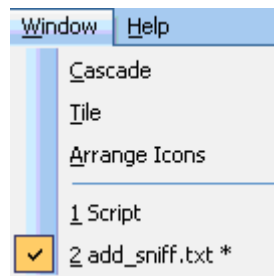


Figure 15. Window Menu Drop-Down Menu

Table 10 summarizes the Window menu command functions.

Table 10. Window Command Drop-Down Menu Functions

Command	Function
Cascade	These commands are not enabled in the current release of the HCITester software.
Tile	
Arrange Icons	
1, 2, etc.	These markers indicate the active panes of the currently active HCITester session.

4.4.2.5 Help Commands

The Help menu contains an option for the user to read about the HCITester software (as shown in Figure 16).

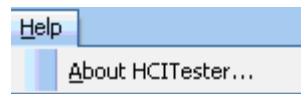


Figure 16. Help Command Drop-Down Menu

4.5 Command Library Pane

The Command Library pane, shown in Figure 17, contains a list of all the supported commands and events.

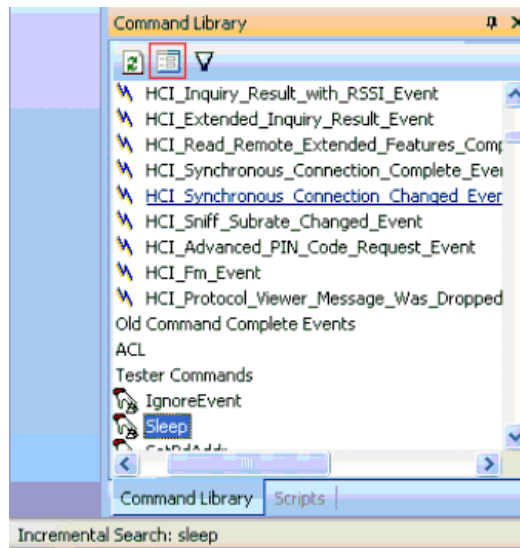


Figure 17. Command Library Pane

To search the Command Library, use the incremental search function as follows: Type a string of partial text to locate the desired command. Press F3 to search forward and Shift+F3 to search backward from the present location (for more information about the incremental search feature, see [Section 4.3.2.1, Searching for a Specific Command in the Command Library](#)).

To add the command (along with any related commands) to the active script, hold down the Ctrl key and double-click the left mouse button, or use the right mouse button pop-up menu (for more information, see [Section 4.3.2.2, Executing a Single Command](#)).

[Table 11](#) summarizes the three Command Library functions.

Table 11. Command Library Icon Functions




Icon		Function
	Refresh	Refresh the contents of the Command Library pane
	Change	Change the HCI Library. Use this button to change between different XML files (for more information, see Section 3.1, Changing the XML File).
	Filter	Filters the contents of the Scripts pane. Pressing this icon displays the Visible Categories dialog box (see Figure 18).

Figure 18 shows the Visible Categories dialog box.

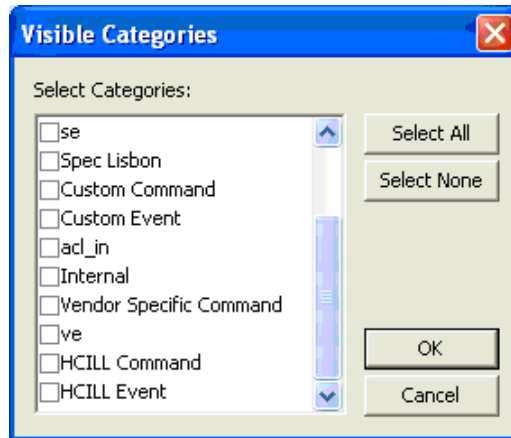


Figure 18. Visible Categories Dialog Box

4.6 Values Pane

The Values pane displays the values of the currently selected command (see Figure 19).

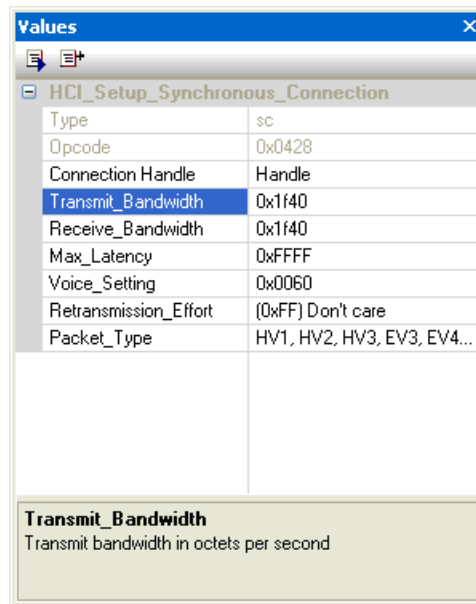




Figure 19. Values Pane

The Values pane reflects the command selected in the Command Library pane or a selected line in the script Editor pane. When the Values pane shows a script line in the Editor, changing a value in the script also changes the script text.

Table 12 describes the Values pane command functions.

Table 12. Values Pane Command Functions

Icon	Shortcut	Function
	Ctrl + F5	Execute the listed command
		Add the listed command to the active script

4.7 My Shortcuts Pane

The My Shortcuts pane allows quick access to predefined script files and code fragments (see [Figure 20](#)).



Figure 20. My Shortcuts Pane

To create a shortcut, follow these steps:

- To create a shortcut to a script file, Drag the desired script from the Scripts pane or from the Explorer window to the Shortcuts pane.
- To create a shortcut to a code fragment, Drag the selected code in the Editor to the Shortcuts pane.

The following commands are available from the Shortcut pane:

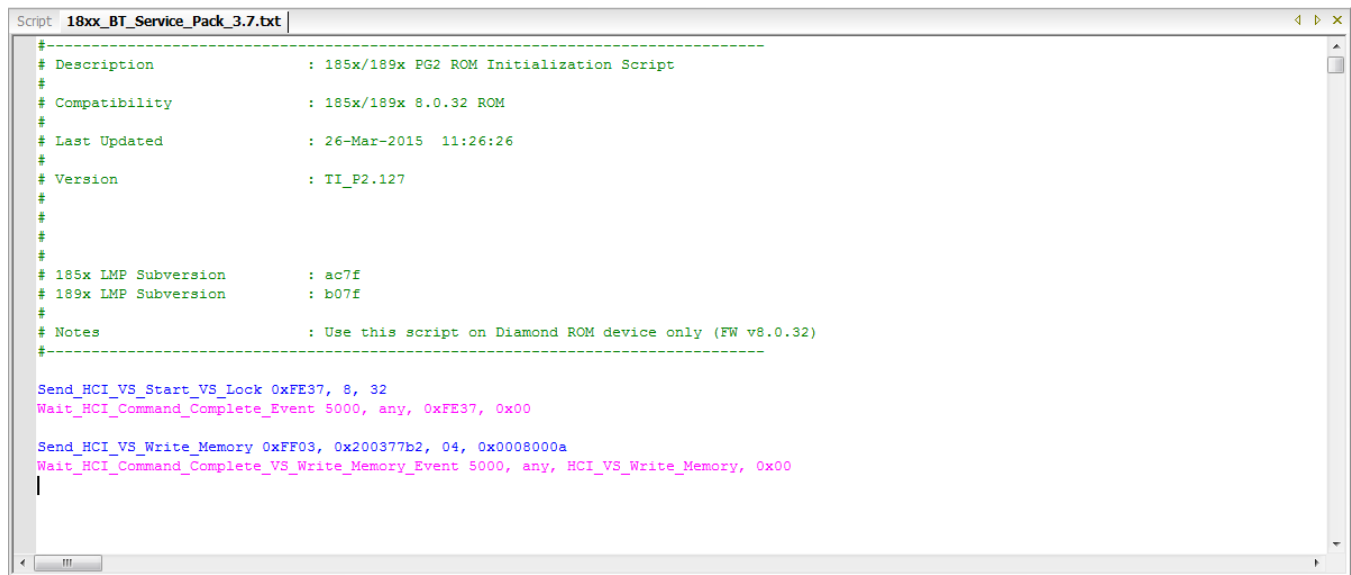
- Run and/or Load: Right-click and select *Edit...* to specify the desired behavior while clicking on this shortcut.
- Display name: Right-click and select *Edit...* to specify a customized label.
- Right-Click menu: Explicitly Run, Load, Delete, or Edit the shortcut properties.
- Shift + Click: Run the selected shortcut.
- Ctrl+ Click: Load the selected shortcut.

4.8 Script Editor Pane

The Script editor pane displays the currently loaded script to execute. While a script is executed, the executed line is highlighted at the bottom of the pane.

More than one script can be loaded into the Script Editor pane. To toggle between the scripts, select the tab of the desired script. For more information regarding loading, editing, and executing scripts, see [Section 4.3.1, Executing Scripts](#).

[Figure 21](#) shows the Script Editor pane.



```

Script: 18xx_BT_Service_Pack_3.7.txt
#-----
# Description           : 185x/189x PG2 ROM Initialization Script
#
# Compatibility        : 185x/189x 8.0.32 ROM
#
# Last Updated         : 26-Mar-2015  11:26:26
#
# Version              : II_P2.127
#
#
#
# 185x LMP Subversion   : ac7f
# 189x LMP Subversion   : b07f
#
# Notes                : Use this script on Diamond ROM device only (FW v8.0.32)
#-----

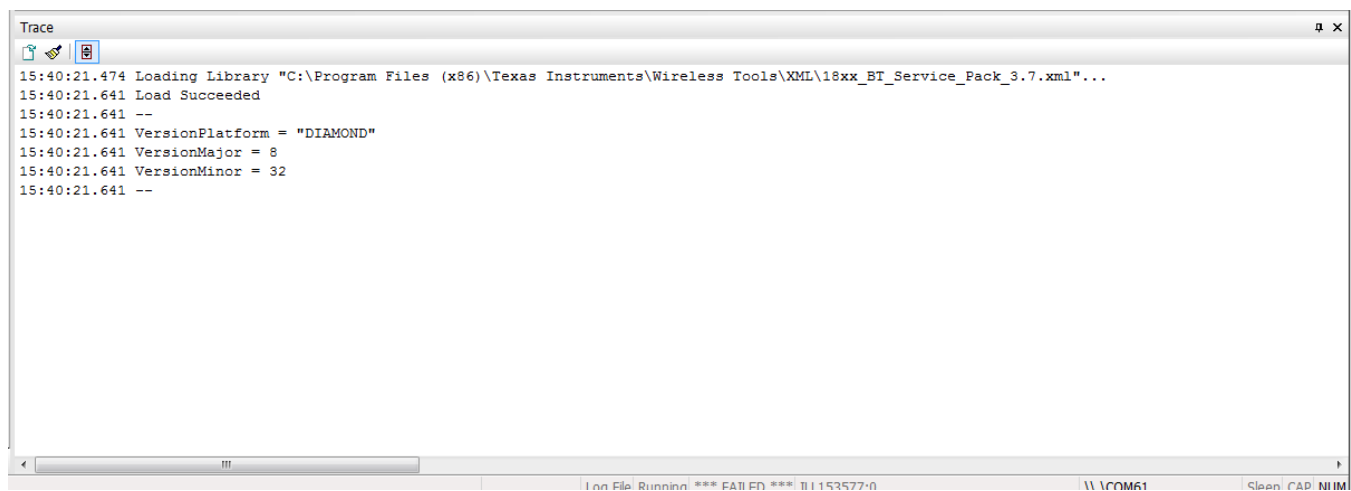
Send_HCI_VS_Start_VS_Lock 0xFE37, 8, 32
Wait_HCI_Command_Complete_Event 5000, any, 0xFE37, 0x00

Send_HCI_VS_Write_Memory 0xFF03, 0x200377b2, 04, 0x0008000a
Wait_HCI_Command_Complete_VS_Write_Memory_Event 5000, any, HCI_VS_Write_Memory, 0x00
    
```

Figure 21. Script Editor

4.9 Trace Pane

The Trace pane displays the commands, events, and raw data communication of the HCITransport program. [Figure 22](#) shows the Trace pane.



```

Trace
15:40:21.474 Loading Library "C:\Program Files (x86)\Texas Instruments\Wireless Tools\XML\18xx_BT_Service_Pack_3.7.xml"...
15:40:21.641 Load Succeeded
15:40:21.641 --
15:40:21.641 VersionPlatform = "DIAMOND"
15:40:21.641 VersionMajor = 8
15:40:21.641 VersionMinor = 32
15:40:21.641 --
    
```




Figure 22. Trace Pane

The following display options are available in the Trace pane:

- **Customize Colors:** Select the Trace option in the Options dialog box (for information on customizing the font and display colors of the trace elements, see [Section 5.3, Trace](#)).
- **Automatic Save to File:** Select the Log option in the Options dialog box (for information on log file configuration options, see [Figure 28](#)).

[Table 13](#) describes the Trace pane icon functions.

Table 13. Trace Pane Icon Functions

Icon	Function
 Export Trace Log	Export the Trace log file to a different location. This option opens a new screen for selecting a new name for and location to save the file.
 Clear Trace Pane	Clear the Trace pane display.
 Automatic Scroll	Automatically scrolls through the active script.

To trace the raw data of a running command or script, select Hex Dump of Incoming Data or Hex Dump of Outgoing Data from the View menu for the selected COM port. [Figure 23](#) shows the View menu.

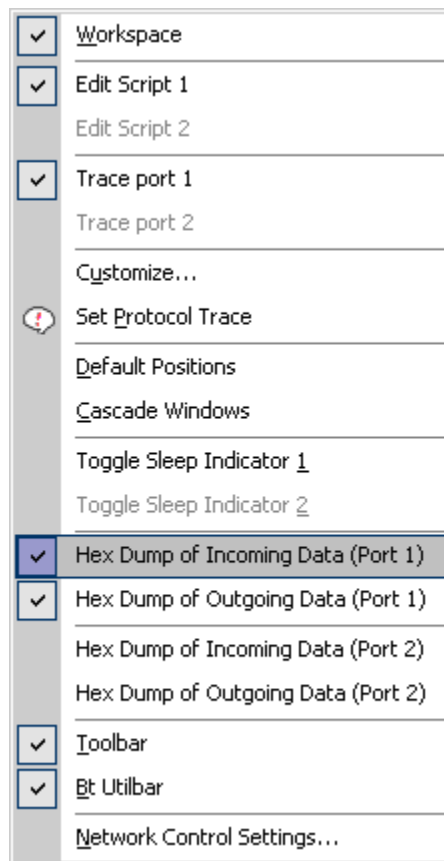


Figure 23. Selecting Raw HCI Data to Trace on the View Menu

After the menu option is selected, all data transferred through the UART interface are visible in the Port Trace View window.

5 Setup and Configuration Using the Options Window

The Options window controls software setup and configuration and is available from the View menu (see [Section 4.4.2.3, View Commands](#)).

5.1 Network Configuration Option

The Network configuration option enables multiple HCITester applications running on different machines to be linked on the same network domain.

To bind multiple HCITester applications, specify a group name and check the Network Control Active box, as shown in [Figure 24](#).

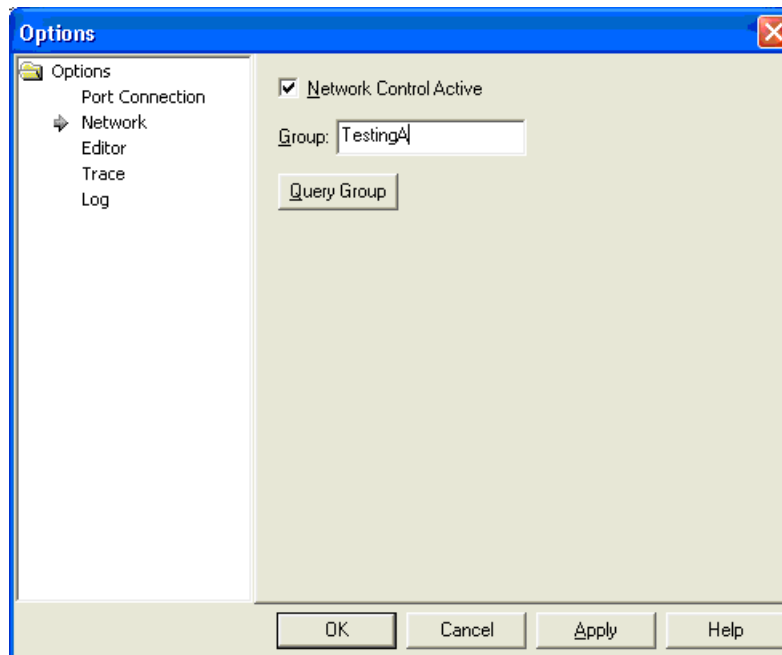


Figure 24. Network Configuration Option

When multiple HCITester applications are in the same network group, the programs start operating together. When Stop is clicked on one program, all running programs stop.

The status bar indication shown in [Figure 25](#) displays a unique name given to the running process and the group name.

CNA0123456:1, TestingA

Figure 25. Status Bar Indicator for Network Configuration

5.2 Editor Option

The Editor option allows the font and display colors of the Editor elements to be customized (see Figure 26).

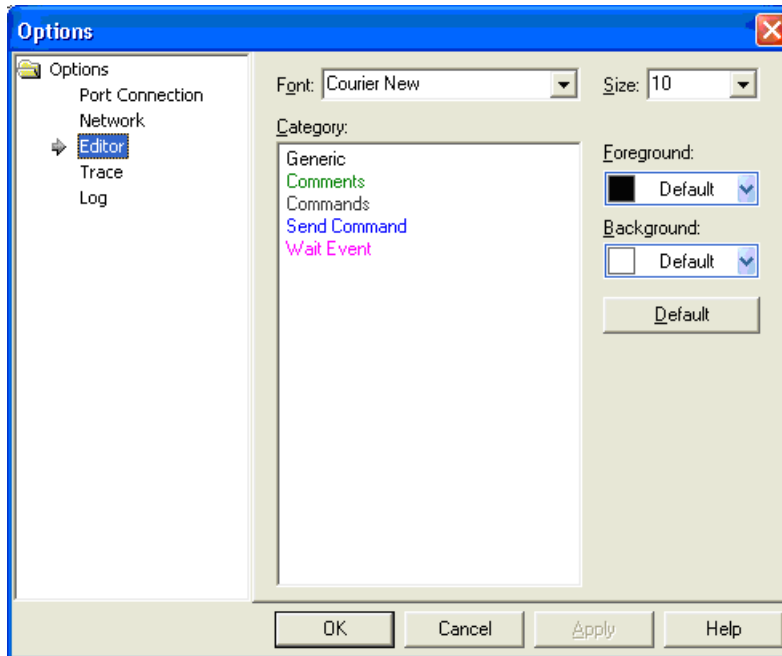


Figure 26. Editor Configuration

5.3 Trace Option

The Trace configuration option allows the font and display colors of the trace elements to be customized (see Figure 27).

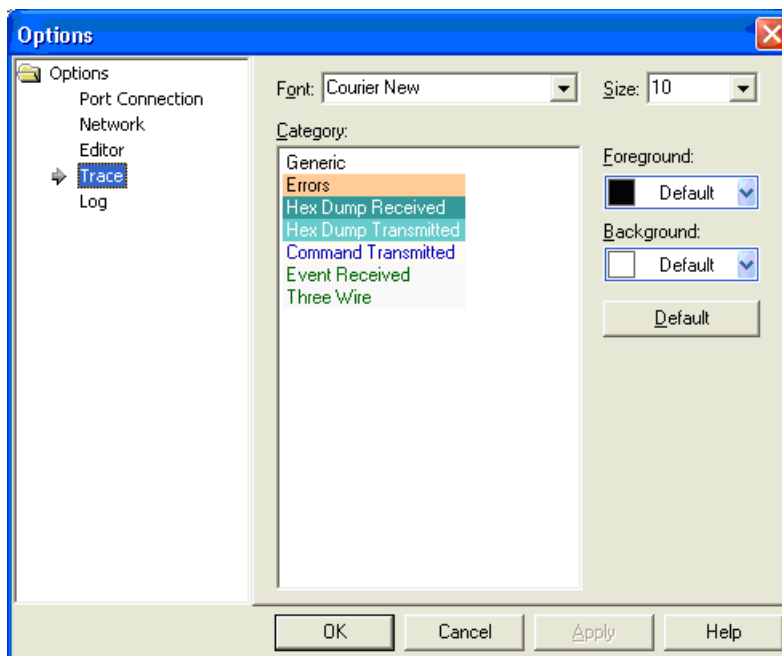


Figure 27. Trace Configuration Option

5.4 Log File Configuration Options

The log file option automatically saves the trace window contents while a script is running. [Figure 28](#) shows the log file configuration options.

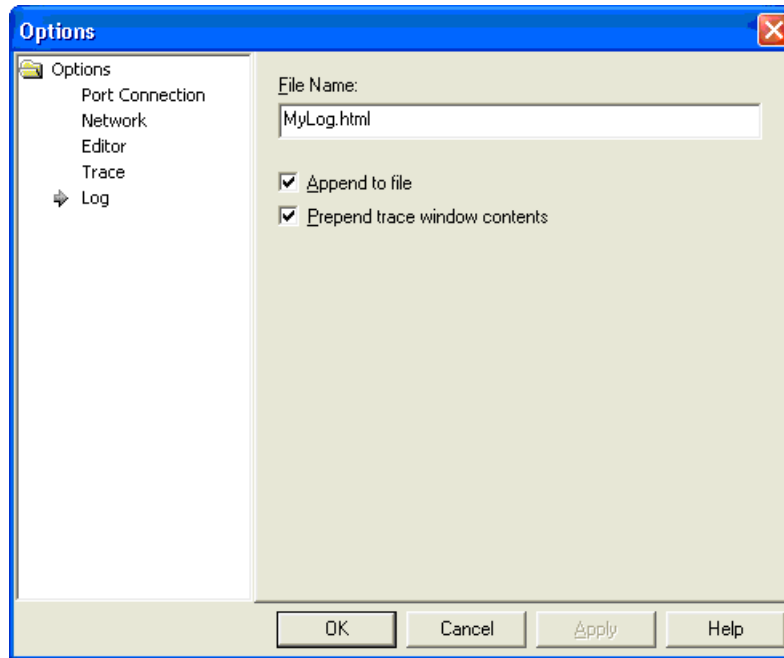


Figure 28. Log File Configuration Options


[Table 14](#) summarizes the log configuration options.

Table 14. Log Configuration Options

Option	Result
File Name	Three types of file extensions are allowed: .txt (plain text file) .htm (HTML formatted file) .xml (XML data file information)
Append	If this box is checked, then new log traces are appended to the existing file. Otherwise, a file is created each time a new script is executed.
Prepend	Adds currently displayed events to the active log file.

List of Shortcuts

Table 15. Available HCITester Shortcuts

Command	Action
F5	Execute or Stop script execution
Ctrl+F5	Execute current selection
F11	Execute last command
F12	Switch to last executed script
Ctrl+F11	Pop-up a list of recently-used commands
Ctrl+F12	Pop-up a list of recently executed scripts
F8	Clear Trace
Editor Commands	
Ctrl+C	Copy selection to clipboard
Ctrl+V	Paste from clipboard
Ctrl+X	Cut selection to clipboard
Ctrl+F	Pop-up <i>Find</i> dialog box
Ctrl+H	Pop-up <i>Replace</i> dialog box
F3	Repeat last search
Shift+F3	Repeat last search backwards
Ctrl+F3	Search for current word
Ctrl+A	Select all text
Ctrl+Z	Undo last action
Ctrl+Y	Redo the previously undone action
File Commands	
Ctrl+N	Create a new script
Ctrl+O	Open an existing script file
Ctrl+P	Print the current script
Ctrl+S	Save the current script
Ctrl+F6	Switch to the next script
Ctrl+Shift+F6	Switch to the previous script
Undocumented Commands	
Ctrl + 	Resets the COM port in cases when an error on the H4 protocol causes the port to get stuck
Ctrl+Shift+ Numpad-	Switch RTS on the serial port
Ctrl+Shift+ Numpad+	Switch DTR on the serial port
Ctrl+0..9	Run pre assigned scripts 0 to 9
	Add Shift for 10 to 19
Ctrl+Alt+0..9	Assign a script 0 to 9.
	Add Shift for 10 to 19

Terms and Abbreviations

Table 16 lists terms and abbreviations.

Table 16. Terms and Abbreviations

Term	Description
BD_ADDR	Bluetooth device address
BER	Bit error rate
BT	Bluetooth
HCI	Host controller interface
Host/host PC	A PC connected to the device through the serial port
LMP	Link manager protocol
LQM	Link quality monitor
PER	Packet error rate
RF	Radio frequency
RSSI	Received signal strength indication
SW	Software
VS	Vendor-specific

Revision History

Changes from A Revision (May 2015) to B Revision	Page
• Changed organization of user's guide	1
• Added Section 1, Requirements	3
• Added Section 2, Installation	3
• Added Section 3, Post Installation Requirements	4
• Added highlighted Change Library button in Figure 3	4
• Added <i>Bluetooth (WL18xx and WL18xxQ) Vendor-Specific HCI Commands User's Guide (SWRU303)</i> in Section 4.1, Port Connection	7
• Added Appendix B, Terms and Abbreviations	26

IMPORTANT NOTICE

Texas Instruments Incorporated and its subsidiaries (TI) reserve the right to make corrections, enhancements, improvements and other changes to its semiconductor products and services per JESD46, latest issue, and to discontinue any product or service per JESD48, latest issue. Buyers should obtain the latest relevant information before placing orders and should verify that such information is current and complete. All semiconductor products (also referred to herein as "components") are sold subject to TI's terms and conditions of sale supplied at the time of order acknowledgment.

TI warrants performance of its components to the specifications applicable at the time of sale, in accordance with the warranty in TI's terms and conditions of sale of semiconductor products. Testing and other quality control techniques are used to the extent TI deems necessary to support this warranty. Except where mandated by applicable law, testing of all parameters of each component is not necessarily performed.

TI assumes no liability for applications assistance or the design of Buyers' products. Buyers are responsible for their products and applications using TI components. To minimize the risks associated with Buyers' products and applications, Buyers should provide adequate design and operating safeguards.

TI does not warrant or represent that any license, either express or implied, is granted under any patent right, copyright, mask work right, or other intellectual property right relating to any combination, machine, or process in which TI components or services are used. Information published by TI regarding third-party products or services does not constitute a license to use such products or services or a warranty or endorsement thereof. Use of such information may require a license from a third party under the patents or other intellectual property of the third party, or a license from TI under the patents or other intellectual property of TI.

Reproduction of significant portions of TI information in TI data books or data sheets is permissible only if reproduction is without alteration and is accompanied by all associated warranties, conditions, limitations, and notices. TI is not responsible or liable for such altered documentation. Information of third parties may be subject to additional restrictions.

Resale of TI components or services with statements different from or beyond the parameters stated by TI for that component or service voids all express and any implied warranties for the associated TI component or service and is an unfair and deceptive business practice. TI is not responsible or liable for any such statements.

Buyer acknowledges and agrees that it is solely responsible for compliance with all legal, regulatory and safety-related requirements concerning its products, and any use of TI components in its applications, notwithstanding any applications-related information or support that may be provided by TI. Buyer represents and agrees that it has all the necessary expertise to create and implement safeguards which anticipate dangerous consequences of failures, monitor failures and their consequences, lessen the likelihood of failures that might cause harm and take appropriate remedial actions. Buyer will fully indemnify TI and its representatives against any damages arising out of the use of any TI components in safety-critical applications.

In some cases, TI components may be promoted specifically to facilitate safety-related applications. With such components, TI's goal is to help enable customers to design and create their own end-product solutions that meet applicable functional safety standards and requirements. Nonetheless, such components are subject to these terms.

No TI components are authorized for use in FDA Class III (or similar life-critical medical equipment) unless authorized officers of the parties have executed a special agreement specifically governing such use.

Only those TI components which TI has specifically designated as military grade or "enhanced plastic" are designed and intended for use in military/aerospace applications or environments. Buyer acknowledges and agrees that any military or aerospace use of TI components which have **not** been so designated is solely at the Buyer's risk, and that Buyer is solely responsible for compliance with all legal and regulatory requirements in connection with such use.

TI has specifically designated certain components as meeting ISO/TS16949 requirements, mainly for automotive use. In any case of use of non-designated products, TI will not be responsible for any failure to meet ISO/TS16949.

Products

Audio	www.ti.com/audio
Amplifiers	amplifier.ti.com
Data Converters	dataconverter.ti.com
DLP® Products	www.dlp.com
DSP	dsp.ti.com
Clocks and Timers	www.ti.com/clocks
Interface	interface.ti.com
Logic	logic.ti.com
Power Mgmt	power.ti.com
Microcontrollers	microcontroller.ti.com
RFID	www.ti-rfid.com
OMAP Applications Processors	www.ti.com/omap
Wireless Connectivity	www.ti.com/wirelessconnectivity

Applications

Automotive and Transportation	www.ti.com/automotive
Communications and Telecom	www.ti.com/communications
Computers and Peripherals	www.ti.com/computers
Consumer Electronics	www.ti.com/consumer-apps
Energy and Lighting	www.ti.com/energy
Industrial	www.ti.com/industrial
Medical	www.ti.com/medical
Security	www.ti.com/security
Space, Avionics and Defense	www.ti.com/space-avionics-defense
Video and Imaging	www.ti.com/video

TI E2E Community

e2e.ti.com