

Hello ,

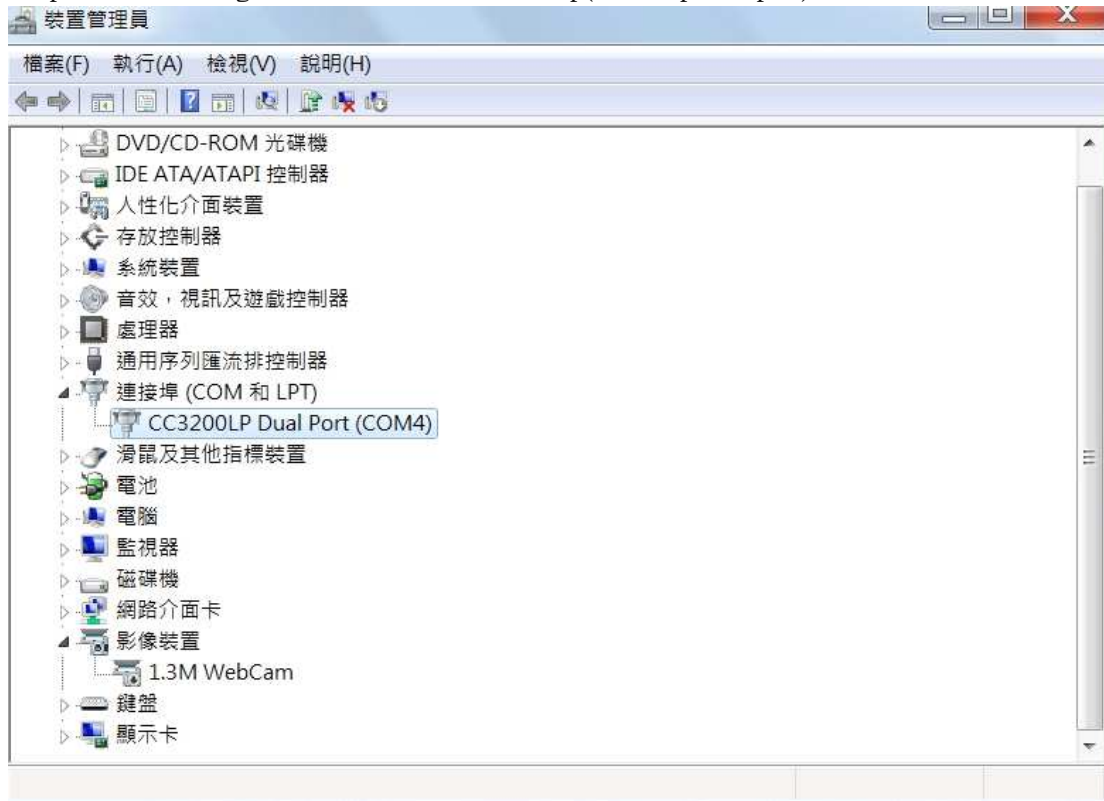
I have tried to debug the CC3200 launchpadxl board which can not do uniflash :

Following the guide in the

[https://e2e.ti.com/support/wireless\\_connectivity/f/968/p/469307/1700299](https://e2e.ti.com/support/wireless_connectivity/f/968/p/469307/1700299)

Here is the record :

1. open device manager and see the com4 shows up(cc3200lp dual port)



2. run uniflash to do format :

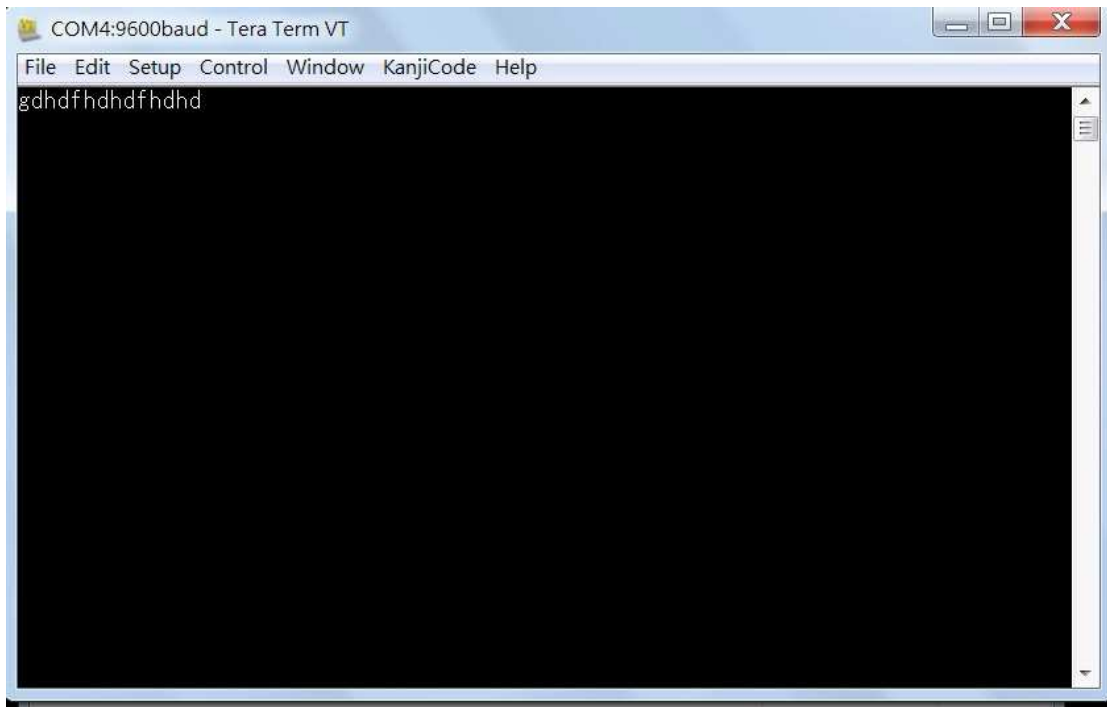


```

[12:25:22] Begin Format operation.
[12:25:26] INFO: > Executing Operation: Connect
[12:25:28] INFO: setting break signal
[12:25:29] INFO: detecting FTDI for device reset
[12:25:29] ERROR: No device USB ports were found
[12:25:29] INFO: --- please restart the device ---
[12:25:43] Cancelling current process <Format>, please wait...
[12:25:44] ERROR: ---reading ACK signal failed---
[12:25:44] WARNING: ---seting break signal to false failed---
[12:25:46] INFO: setting break signal
[12:25:47] INFO: detecting FTDI for device reset
[12:25:47] ERROR: No device USB ports were found
[12:25:47] INFO: --- please restart the device ---
[12:25:47] INFO: Cancel button pressed
[12:25:47] WARNING: ---seting break signal to false failed---
[12:25:47] FATAL: --- Can't connect to device !! ---
[12:26:15] FATAL: Error connecting to the device. Please check your COM
port settings. Error code: -2
[12:26:15] INFO: > Executing Operation: Disconnect
[12:26:15] Operation Canceled: Process<Format> canceled.
[12:26:57] Begin Format operation.
[12:27:01] INFO: > Executing Operation: Connect
[12:27:03] INFO: setting break signal
[12:27:04] INFO: detecting FTDI for device reset
[12:27:04] ERROR: No device USB ports were found
[12:27:04] INFO: --- please restart the device ---
[12:27:17] Cancelling current process <Format>, please wait...
[12:27:19] ERROR: ---reading ACK signal failed---
[12:27:19] WARNING: ---seting break signal to false failed---
[12:27:21] INFO: setting break signal
[12:27:22] INFO: detecting FTDI for device reset
[12:27:22] ERROR: No device USB ports were found
[12:27:22] INFO: --- please restart the device ---
[12:27:22] INFO: Cancel button pressed
[12:27:22] WARNING: ---seting break signal to false failed---
[12:27:22] FATAL: --- Can't connect to device !! ---
[12:27:26] FATAL: Error connecting to the device. Please check your COM
port settings. Error code: -2
[12:27:26] INFO: > Executing Operation: Disconnect
[12:27:26] Operation Canceled: Process<Format> canceled.

```

3. run loop-back test with j6j7 shorted near ftdi side ,OK .can see leeter as typed  
if j6 j7 as original (parallel ),caan not see terminal response



- I also take the voltage measurement of the (capacitor terminals) corresponding to the  
 The order can be swapped for ANA1 and ANA2 ,please view the power\_meas.jpg to check  
 VDD\_ANA1=1.2v  
 VDD\_ANA2 = 1.9v  
 VDD\_DIG1 =1.2v  
 VIN\_I01 = 3.2v  
 These number seems to be off from your expectation though

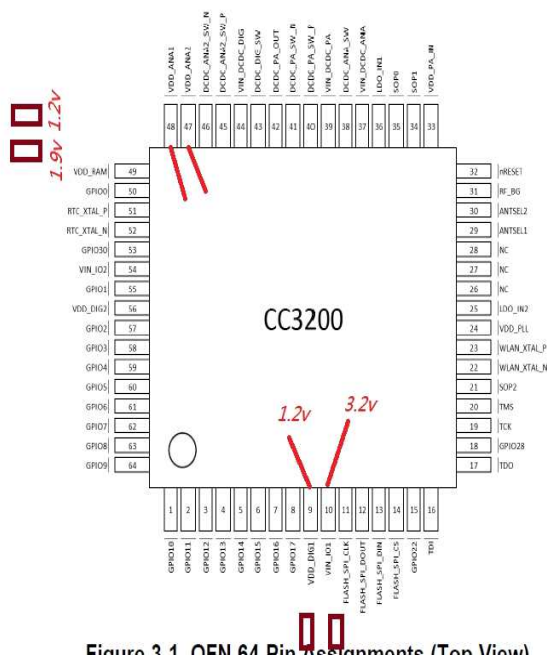
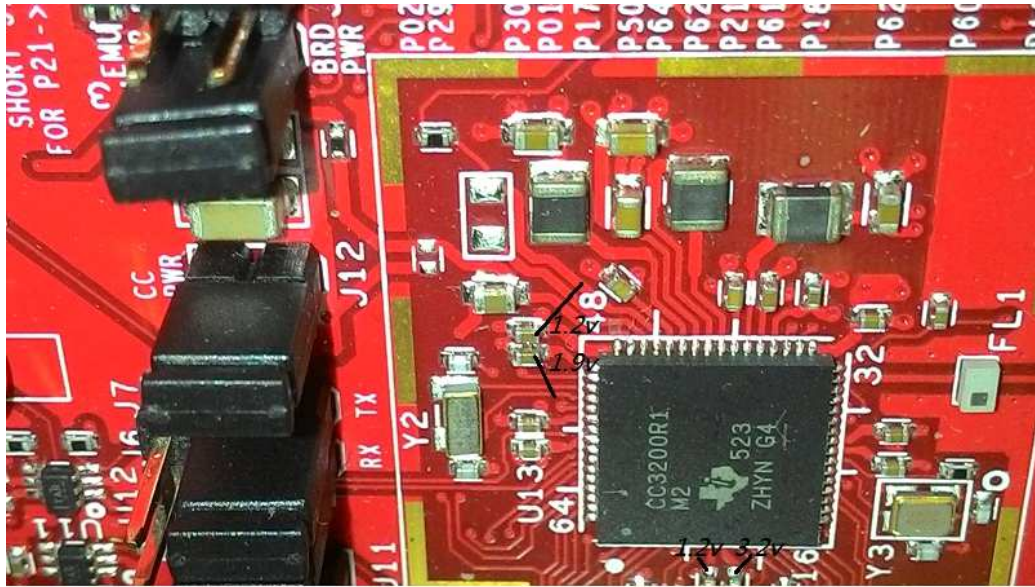
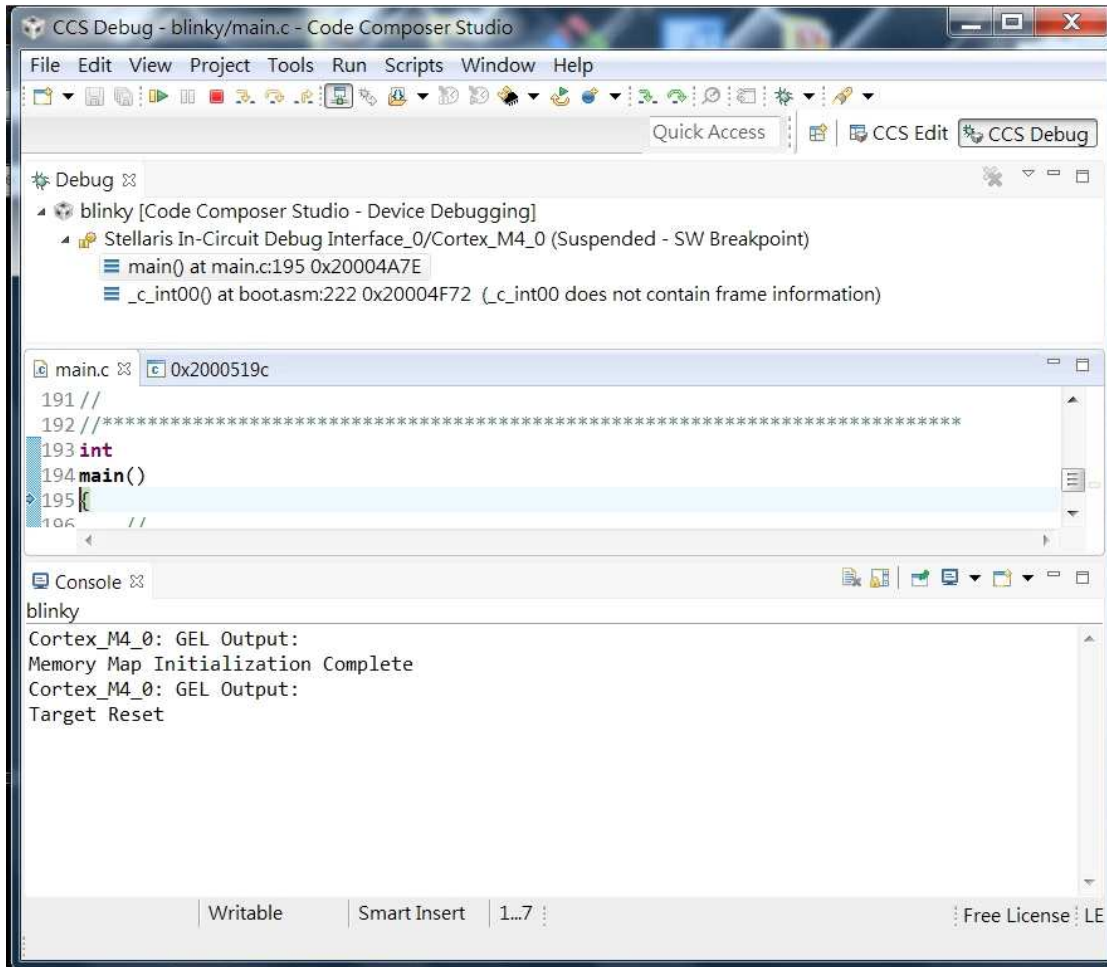


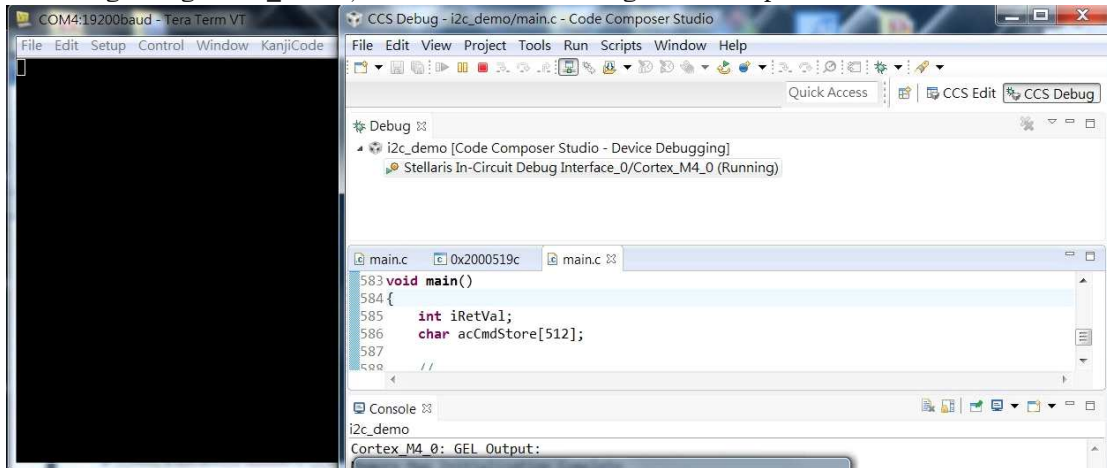
Figure 3-1. QFN 64 Pin Measurements (Top View)



5. I have tried to debug under ccs debug to run like "blink" demo ,but get NO response from the board(no led blinking) .But the console appears to be functioning normally.



6. running debug of i2c\_demo ,ccs runs while terminal gets NO Response



Please advise if other things can be done to test or fix the issue and to be able to flash the board normally.

Thanks and best regards,

Randy Hong

fhong@solistek.com