

# LM48580

*LM48580 High Efficiency Class H, High Voltage, Haptic Piezo Actuator /  
Ceramic Speaker Driver*



Literature Number: SNAS491

[www.BDTIC.com/TI](http://www.BDTIC.com/TI)

# High Efficiency Class H, High Voltage, Haptic Piezo Actuator / Ceramic Speaker Driver

## General Description

The LM48580 is a fully differential, high voltage driver for piezo actuators and ceramic speakers for portable multi-media devices. Part of National's Powerwise product line, the LM48580's Class H architecture offers significant power savings compared to traditional Class AB amplifiers. The device provides 30V<sub>P-P</sub> output drive while consuming just 15mW of quiescent power.

The LM48580 is a single supply driver with an integrated boost converter which allows the device to deliver 30V<sub>P-P</sub> from a single 3.6V supply.

The LM48580 has three pin-programmable gain settings and a low power Shutdown mode that reduces quiescent current consumption to 0.1μA. The LM48580 is available in an ultra-small 12-bump micro SMD package (1.46mm x 1.97mm).

## Key Specifications

- Output Voltage at V<sub>DD</sub> = 3.6V  
R<sub>L</sub> = 6μF+10Ω, THD+N ≤ 1% 30V<sub>P-P</sub> (typ)
- Quiescent Power Supply current at 3.6V 2.7mA (typ)
- Power Dissipation at 25V<sub>P-P</sub> 800mW (typ)
- Shutdown current 0.1μA (typ)

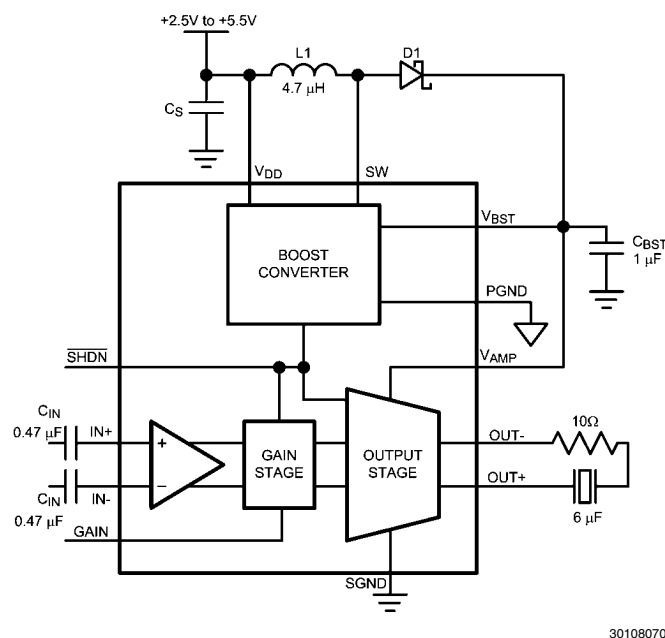
## Features

- Class H Driver
- Integrated Boost Converter
- Bridge-tied Load Output
- Differential Input
- Three Pin-Programmable Gains
- Low Supply Current
- Minimum external components
- Micro-power shutdown
- Thermal overload protection
- Available in space-saving 12-bump microSMD package

## Applications

- Touch screen Smart Phones
- Tablet PCs
- Portable Electronic Devices
- MP3 Players

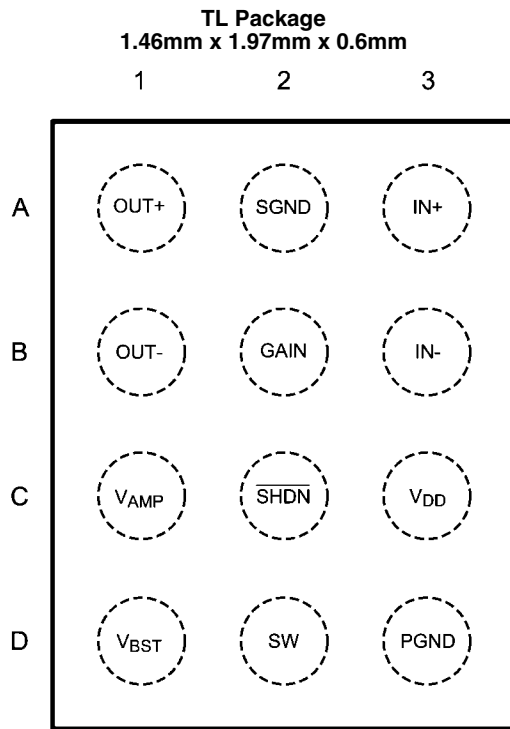
## Typical Application



**FIGURE 1. Typical Application Circuit**

Boomer® is a registered trademark of National Semiconductor Corporation.

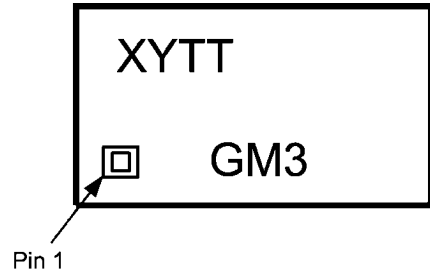
## Connection Diagrams



**Top View**  
Order Number LM48580TL  
See NS Package Number TLA12Z1A

30108071

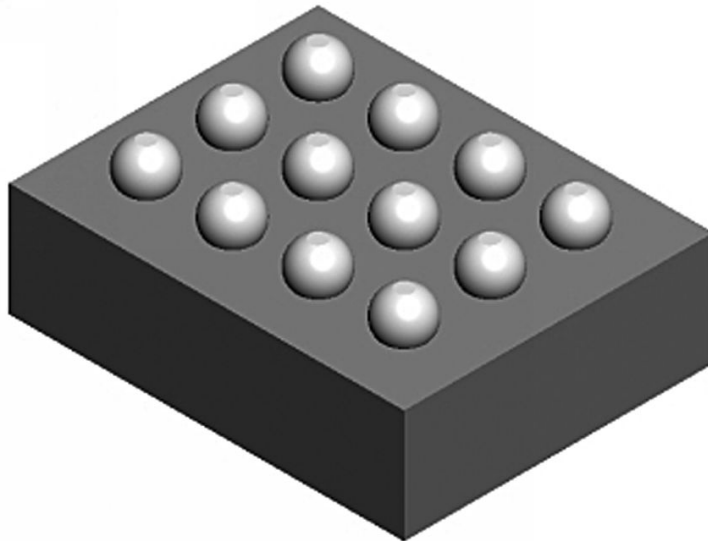
**12-Bump micro SMD Marking**



**Top View**  
XY = Date code  
TT = Die traceability  
G = Boomer Family  
M3 = LM48580TL

30108072

**TLA12 Package View (Bumps Up)**



30108031

## Ordering Information

Ordering Information Table

Order Number	Package	Package Drawing Number	Transport Media	MSL Level	Green Status
LM48580TL	12 Bump $\mu$ SMD	TLA12Z1A	250 units on tape and reel	1	RoHS & no Sb/Br
LM48580TLX	12 Bump $\mu$ SMD	TLA12Z1A	3000 units on tape and reel	1	RoHS & no Sb/Br

## Pin Descriptions

TABLE 1. Bump Descriptions

Bump	Name	Description
A1	OUT+	Amplifier Non-Inverting Output
A2	SGND	Amplifier Ground
A3	IN+	Amplifier Non-Inverting Input
B1	OUT-	Amplifier Inverting Output
B2	GAIN	Gain Select: GAIN = float: $A_V = 18\text{dB}$ GAIN = GND: $A_V = 24\text{dB}$ GAIN = $V_{DD}$ : $A_V = 30\text{dB}$
B3	IN-	Amplifier Inverting Input
C1	$V_{AMP}$	Amplifier Supply Voltage. Connect to $V_{BST}$
C2	$\overline{\text{SHDN}}$	Active Low Shutdown. Drive $\overline{\text{SHDN}}$ low to disable device. Connect $\overline{\text{SHDN}}$ to $V_{DD}$ for normal operation.
C3	$V_{DD}$	Power Supply
D1	$V_{BST}$	Boost Converter Output
D2	SW	Boost Converter Switching Node
D3	PGND	Boost Converter Ground

## Absolute Maximum Ratings (Note 1, Note 2)

If Military/Aerospace specified devices are required, please contact the National Semiconductor Sales Office/Distributors for availability and specifications.

Supply Voltage <small>(Note 1)</small>	6V
SW Voltage	25V
VBST Voltage	21V
V <sub>AMP</sub>	17V
Input Voltage	−0.3V to V <sub>DD</sub> + 0.3V
Power Dissipation <small>(Note 3)</small>	Internally limited
ESD Rating, Human Body Model <small>(Note 4)</small>	2kV
ESD Rating, Machine Model <small>(Note 5)</small>	150V

ESD Rating, Charge Device Model (Note 6)

Storage Temperature	−65°C to +150°C
Junction Temperature	150°C
Thermal Resistance	
θ <sub>JA</sub> (TLA12Z1A)	64 °C/W
Soldering Information	
See AN-1112 "Micro SMD Wafer Level Chip Scale Package."	

## Operating Ratings

Temperature Range	
T <sub>MIN</sub> ≤ T <sub>A</sub> ≤ T <sub>MAX</sub> (Note 10)	−40°C ≤ T <sub>A</sub> ≤ +85°C
Supply Voltage	
V <sub>DD</sub>	2.5V ≤ V <sub>DD</sub> ≤ 5.5V

## Electrical Characteristics V<sub>DD</sub> = 3.6V (Note 1, Note 2)

The following specifications apply for R<sub>L</sub> = 6μF + 10Ω, C<sub>BST</sub> = 1μF, C<sub>IN</sub> = 0.47μF, A<sub>V</sub> = 24dB unless otherwise specified. Limits apply for T<sub>A</sub> = 25°C.

Symbol	Parameter	Conditions	LM48580			Units (Limits)
			Min <small>(Note 8)</small>	Typ <small>(Note 7)</small>	Max <small>(Note 8)</small>	
V <sub>DD</sub>	Supply Voltage Range		2.5		5.5	V
I <sub>DD</sub>	Quiescent Power Supply Current	V <sub>IN</sub> = 0V, R <sub>L</sub> = ∞				
		V <sub>DD</sub> = 3.6V		2.7	4	mA
		V <sub>DD</sub> = 3V		3		mA
P <sub>D</sub>	Power Consumption	V <sub>OUT</sub> = 25 <sub>P-P</sub> , f = 200Hz				
		V <sub>DD</sub> = 3.6V		800		mW
		V <sub>DD</sub> = 3V		830		mW
I <sub>SD</sub>	Shutdown Current	Shutdown Enabled		0.5	2	μA
T <sub>WU</sub>	Wake-up Time	From Shutdown	1	1.4	1.6	ms
V <sub>OS</sub>	Differential Output Offset Voltage	V <sub>DD</sub> = 3.6V		63	360	mV
A <sub>V</sub>	Gain	GAIN = FLOAT	17.5	18	18.5	dB
		GAIN = GND	23.5	24	24.5	dB
		GAIN = V <sub>DD</sub>	29.5	30	30.5	dB
R <sub>IN</sub>	Input Resistance		46	52	58	kΩ
R <sub>IN</sub>	Gain Input Resistance	to GND			575	kΩ
		to V <sub>DD</sub>			131	kΩ
V <sub>IN</sub>	Maximum Input Voltage Range	A <sub>V</sub> = 18dB			3	V <sub>P-P</sub>
V <sub>OUT</sub>	Output Voltage	f = 200Hz, THD+N = 1%				
		V <sub>DD</sub> = 3.6V		30.5		V <sub>P-P</sub>
		V <sub>DD</sub> = 3V	25	30.5		V <sub>P-P</sub>
		f = 2kHz, THD+N = 5%				
		V <sub>DD</sub> = 3.6V		11		V <sub>P-P</sub>
		V <sub>DD</sub> = 3V		8.5		V <sub>P-P</sub>
THD+N	Total Harmonic Distortion + Noise	V <sub>OUT</sub> = 25V <sub>P-P</sub> , f = 200Hz		0.16		%
PSRR	Power Supply Rejection Ratio (Figure TBD)	V <sub>DD</sub> = 3.6V + 200mV <sub>P-P</sub> sine, Inputs AC GND				
		f <sub>RIPPLE</sub> = 217Hz,		75		dB
		f <sub>RIPPLE</sub> = 1kHz		71		dB
CMRR	Common Mode Rejection Ratio (Figure TBD)	V <sub>CM</sub> = 200mV <sub>P-P</sub> sine				
		f <sub>RIPPLE</sub> = 217Hz		56		dB
		f <sub>RIPPLE</sub> = 1kHz		55		dB

Symbol	Parameter	Conditions	LM48580			Units (Limits)
			Min (Note 8)	Typ (Note 7)	Max (Note 8)	
$f_{SW}$	Boost Converter Switching Frequency			2.1		MHz
$I_{LIMIT}$	Boost Converter Current Limit				1100	mA
$V_{IH}$	Logic High Input Threshold	$\overline{SHDN}$	1.2			V
$V_{IL}$	Logic Low Input Threshold	$\overline{SHDN}$			0.45	V
$I_{IN}$	Input Leakage Current	$\overline{SHDN}$		0.1	1	$\mu A$

**Note 1:** "Absolute Maximum Ratings" indicate limits beyond which damage to the device may occur, including inoperability and degradation of device reliability and/or performance. Functional operation of the device and/or non-degradation at the *Absolute Maximum Ratings* or other conditions beyond those indicated in the *Recommended Operating Conditions* is not implied. The *Recommended Operating Conditions* indicate conditions at which the device is functional and the device should not be operated beyond such conditions. All voltages are measured with respect to the ground pin, unless otherwise specified.

**Note 2:** The *Electrical Characteristics* tables list guaranteed specifications under the listed *Recommended Operating Conditions* except as otherwise modified or specified by the *Electrical Characteristics Conditions* and/or Notes. Typical specifications are estimations only and are not guaranteed.

**Note 3:** The maximum power dissipation must be derated at elevated temperatures and is dictated by  $T_{JMAX}$ ,  $\theta_{JA}$ , and the ambient temperature,  $T_A$ . The maximum allowable power dissipation is  $P_{DMAX} = (T_{JMAX} - T_A) / \theta_{JA}$  or the given in *Absolute Maximum Ratings*, whichever is lower.

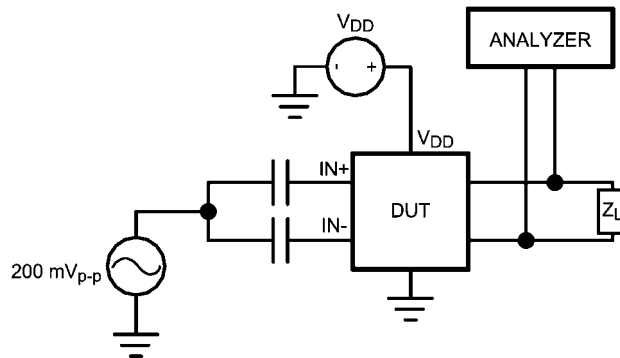
**Note 4:** Human body model, applicable std. JESD22-A114C.

**Note 5:** Machine model, applicable std. JESD22-A115-A.

**Note 6:** Charge device model, applicable std. JESD22-C101-C.

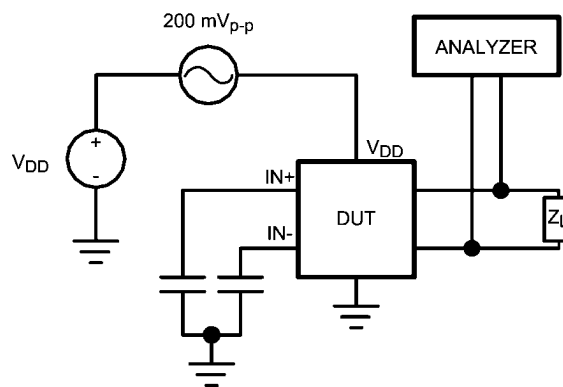
**Note 7:** Typical values represent most likely parametric norms at  $T_A = +25^\circ C$ , and at the *Recommended Operation Conditions* at the time of product characterization and are not guaranteed.

**Note 8:** Datasheet min/max specification limits are guaranteed by design, test, or statistical analysis.



30108073

FIGURE 2. PSRR Test Circuit

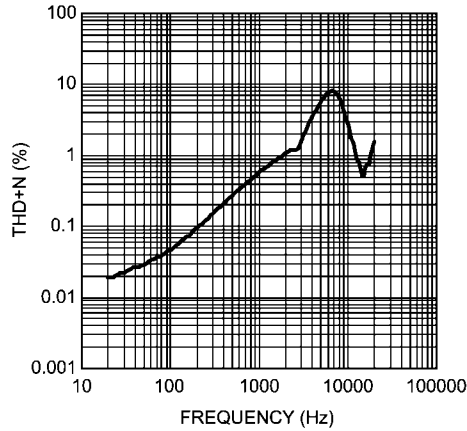


30108074

FIGURE 3. CMRR Test Circuit

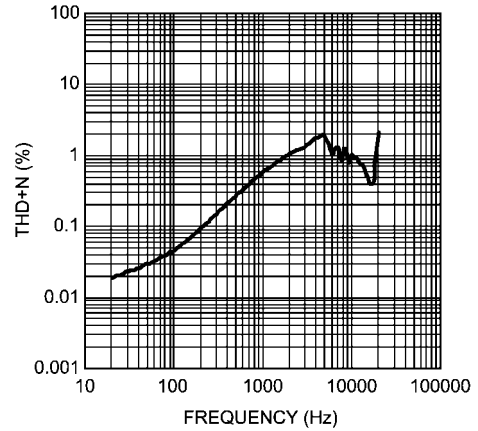
## Typical Performance Characteristics

**THD+N vs Frequency**  
 $V_{DD} = 3.6V$ ,  $V_{OUT} = 9V_{P-P}$   
 $R_L = 6\mu F + 10\Omega$



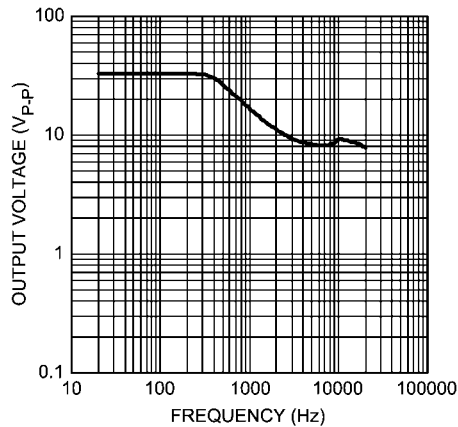
30108011

**THD+N vs Frequency**  
 $V_{DD} = 4.2V$ ,  $V_{OUT} = 10V_{P-P}$   
 $R_L = 6\mu F + 10\Omega$



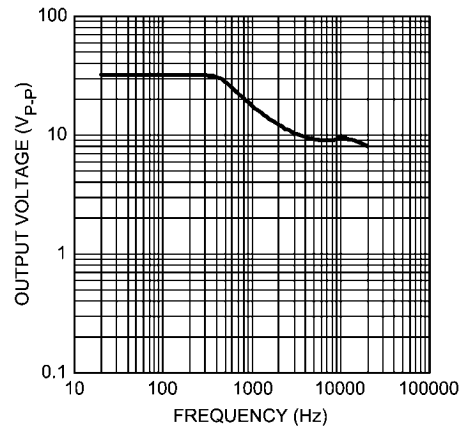
30108012

**Output Voltage vs Frequency**  
 $V_{DD} = 3.6V$ , THD+N = 5%  
 $R_L = 6\mu F + 10\Omega$



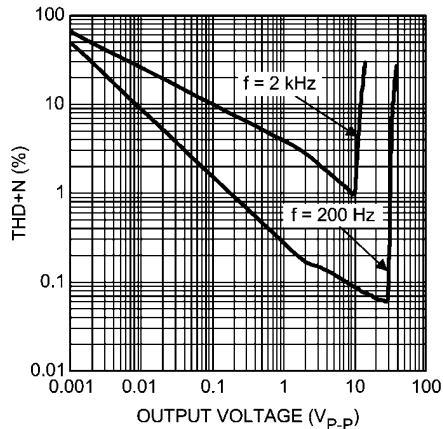
30108013

**Output Voltage vs Frequency**  
 $V_{DD} = 4.2V$ , THD+N = 5%  
 $R_L = 6\mu F + 10\Omega$



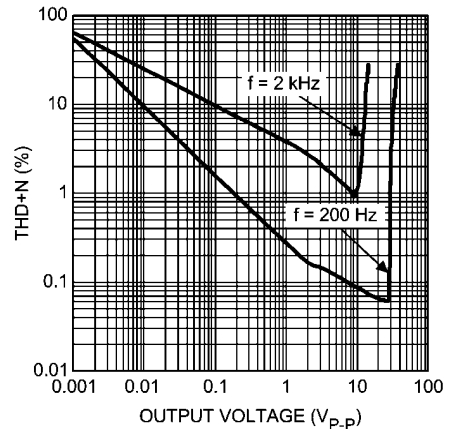
30108014

**THD+N vs Output Voltage**  
 $V_{DD} = 3.6V$ ,  $R_L = 6\mu F + 10\Omega$



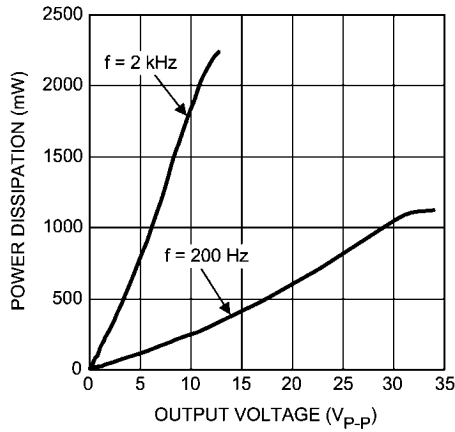
30108009

**THD+N vs Output Voltage**  
 $V_{DD} = 4.2V$ ,  $R_L = 6\mu F + 10\Omega$



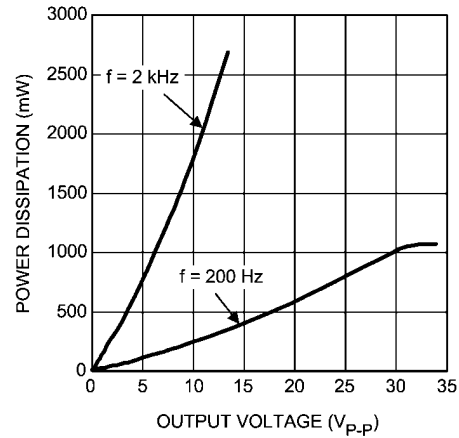
30108010

**Power Consumption vs Output Voltage**  
 $V_{DD} = 3.6V$ ,  $R_L = 6\mu F + 10\Omega$



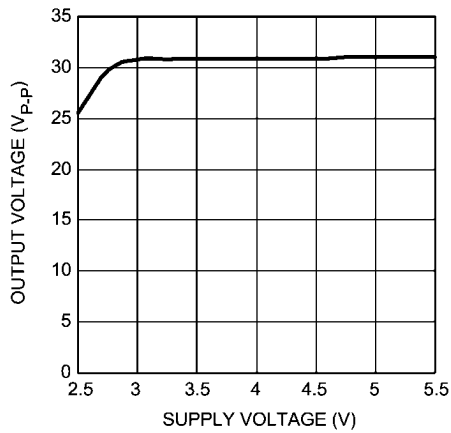
30108015

**Power Consumption vs Output Voltage**  
 $V_{DD} = 4.2V$ ,  $R_L = 6\mu F + 10\Omega$



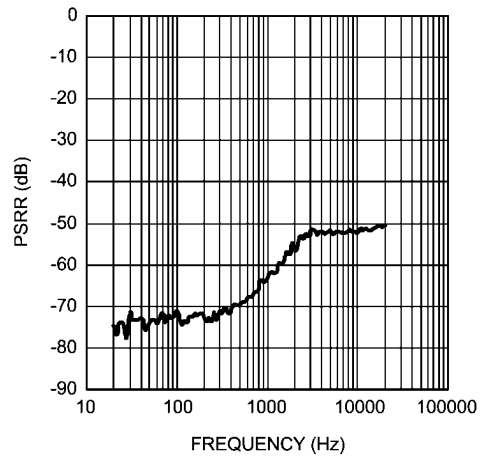
30108016

**Output Voltage vs Supply Voltage**  
 $R_L = 6\mu F + 10\Omega$ ,  $f = 200Hz$



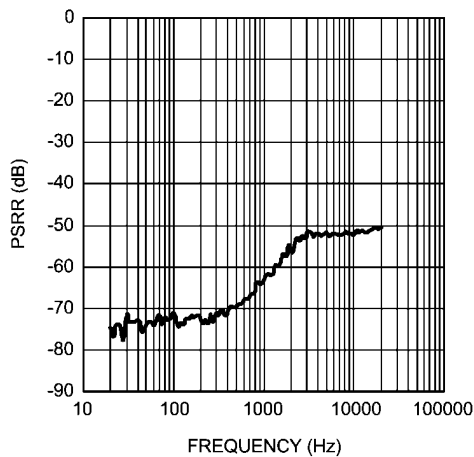
30108017

**PSRR vs Frequency**  
 $V_{DD} = 3.6V$ ,  $V_{RIPPLE} = 200mV_{P-P}$   
 $R_L = 6\mu F + 10\Omega$ ,  $f = 200Hz$



30108019

**CMRR vs Frequency**  
 $V_{DD} = 3.6V$ ,  $V_{CM} = 1V_{P-P}$   
 $R_L = 6\mu F + 10\Omega$

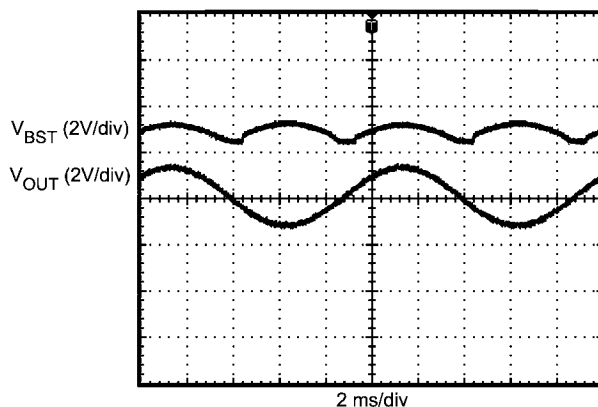


30108019

## Application Information

### GENERAL AMPLIFIER FUNCTION

The LM48580 is a fully differential, Class H ceramic element driver for ceramic speakers and haptic actuators. The integrated, high efficiency boost converter dynamically adjusts the amplifier's supply voltage based on the output signal, increasing headroom and improving efficiency compared to a conventional Class AB driver. The fully differential amplifier takes advantage of the increased headroom and bridge-tied load (BTL) architecture, delivering significantly more voltage than a single-ended amplifier.



30108021

FIGURE 4. Class H Operation

### PROPERTIES OF PIEZOELECTRIC ELEMENTS

Piezoelectric elements such as ceramic speakers or piezoelectric haptic actuators are capacitive in nature. Due to their capacitive nature, piezoelectric elements appear as low impedance loads at high frequencies (typically above 5kHz). A resistor in series with the piezoelectric element is required to ensure the amplifier does not see a short at high frequencies.

The value of the series resistor depends on the capacitance of the element, the frequency content of the output signal, and the desired frequency response. Higher valued resistors minimize power dissipation at high frequencies, but also impacts the frequency response. This configuration is ideal for use with haptic actuators, where the majority of the signal content is typically below 2kHz. Conversely, lower valued resistors maximize frequency response, while increasing power dissipation at high frequency. This configuration is ideal for ceramic speaker applications, where high frequency audio content needs to be reproduced. Resistor values are typically between  $10\Omega$  and  $20\Omega$ .

### DIFFERENTIAL AMPLIFIER EXPLANATION

The LM48580 features a fully differential amplifier. A differential amplifier amplifies the difference between the two input

### CLASS H OPERATION

Class H is a modification of another amplifier class (typically Class B or Class AB) to increase efficiency and reduce power dissipation. To decrease power dissipation, Class H uses a tracking power supply that monitors the output signal and adjusts the supply accordingly. When the amplifier output is below  $3V_{P-P}$ , the nominal boost voltage is 6V. As the amplifier output increases above  $3V_{P-P}$ , the boost voltage tracks the amplifier output as shown in Figure 4. When the amplifier output falls below  $3V_{P-P}$ , the boost converter returns to its nominal output voltage. Power dissipation is greatly reduced compared to conventional Class AB drivers.

signals. A major benefit of the fully differential amplifier is the improved common mode rejection ratio (CMRR) over single ended input amplifiers. The increased CMRR of the differential amplifier reduces sensitivity to ground offset related noise injection, especially important in noisy systems.

### THERMAL SHUTDOWN

The LM48580 features thermal shutdown that protects the device during thermal overload conditions. When the junction temperature exceeds  $+160^{\circ}\text{C}$ , the device is disabled. The LM48580 remains disabled until the die temperature falls below the  $+160^{\circ}\text{C}$  and  $\overline{\text{SHDN}}$  is toggled.

### GAIN SETTING

The LM48580 features three internally configured gain settings 18, 24, and 30dB. The device gain is selected through a single pin (GAIN). The gain settings are shown in Table 2.

TABLE 2. Gain Setting

Gain	Gain Setting
FLOAT	18dB
GND	24dB
VDD	30dB

### SHUTDOWN FUNCTION

The LM48580 features a low current shutdown mode. Set  $\overline{SD} = \text{GND}$  to disable the amplifier and boost converter and reduce supply current to 0.01 $\mu\text{A}$ .

### SINGLE-ENDED INPUT CONFIGURATION

The LM48580 is compatible with single-ended sources. When configured for single-ended inputs, input capacitors must be used to block and DC component at the input of the device. Figure 5 shows the typical single-ended applications circuit.

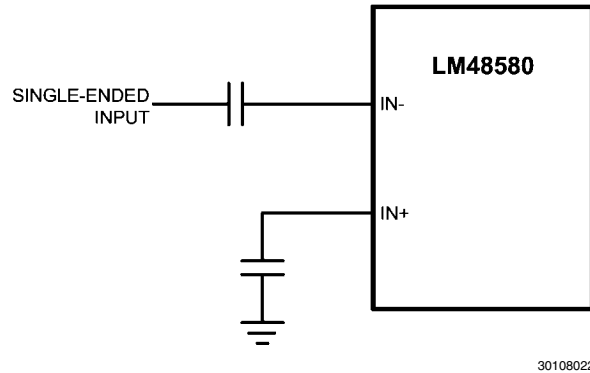


FIGURE 5. Single-Ended Configuration

### PROPER SELECTION OF EXTERNAL COMPONENTS

#### Boost Converter Capacitor Selection

The LM48580 boost converter requires three external capacitors for proper operation: a 1 $\mu\text{F}$  supply bypass capacitor, and 1 $\mu\text{F}$  + 100pF output reservoir capacitors. Place the supply bypass capacitor as close to  $V_{DD}$  as possible. Place the reservoir capacitors as close to VBST and VAMP as possible. Low ESR surface-mount multi-layer ceramic capacitors with X7R or X5R temperature characteristics are recommended. Select output capacitors with voltage rating of 25V or higher. Tantalum, OS-CON and aluminum electrolytic capacitors are not recommended. See Table 4 for suggested capacitor manufacturers.

#### BOOST CONVERTER OUTPUT CAPACITOR SELECTION

##### Inductor Selection

The LM48580 boost converter is designed for use with a 4.7 $\mu\text{H}$  inductor. Table 3 lists various inductors and their manufacturers. Choose an inductor with a saturation current rating greater than the maximum operating peak current of the LM48580 (> 1A). This ensures that the inductor does not saturate, preventing excess efficiency loss, over heating and possible damage to the inductor. Additionally, choose an inductor with the lowest possible DCR (series resistance) to further minimize efficiency losses.

TABLE 3. Recommended Inductors

MANUFACTURER	PART#	INDUCTANCE/ ISAT
Taiyo Yuden	BRL3225T4R7M	4.7 $\mu\text{H}$ /1.1A
Coilcraft	LP3015	4.7 $\mu\text{H}$ /1.1A

#### Diode Selection

Use a Schottkey diode as shown in Figure 1. A 20V diode such as the NSR0520V2T1G from On Semiconductor is recommended. The NSR0520V2T1G is designed to handle a maximum average current of 500mA.

#### PCB LAYOUT GUIDELINES

Minimize trace impedance of the power, ground and all output traces for optimum performance. Voltage loss due to trace resistance between the LM48580 and the load results in decreased output power and efficiency. Trace resistance between the power supply and ground has the same effect as a poorly regulated supply, increased ripple and reduced peak output power. Use wide traces for power supply inputs and amplifier outputs to minimize losses due to trace resistance, as well as route heat away from the device. Proper grounding improves audio performance, minimizes crosstalk between channels and prevents switching noise from interfering with the audio signal. Use of power and ground planes is recommended.

Place all digital components and route digital signal traces as far as possible from analog components and traces. Do not run digital and analog traces in parallel on the same PCB layer. If digital and analog signal lines must cross either over or under each other, ensure that they cross in a perpendicular fashion.

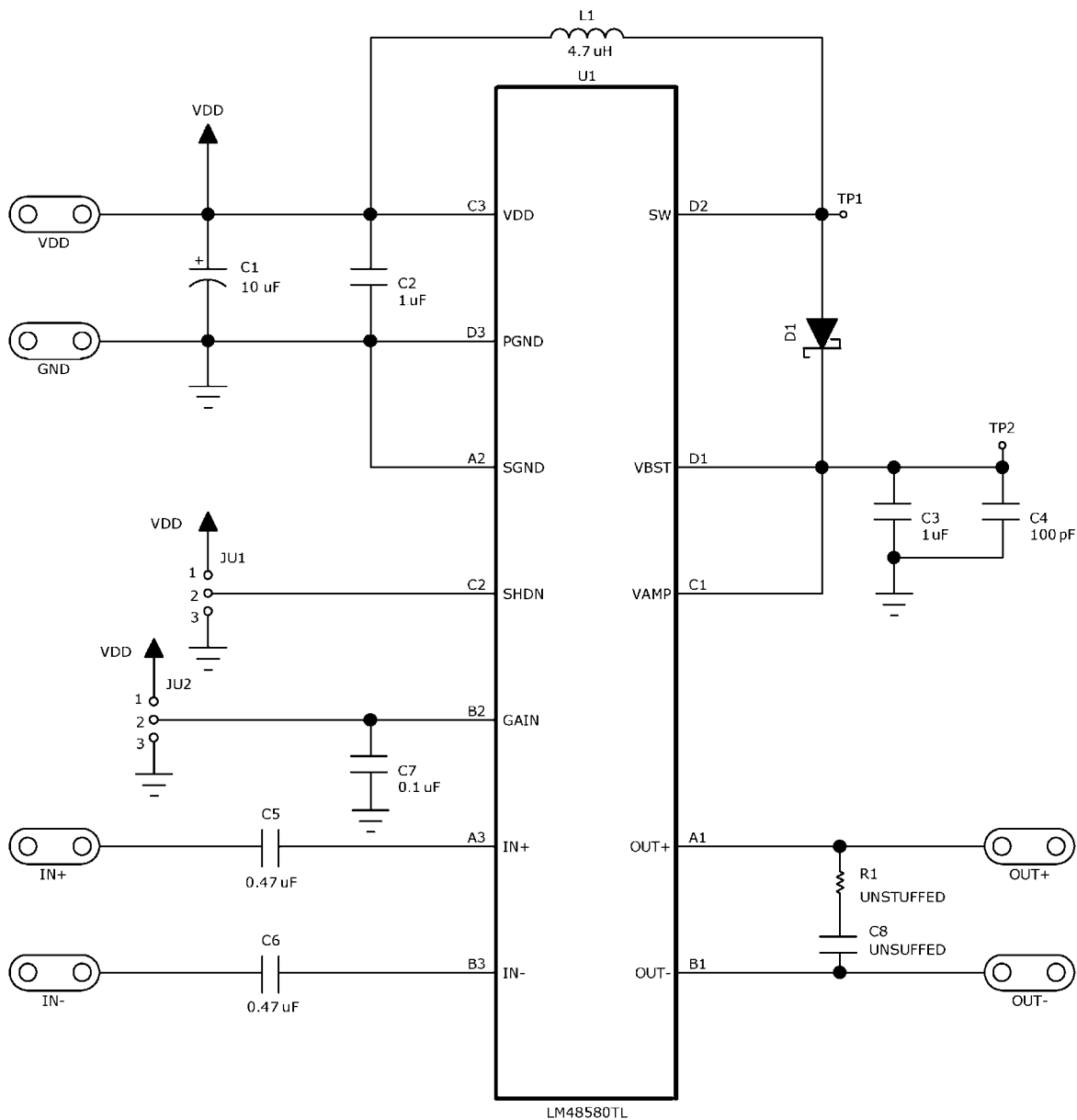
## Demoboard Bill of Materials

TABLE 4. Demoboard Bill of Materials

DESIGNATOR	QUANTITY	DESCRIPTION
C1	1	10 $\mu$ F $\pm$ 10% 16V
		Tantalum Capacitor (B Case)
		AVX TPSB106K016R0800
C2	1	1 $\mu$ F $\pm$ 10% 16V X5R
		Ceramic Capacitor (603)
		Panasonic ECJ-1VB1C105K
		Murata GRM188R61C105KA93D
C3	1	1 $\mu$ F $\pm$ 10% 25V X5R
		Ceramic Capacitor (603)
		Panasonic ECJ-1VB1E105K
		Murata GRM188R61E105KA12D
C4	1	100pF $\pm$ 5% 50V C0G
		Ceramic Capacitor (603)
		Panasonic ECJ-1VC1H101J
		Murata GRM1885C1H101JA01D
C5, C6	2	4.7 $\mu$ F $\pm$ 10% 10V X5R
		Ceramic Capacitor (603)
		Panasonic ECJ-1VB1A474K
		Murata GRM188R61A474KA61D
C7	1	0.1 $\mu$ F $\pm$ 10% 50V X7R
		Ceramic Capacitor (603)
		Panasonic ECJ-1VB1H104K
		Murata GRM188R71H104KA93D
C8	UNSTUFFED	
D1	1	20V, 500mA
		Schottky Diode (SOD-523)
		ON Semiconductor NSR0520V2T1G
L1	1	4.7 $\mu$ H $\pm$ 20% 1.1A Inductor
		Taiyo Yuden BRL3225T4R7M
JU1, JU2	2	3-Pin Header
LM48580TL	1	LM48580TL (12-Bump microSMD)

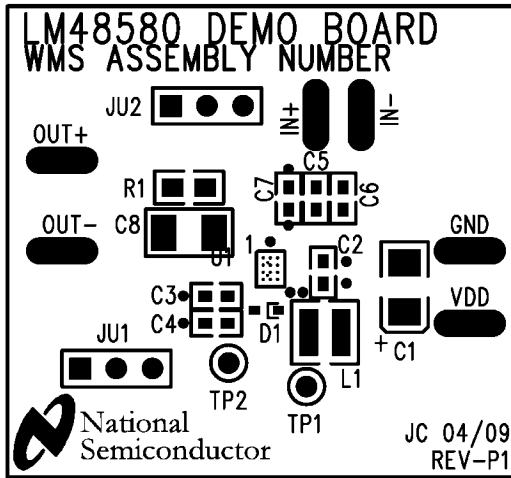
# Demo Board Schematic

LM48580



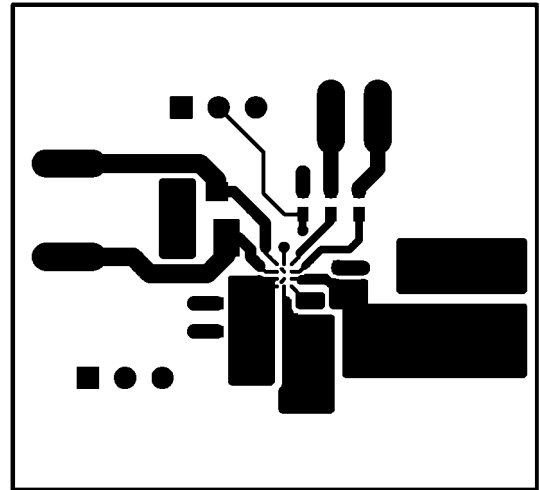
30108006

## PC Board Layout



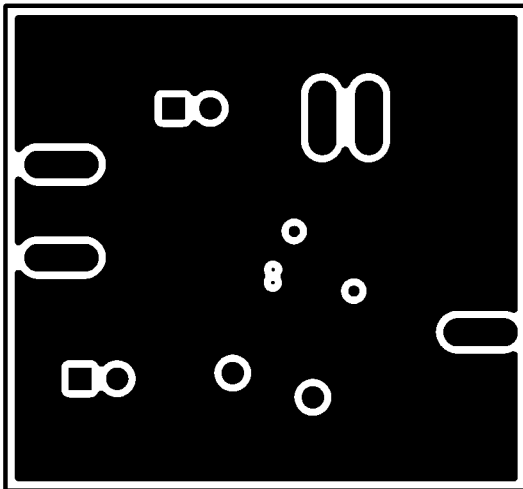
Top Silk Screen

30108008



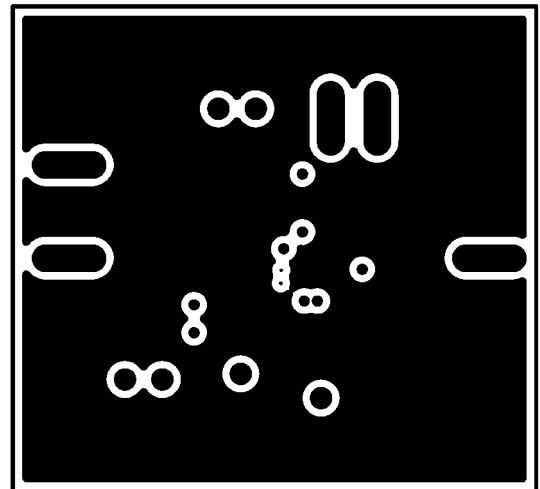
Top Layer

30108007



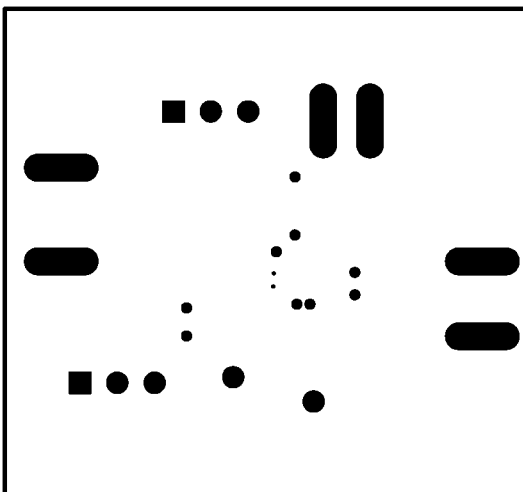
Layer 2

30108003



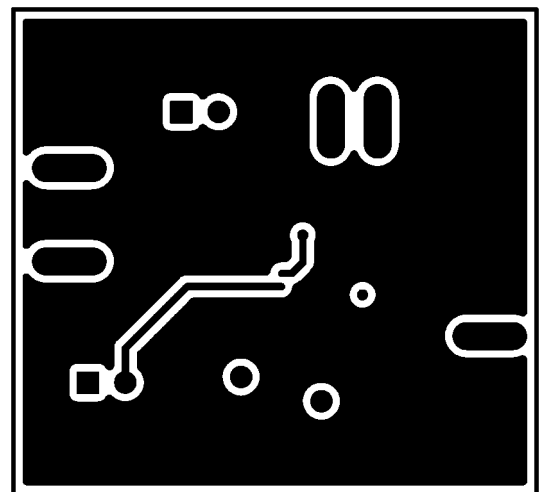
Layer 3

30108005



Bottom Silkscreen

30108002



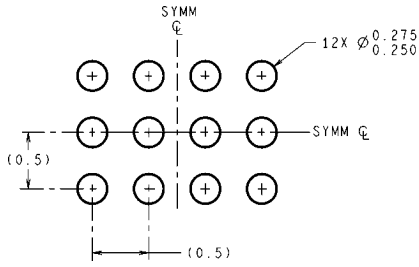
Bottom Layer

30108001

## Revision History

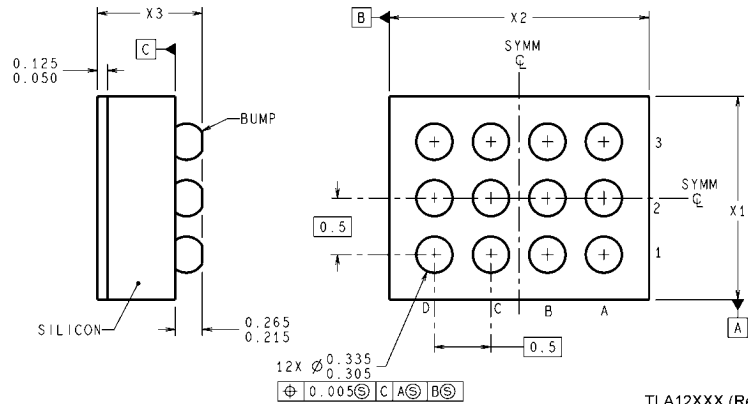
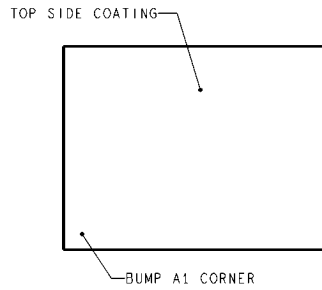
Rev	Date	Description
1.0	02/23/10	Initial released.

# Physical Dimensions inches (millimeters) unless otherwise noted



DIMENSIONS ARE IN MILLIMETERS  
DIMENSIONS IN ( ) FOR REFERENCE ONLY

## LAND PATTERN RECOMMENDATION



TLA12XXX (Rev C)

**Thin micro SMD**  
**Order Number LM48580TL**  
**NS Package Number TLA12Z1A**  
**X1 = 1.463±0.03mm X2 = 1.970±0.03mm X3 = 0.600±0.075mm**

## Notes

## Notes

For more National Semiconductor product information and proven design tools, visit the following Web sites at:  
[www.national.com](http://www.national.com)

Products		Design Support	
Amplifiers	<a href="http://www.national.com/amplifiers">www.national.com/amplifiers</a>	WEBENCH® Tools	<a href="http://www.national.com/webench">www.national.com/webench</a>
Audio	<a href="http://www.national.com/audio">www.national.com/audio</a>	App Notes	<a href="http://www.national.com/appnotes">www.national.com/appnotes</a>
Clock and Timing	<a href="http://www.national.com/timing">www.national.com/timing</a>	Reference Designs	<a href="http://www.national.com/refdesigns">www.national.com/refdesigns</a>
Data Converters	<a href="http://www.national.com/adc">www.national.com/adc</a>	Samples	<a href="http://www.national.com/samples">www.national.com/samples</a>
Interface	<a href="http://www.national.com/interface">www.national.com/interface</a>	Eval Boards	<a href="http://www.national.com/evalboards">www.national.com/evalboards</a>
LVDS	<a href="http://www.national.com/lvds">www.national.com/lvds</a>	Packaging	<a href="http://www.national.com/packaging">www.national.com/packaging</a>
Power Management	<a href="http://www.national.com/power">www.national.com/power</a>	Green Compliance	<a href="http://www.national.com/quality/green">www.national.com/quality/green</a>
Switching Regulators	<a href="http://www.national.com/switchers">www.national.com/switchers</a>	Distributors	<a href="http://www.national.com/contacts">www.national.com/contacts</a>
LDOs	<a href="http://www.national.com/ldo">www.national.com/ldo</a>	Quality and Reliability	<a href="http://www.national.com/quality">www.national.com/quality</a>
LED Lighting	<a href="http://www.national.com/led">www.national.com/led</a>	Feedback/Support	<a href="http://www.national.com/feedback">www.national.com/feedback</a>
Voltage References	<a href="http://www.national.com/vref">www.national.com/vref</a>	Design Made Easy	<a href="http://www.national.com/easy">www.national.com/easy</a>
PowerWise® Solutions	<a href="http://www.national.com/powerwise">www.national.com/powerwise</a>	Applications & Markets	<a href="http://www.national.com/solutions">www.national.com/solutions</a>
Serial Digital Interface (SDI)	<a href="http://www.national.com/sdi">www.national.com/sdi</a>	Mil/Aero	<a href="http://www.national.com/milaero">www.national.com/milaero</a>
Temperature Sensors	<a href="http://www.national.com/tempsensors">www.national.com/tempsensors</a>	SolarMagic™	<a href="http://www.national.com/solarmagic">www.national.com/solarmagic</a>
PLL/VCO	<a href="http://www.national.com/wireless">www.national.com/wireless</a>	PowerWise® Design University	<a href="http://www.national.com/training">www.national.com/training</a>

THE CONTENTS OF THIS DOCUMENT ARE PROVIDED IN CONNECTION WITH NATIONAL SEMICONDUCTOR CORPORATION ("NATIONAL") PRODUCTS. NATIONAL MAKES NO REPRESENTATIONS OR WARRANTIES WITH RESPECT TO THE ACCURACY OR COMPLETENESS OF THE CONTENTS OF THIS PUBLICATION AND RESERVES THE RIGHT TO MAKE CHANGES TO SPECIFICATIONS AND PRODUCT DESCRIPTIONS AT ANY TIME WITHOUT NOTICE. NO LICENSE, WHETHER EXPRESS, IMPLIED, ARISING BY ESTOPPEL OR OTHERWISE, TO ANY INTELLECTUAL PROPERTY RIGHTS IS GRANTED BY THIS DOCUMENT.

TESTING AND OTHER QUALITY CONTROLS ARE USED TO THE EXTENT NATIONAL DEEMS NECESSARY TO SUPPORT NATIONAL'S PRODUCT WARRANTY. EXCEPT WHERE MANDATED BY GOVERNMENT REQUIREMENTS, TESTING OF ALL PARAMETERS OF EACH PRODUCT IS NOT NECESSARILY PERFORMED. NATIONAL ASSUMES NO LIABILITY FOR APPLICATIONS ASSISTANCE OR BUYER PRODUCT DESIGN. BUYERS ARE RESPONSIBLE FOR THEIR PRODUCTS AND APPLICATIONS USING NATIONAL COMPONENTS. PRIOR TO USING OR DISTRIBUTING ANY PRODUCTS THAT INCLUDE NATIONAL COMPONENTS, BUYERS SHOULD PROVIDE ADEQUATE DESIGN, TESTING AND OPERATING SAFEGUARDS.

EXCEPT AS PROVIDED IN NATIONAL'S TERMS AND CONDITIONS OF SALE FOR SUCH PRODUCTS, NATIONAL ASSUMES NO LIABILITY WHATSOEVER, AND NATIONAL DISCLAIMS ANY EXPRESS OR IMPLIED WARRANTY RELATING TO THE SALE AND/OR USE OF NATIONAL PRODUCTS INCLUDING LIABILITY OR WARRANTIES RELATING TO FITNESS FOR A PARTICULAR PURPOSE, MERCHANTABILITY, OR INFRINGEMENT OF ANY PATENT, COPYRIGHT OR OTHER INTELLECTUAL PROPERTY RIGHT.

### LIFE SUPPORT POLICY

**NATIONAL'S PRODUCTS ARE NOT AUTHORIZED FOR USE AS CRITICAL COMPONENTS IN LIFE SUPPORT DEVICES OR SYSTEMS WITHOUT THE EXPRESS PRIOR WRITTEN APPROVAL OF THE CHIEF EXECUTIVE OFFICER AND GENERAL COUNSEL OF NATIONAL SEMICONDUCTOR CORPORATION.** As used herein:

Life support devices or systems are devices which (a) are intended for surgical implant into the body, or (b) support or sustain life and whose failure to perform when properly used in accordance with instructions for use provided in the labeling can be reasonably expected to result in a significant injury to the user. A critical component is any component in a life support device or system whose failure to perform can be reasonably expected to cause the failure of the life support device or system or to affect its safety or effectiveness.

National Semiconductor and the National Semiconductor logo are registered trademarks of National Semiconductor Corporation. All other brand or product names may be trademarks or registered trademarks of their respective holders.

Copyright© 2010 National Semiconductor Corporation

For the most current product information visit us at [www.national.com](http://www.national.com)



**National Semiconductor  
Americas Technical  
Support Center**  
Email: [support@nsc.com](mailto:support@nsc.com)  
Tel: 1-800-272-9959

**National Semiconductor Europe  
Technical Support Center**  
Email: [europe.support@nsc.com](mailto:europe.support@nsc.com)

**National Semiconductor Asia  
Pacific Technical Support Center**  
Email: [ap.support@nsc.com](mailto:ap.support@nsc.com)

**National Semiconductor Japan  
Technical Support Center**  
Email: [jpn.feedback@nsc.com](mailto:jpn.feedback@nsc.com)

## IMPORTANT NOTICE

Texas Instruments Incorporated and its subsidiaries (TI) reserve the right to make corrections, modifications, enhancements, improvements, and other changes to its products and services at any time and to discontinue any product or service without notice. Customers should obtain the latest relevant information before placing orders and should verify that such information is current and complete. All products are sold subject to TI's terms and conditions of sale supplied at the time of order acknowledgment.

TI warrants performance of its hardware products to the specifications applicable at the time of sale in accordance with TI's standard warranty. Testing and other quality control techniques are used to the extent TI deems necessary to support this warranty. Except where mandated by government requirements, testing of all parameters of each product is not necessarily performed.

TI assumes no liability for applications assistance or customer product design. Customers are responsible for their products and applications using TI components. To minimize the risks associated with customer products and applications, customers should provide adequate design and operating safeguards.

TI does not warrant or represent that any license, either express or implied, is granted under any TI patent right, copyright, mask work right, or other TI intellectual property right relating to any combination, machine, or process in which TI products or services are used. Information published by TI regarding third-party products or services does not constitute a license from TI to use such products or services or a warranty or endorsement thereof. Use of such information may require a license from a third party under the patents or other intellectual property of the third party, or a license from TI under the patents or other intellectual property of TI.

Reproduction of TI information in TI data books or data sheets is permissible only if reproduction is without alteration and is accompanied by all associated warranties, conditions, limitations, and notices. Reproduction of this information with alteration is an unfair and deceptive business practice. TI is not responsible or liable for such altered documentation. Information of third parties may be subject to additional restrictions.

Resale of TI products or services with statements different from or beyond the parameters stated by TI for that product or service voids all express and any implied warranties for the associated TI product or service and is an unfair and deceptive business practice. TI is not responsible or liable for any such statements.

TI products are not authorized for use in safety-critical applications (such as life support) where a failure of the TI product would reasonably be expected to cause severe personal injury or death, unless officers of the parties have executed an agreement specifically governing such use. Buyers represent that they have all necessary expertise in the safety and regulatory ramifications of their applications, and acknowledge and agree that they are solely responsible for all legal, regulatory and safety-related requirements concerning their products and any use of TI products in such safety-critical applications, notwithstanding any applications-related information or support that may be provided by TI. Further, Buyers must fully indemnify TI and its representatives against any damages arising out of the use of TI products in such safety-critical applications.

TI products are neither designed nor intended for use in military/aerospace applications or environments unless the TI products are specifically designated by TI as military-grade or "enhanced plastic." Only products designated by TI as military-grade meet military specifications. Buyers acknowledge and agree that any such use of TI products which TI has not designated as military-grade is solely at the Buyer's risk, and that they are solely responsible for compliance with all legal and regulatory requirements in connection with such use.

TI products are neither designed nor intended for use in automotive applications or environments unless the specific TI products are designated by TI as compliant with ISO/TS 16949 requirements. Buyers acknowledge and agree that, if they use any non-designated products in automotive applications, TI will not be responsible for any failure to meet such requirements.

Following are URLs where you can obtain information on other Texas Instruments products and application solutions:

### Products

Audio	<a href="http://www.ti.com/audio">www.ti.com/audio</a>
Amplifiers	<a href="http://amplifier.ti.com">amplifier.ti.com</a>
Data Converters	<a href="http://dataconverter.ti.com">dataconverter.ti.com</a>
DLP® Products	<a href="http://www.dlp.com">www.dlp.com</a>
DSP	<a href="http://dsp.ti.com">dsp.ti.com</a>
Clocks and Timers	<a href="http://www.ti.com/clocks">www.ti.com/clocks</a>
Interface	<a href="http://interface.ti.com">interface.ti.com</a>
Logic	<a href="http://logic.ti.com">logic.ti.com</a>
Power Mgmt	<a href="http://power.ti.com">power.ti.com</a>
Microcontrollers	<a href="http://microcontroller.ti.com">microcontroller.ti.com</a>
RFID	<a href="http://www.ti-rfid.com">www.ti-rfid.com</a>
OMAP Mobile Processors	<a href="http://www.ti.com/omap">www.ti.com/omap</a>
Wireless Connectivity	<a href="http://www.ti.com/wirelessconnectivity">www.ti.com/wirelessconnectivity</a>

### Applications

Communications and Telecom	<a href="http://www.ti.com/communications">www.ti.com/communications</a>
Computers and Peripherals	<a href="http://www.ti.com/computers">www.ti.com/computers</a>
Consumer Electronics	<a href="http://www.ti.com/consumer-apps">www.ti.com/consumer-apps</a>
Energy and Lighting	<a href="http://www.ti.com/energy">www.ti.com/energy</a>
Industrial	<a href="http://www.ti.com/industrial">www.ti.com/industrial</a>
Medical	<a href="http://www.ti.com/medical">www.ti.com/medical</a>
Security	<a href="http://www.ti.com/security">www.ti.com/security</a>
Space, Avionics and Defense	<a href="http://www.ti.com/space-avionics-defense">www.ti.com/space-avionics-defense</a>
Transportation and Automotive	<a href="http://www.ti.com/automotive">www.ti.com/automotive</a>
Video and Imaging	<a href="http://www.ti.com/video">www.ti.com/video</a>

TI E2E Community Home Page

[e2e.ti.com](http://e2e.ti.com)

Mailing Address: Texas Instruments, Post Office Box 655303, Dallas, Texas 75265  
Copyright © 2011, Texas Instruments Incorporated

**[www.BDTIC.com/TI](http://www.BDTIC.com/TI)**