

Understanding Schmitt Triggers

Chris Cockrill

Most CMOS, BiCMOS and TTL devices require fairly fast edges on the high and low transitions on their inputs. If the edges are too slow they can cause excessive current, oscillation and even damage the device. Slow edges are sometimes hard to avoid at power up or when using push button or manual type switches with the large capacitors needed for filtering. Heavily loaded outputs can also cause input rise and fall time to be out of spec for the next part down the line.

On a normal (non-Schmitt trigger) input the part will switch at the same point on the rising edge and falling edge. With a slow rising edge the part will switch at the threshold. When the switch occurs it will require current from V_{CC} . When current is forced from V_{CC} , the V_{CC} level can drop causing the threshold to shift. When the threshold shifts it will cross the input again causing the part to switch again. This can go on and on causing oscillation which can cause excessive current. The same thing can happen if there is noise on the input. The noise can cross the threshold multiple times and cause oscillation or multiple clocking.

The solution to these problems is to use a Schmitt trigger type device to translate the slow or noisy edges into something faster that will meet the input rise and fall specs of the following device. A true Schmitt trigger input will not have rise and fall time limitations.

There are parts that have Schmitt trigger action. This means that they will have a small amount of hysteresis that will help with noise rejection but will still have an input rise and fall time limit. These will usually not have any V_T specs in the datasheet and will have rise and fall time limitations specified for the inputs in the recommended operating conditions.

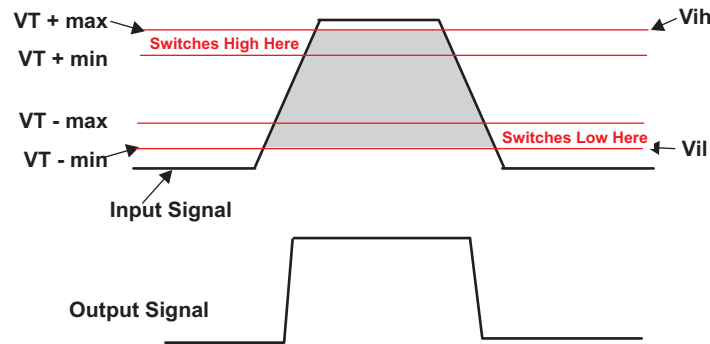
The true Schmitt trigger input has the switching threshold adjusted where the part will switch at a higher point (V_{T+}) on the rising edge and at a lower point (V_{T-}) on the falling edge. The difference in these switching points is called Hysteresis (ΔV_T). Here is an example of Schmitt trigger specs.

PARAMETER	TEST CONDITIONS	V_{CC}	25°C			MIN	MAX	UNIT
			MIN	TYP ⁽¹⁾	MAX			
V_{T+} (Positive-going input threshold voltage)		1.65 V				0.76	1.13	V
		2.3 V				1.08	1.56	
		3 V				1.48	1.92	
		4.5 V				2.19	2.74	
		5.5 V				2.65	3.33	
V_{T-} (Negative-going input threshold voltage)		1.65 V				0.35	0.59	V
		2.3 V				0.56	0.88	
		3 V				0.89	1.2	
		4.5 V				1.51	1.97	
		5.5 V				1.88	2.4	
ΔV_T Hysteresis ($V_{T+} - V_{T-}$)		1.65 V				0.36	0.64	V
		2.3 V				0.45	0.78	
		3 V				0.51	0.83	
		4.5 V				0.58	0.93	
		5.5 V				0.69	1.04	

⁽¹⁾ NOTE REFERENCED IN TABLE, NO NOTE SUBMITTED

The important thing to remember here is that $(V_{t+ \text{ max}}) = V_{ih}$ and $(V_{t- \text{ min}}) = V_{il}$.

In the specs you will see multiple limits related to the Schmitt trigger inputs. All of the limits are important for different reasons. On the input rising edge the part will be guaranteed to switch between $(V_{t+ \text{ min}})$ and $(V_{t+ \text{ max}})$. On the falling edge the part will be guaranteed to switch between $(V_{t- \text{ max}})$ and $(V_{t- \text{ min}})$. The part is guaranteed not to switch between $(V_{t- \text{ max}})$ and $(V_{t+ \text{ min}})$. This is important for noise rejection. The hysteresis is the delta between where the part switches on the rising edge and where it switches on the falling edge. We specify this hysteresis will be at least the min and no more than the max (ΔV_t) spec.



In the figure above, the input levels V_{ih} and V_{il} must be greater than $(V_{t+ \text{ max}})$ and less than $(V_{t- \text{ min}})$ to insure the part will switch. The switching points on the plot above are separated to give a clearer visual picture. In reality the $(V_{t+ \text{ min}})$ and $(V_{t- \text{ max}})$ may overlap.

One common misconception is that the current consumption will be less when switching a slow signal into a Schmitt trigger. This is partly true because the Schmitt trigger prevents oscillation which can draw a lot of current; however you will still see higher I_{cc} current due to the amount of time the input is not at the rail. This is ΔI_{cc} . ΔI_{cc} is where the inputs are not at the rails and upper or lower drive transistors are partially on. The plot below shows I_{cc} across the input voltage sweep.

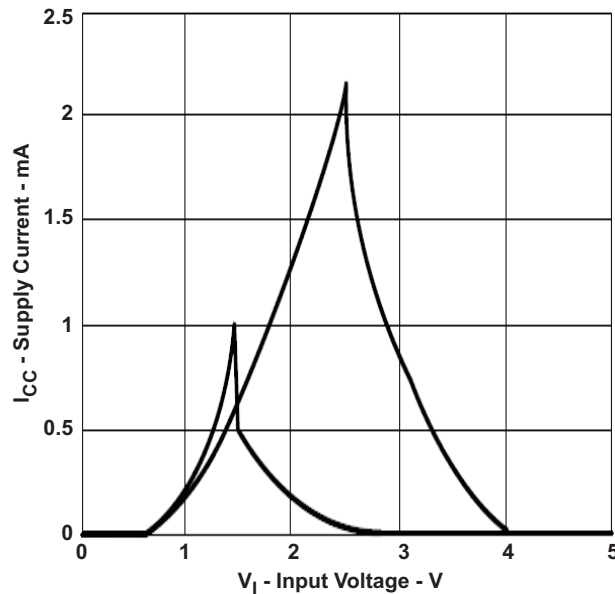


Figure 1. Supply Current as a Function of Input Voltage

Schmitt triggers should be used anytime you need to translate a sign wave into a square wave as shown in this oscillator application. Or they should be used where a slow or noisy input needs to be sped up or cleaned up as in the switch de-bouncer circuit.

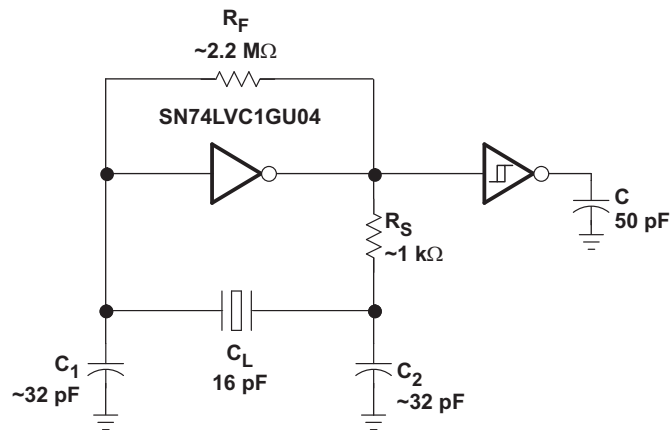


Figure 2. Oscillator Application Using Schmitt Trigger Inverter

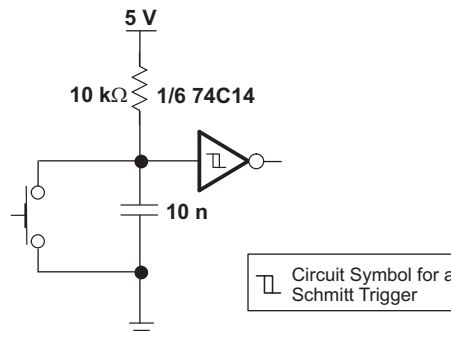
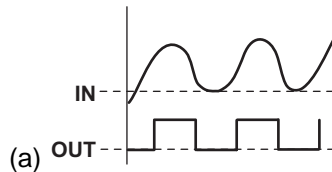


Figure 3. Switch De-bouncer Using Schmitt Trigger Inverter

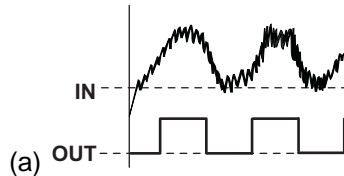
Conclusion

Schmitt triggers should be used any time you need to

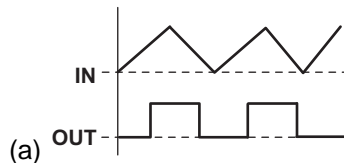
1. Change a sign wave into a square wave.



2. Have noisy signals that need to be cleaned up



3. Have slow edges that need to be converted to fast edges.



We specify the part will switch on the rising edge between ($V_{T+ \text{ min}}$) and ($V_{T+ \text{ max}}$).

We specify the part will switch on the falling edge between ($V_{T- \text{ max}}$) and ($V_{T- \text{ min}}$).

Between ($V_{T+ \text{ min}}$) and ($V_{T- \text{ max}}$) we assure the part will not switch. This can be used for noise rejection. These 2 limits can overlap.

We assure there will be a minimum amount of hysteresis. This is specified as $\Delta V_T \text{ min}$.

$$V_{ih} = (V_{T+ \text{ max}})$$

$$V_{il} = (V_{T- \text{ min}})$$

Texas Instrument Schmitt trigger functions are available in most all technology families from the 30 year old 74XX family to the latest AUP1T family. These two Schmitt Trigger functions are available in most all families.

14 for inverting Schmitt trigger

17 for non-inverting Schmitt trigger

Texas Instrument also has a complete line of little logic products with Schmitt trigger inputs.

Configurations

SN74LVC1G57, SN74LVC1G58, SN74LVC1G97, SN74LVC1G98, SN74LVC1G99 SN74AUP1G57, SN74AUP1G58, SN74AUP1G97, SN74AUP1G98, SN74AUP1G99

Low to High Translators

SN74AUP1T02, SN74AUP1T04, SN74AUP1T08, SN74AUP1T14, SN74AUP1T157, SN74AUP1T158, SN74AUP1T17, SN74AUP1T32, SN74AUP1T86

IMPORTANT NOTICE

Texas Instruments Incorporated and its subsidiaries (TI) reserve the right to make corrections, modifications, enhancements, improvements, and other changes to its products and services at any time and to discontinue any product or service without notice. Customers should obtain the latest relevant information before placing orders and should verify that such information is current and complete. All products are sold subject to TI's terms and conditions of sale supplied at the time of order acknowledgment.

TI warrants performance of its hardware products to the specifications applicable at the time of sale in accordance with TI's standard warranty. Testing and other quality control techniques are used to the extent TI deems necessary to support this warranty. Except where mandated by government requirements, testing of all parameters of each product is not necessarily performed.

TI assumes no liability for applications assistance or customer product design. Customers are responsible for their products and applications using TI components. To minimize the risks associated with customer products and applications, customers should provide adequate design and operating safeguards.

TI does not warrant or represent that any license, either express or implied, is granted under any TI patent right, copyright, mask work right, or other TI intellectual property right relating to any combination, machine, or process in which TI products or services are used. Information published by TI regarding third-party products or services does not constitute a license from TI to use such products or services or a warranty or endorsement thereof. Use of such information may require a license from a third party under the patents or other intellectual property of the third party, or a license from TI under the patents or other intellectual property of TI.

Reproduction of TI information in TI data books or data sheets is permissible only if reproduction is without alteration and is accompanied by all associated warranties, conditions, limitations, and notices. Reproduction of this information with alteration is an unfair and deceptive business practice. TI is not responsible or liable for such altered documentation. Information of third parties may be subject to additional restrictions.

Resale of TI products or services with statements different from or beyond the parameters stated by TI for that product or service voids all express and any implied warranties for the associated TI product or service and is an unfair and deceptive business practice. TI is not responsible or liable for any such statements.

TI products are not authorized for use in safety-critical applications (such as life support) where a failure of the TI product would reasonably be expected to cause severe personal injury or death, unless officers of the parties have executed an agreement specifically governing such use. Buyers represent that they have all necessary expertise in the safety and regulatory ramifications of their applications, and acknowledge and agree that they are solely responsible for all legal, regulatory and safety-related requirements concerning their products and any use of TI products in such safety-critical applications, notwithstanding any applications-related information or support that may be provided by TI. Further, Buyers must fully indemnify TI and its representatives against any damages arising out of the use of TI products in such safety-critical applications.

TI products are neither designed nor intended for use in military/aerospace applications or environments unless the TI products are specifically designated by TI as military-grade or "enhanced plastic." Only products designated by TI as military-grade meet military specifications. Buyers acknowledge and agree that any such use of TI products which TI has not designated as military-grade is solely at the Buyer's risk, and that they are solely responsible for compliance with all legal and regulatory requirements in connection with such use.

TI products are neither designed nor intended for use in automotive applications or environments unless the specific TI products are designated by TI as compliant with ISO/TS 16949 requirements. Buyers acknowledge and agree that, if they use any non-designated products in automotive applications, TI will not be responsible for any failure to meet such requirements.

Following are URLs where you can obtain information on other Texas Instruments products and application solutions:

Products

Audio	www.ti.com/audio
Amplifiers	amplifier.ti.com
Data Converters	dataconverter.ti.com
DLP® Products	www.dlp.com
DSP	dsp.ti.com
Clocks and Timers	www.ti.com/clocks
Interface	interface.ti.com
Logic	logic.ti.com
Power Mgmt	power.ti.com
Microcontrollers	microcontroller.ti.com
RFID	www.ti-rfid.com
OMAP Mobile Processors	www.ti.com/omap
Wireless Connectivity	www.ti.com/wirelessconnectivity

Applications

Communications and Telecom	www.ti.com/communications
Computers and Peripherals	www.ti.com/computers
Consumer Electronics	www.ti.com/consumer-apps
Energy and Lighting	www.ti.com/energy
Industrial	www.ti.com/industrial
Medical	www.ti.com/medical
Security	www.ti.com/security
Space, Avionics and Defense	www.ti.com/space-avionics-defense
Transportation and Automotive	www.ti.com/automotive
Video and Imaging	www.ti.com/video

TI E2E Community Home Page

e2e.ti.com

Mailing Address: Texas Instruments, Post Office Box 655303, Dallas, Texas 75265
Copyright © 2011, Texas Instruments Incorporated