

CCS and IAR Support Packages

MSP430 Tools

Scope

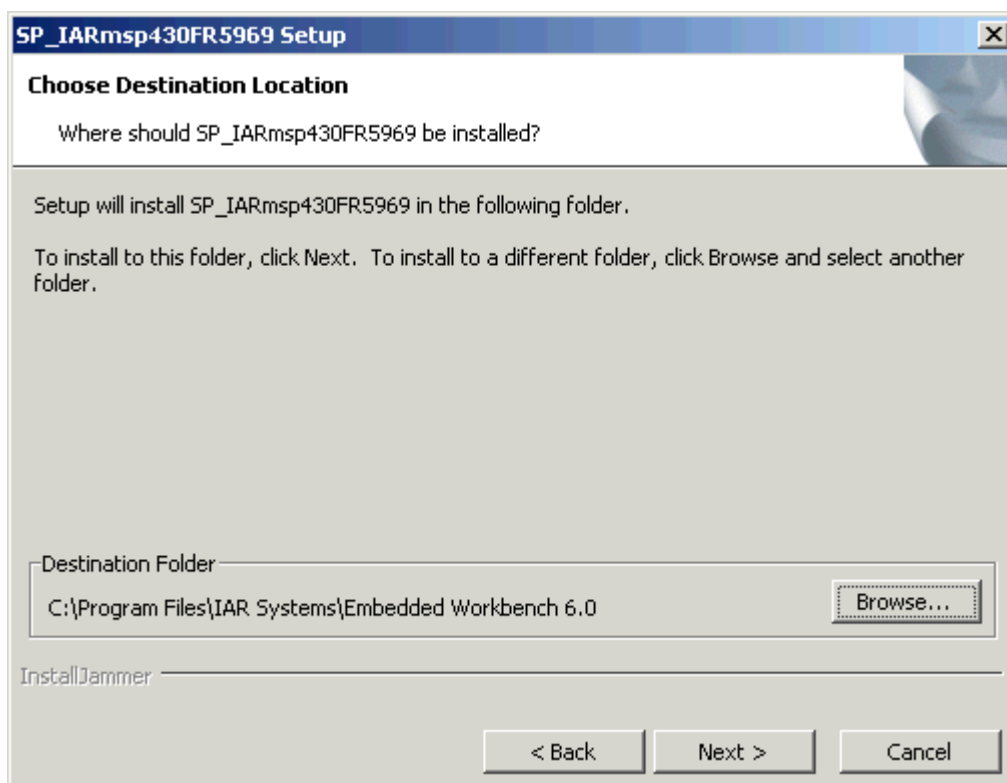
This document describes how to use the Code Composer Studio (CCS) and IAR Kickstart development environments with new MSP430 derivatives that are still in development and were not yet released to the market.

Support Package Installation

Choose a device from the navigation menu on the left side.

Download the latest support package.

Important: Make sure that the support package is compatible to your CCS/IAR version.



Specify the CCS/IAR directory in which the support package should be installed. After the installation has finished, the device appears in the IDE's device list.

Important Notice:

The support package copies an additional MSP430 DLL to the IDE's installation directory and forces the IDE to use this DLL only in combination with the specified device.

This can result in unpredictable behavior, so it is recommended to use an additional IDE installation. For evaluation purposes or in case only small programs will be created, free versions of the IDEs can be downloaded. CCSv5 *Core Edition* (max. 16K of code) and IAR Embedded Workbench *Kickstart* version (max. 4K (CPU) and 8K (CPUX) of C code) are available directly from the TI website:

[CCSv5 Core Edition](#)

[IAR Embedded Workbench Kickstart](#)