

Title
100V 50W DC Module

Sheet 1 of 2

Variant:

Standard
Revision: **V 1.0**

Created by:
DI Gerhard Kreuzer

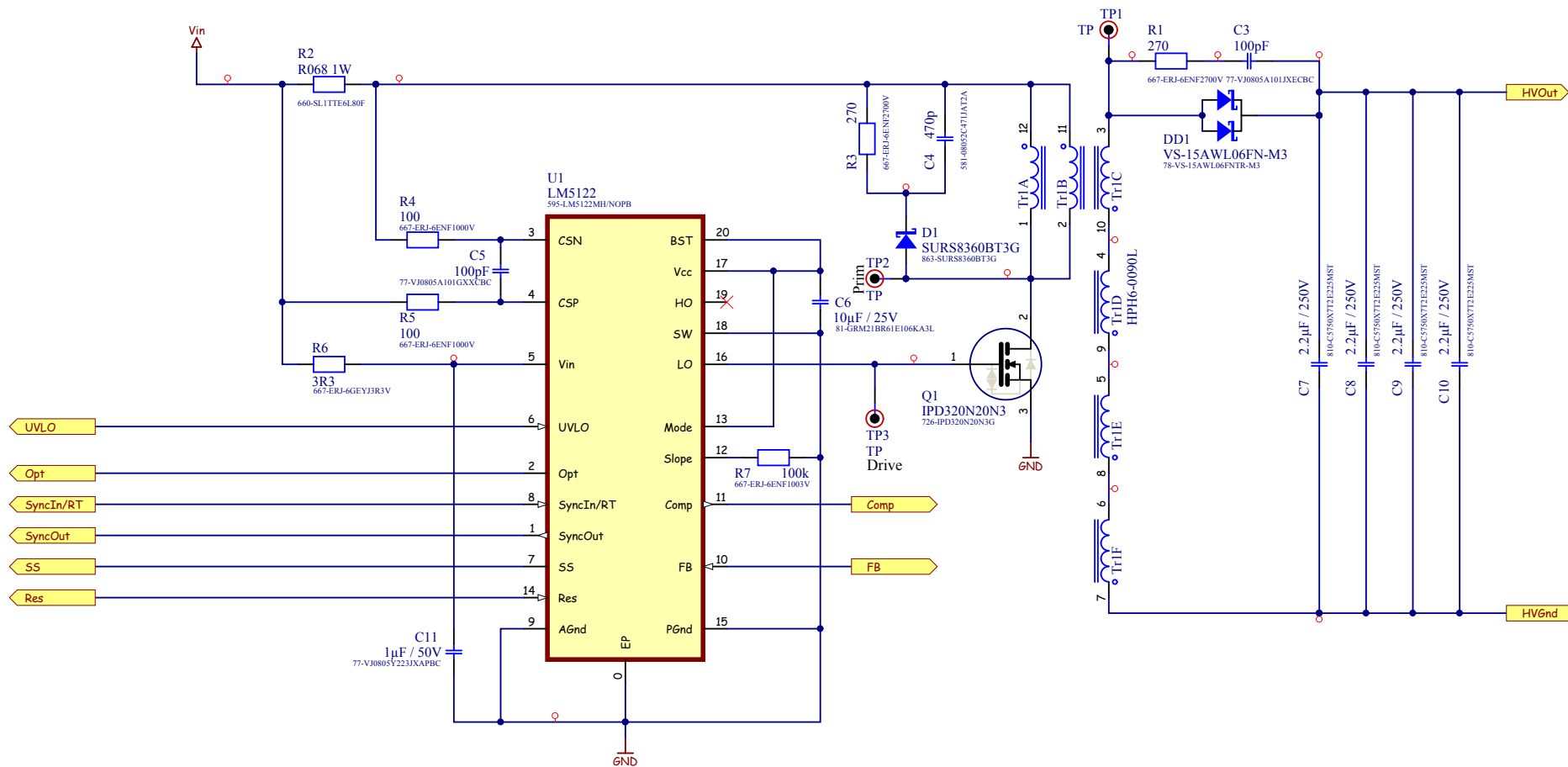
Checked by:
ISHIDDEN=T


Number:
M9032.4.1

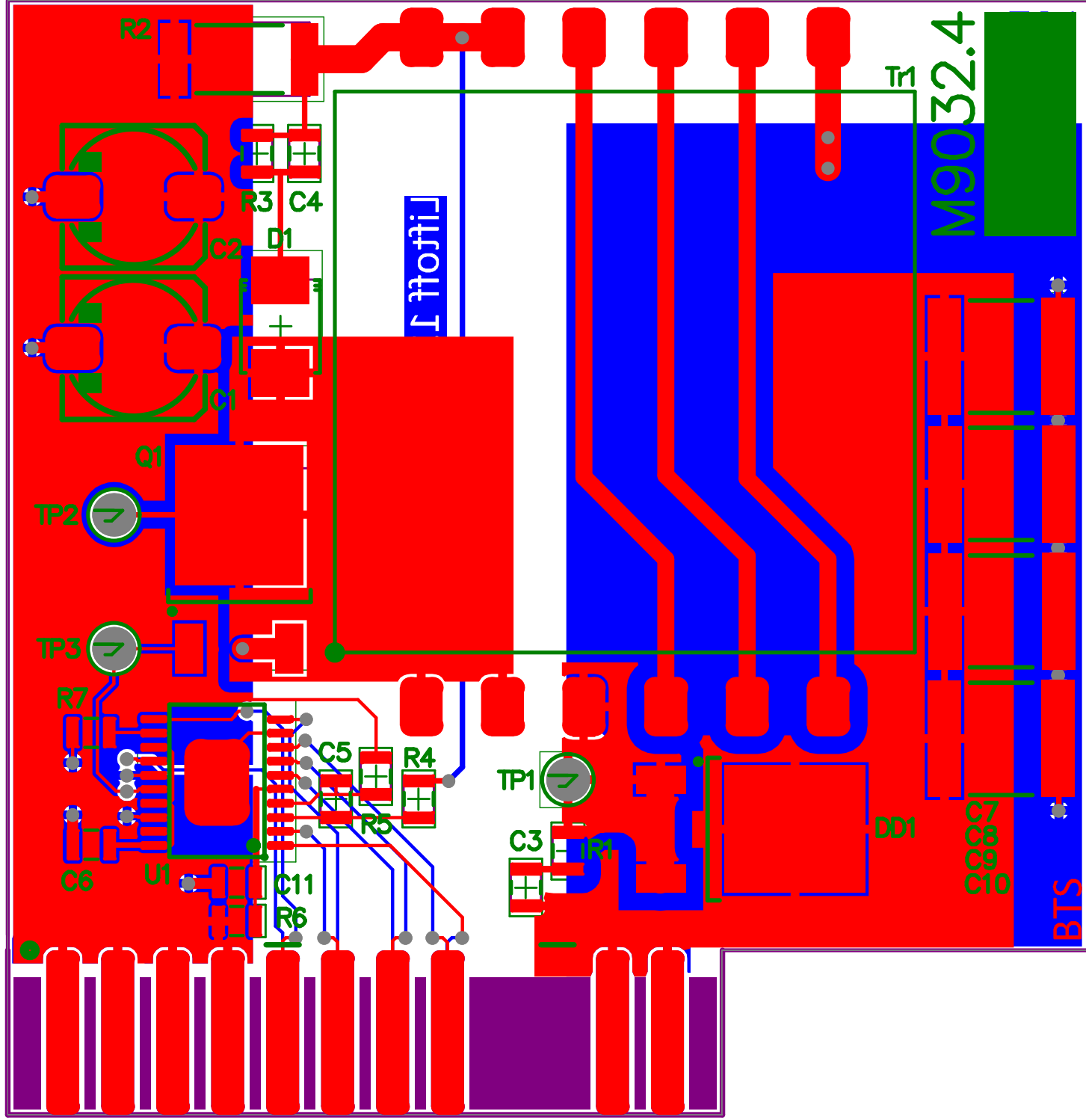
Date: 07.03.2014
Time: 09:19:21

liftoff
www.liftoff.at

Dep.: GeoMonitor
Karlgasse 6
3001 Tullinger Kogel
Austria
Tel: +43 2273 80222



Title 100V 50W isolated Power Module	Variant: Standard Revision: V 1.0	Created by: DI Gerhard Kreuzer Checked by: ISHIDDEN:T File: Flyback Module 100V out.SchDoc	Number: M9032.4.2 Date: 07.03.2014 Time: 09:19:21	 Dep.: GeoMonitor Karlsgasse 6 3001 Tulln bei Krems Austria Tel: +43 2273 80222 www.liftoff.at
--	--	--	---	---



Comment	Description	Designator	Footprint	LibRef	Quantity
33µF / 50V	Alu Elektrolyt Capacitor Low ESR	C1, C2	EEHZA1HXXX Size D8 Panasonic	CERCO	2
100pF	Ceramic Capacitor	C3, C5	SMD C 2012 (0805)	CERCO	2
470p	Ceramic Capacitor	C4	SMD C 2012 (0805)	CERCO	1
10µF / 25V	Ceramic Capacitor	C6	SMD C 2012 (0805)	CERCO	1
2.2µF / 250V	Ceramic Capacitor	C7, C8, C9, C10	CAPC2220(5750)165_N	CERCO	4
1µF / 50V	Ceramic Capacitor	C11	SMD C 2012 (0805)	CERCO	1
Edge Connector	Edge Connector for TE 8-5530843-3 Socket	Conn1	TE 8-5530843-3 Edge 24 p	CON24	1
SURS8360BT3G	Schottky Diode	D1	DIODE SMB	DIODE SCHOTTKY	1
VS-15AWL06FN-M3	Common Cathode	DD1	TO-252_L	Schottky Diode Dual Common Cathode	1
IPD320N20N3	N-Channel Enhancement Mode Field Effect Transistor	Q1	TO-252_L	MOSFET N 2	1
270	Resistor 1/4 Watt	R1, R3	SMD R 2012 (0805)	R	2
R068 1W	Resistor 1W SMD 2512 / 6432	R2	RESC2512(6432)_N	R	1
100	Resistor 1/4 Watt	R4, R5	SMD R 2012 (0805)	R	2
3R3	Resistor 1/4 Watt	R6	SMD R 2012 (0805)	R	1
100k	Resistor 1/4 Watt	R7	SMD R 2012 (0805)	R	1
TP	Testpoint	TP1, TP2, TP3	TP 20-31314x	TP	3
HPHx	Coilcrafts HexaPath Series	Tr1	HP6 HPH6	HexaPath HPH3 HPH4 HPH5 HPH6	1
LM5122	Wide Input Synchronou	U1	HTSSOP20	LM5122	1