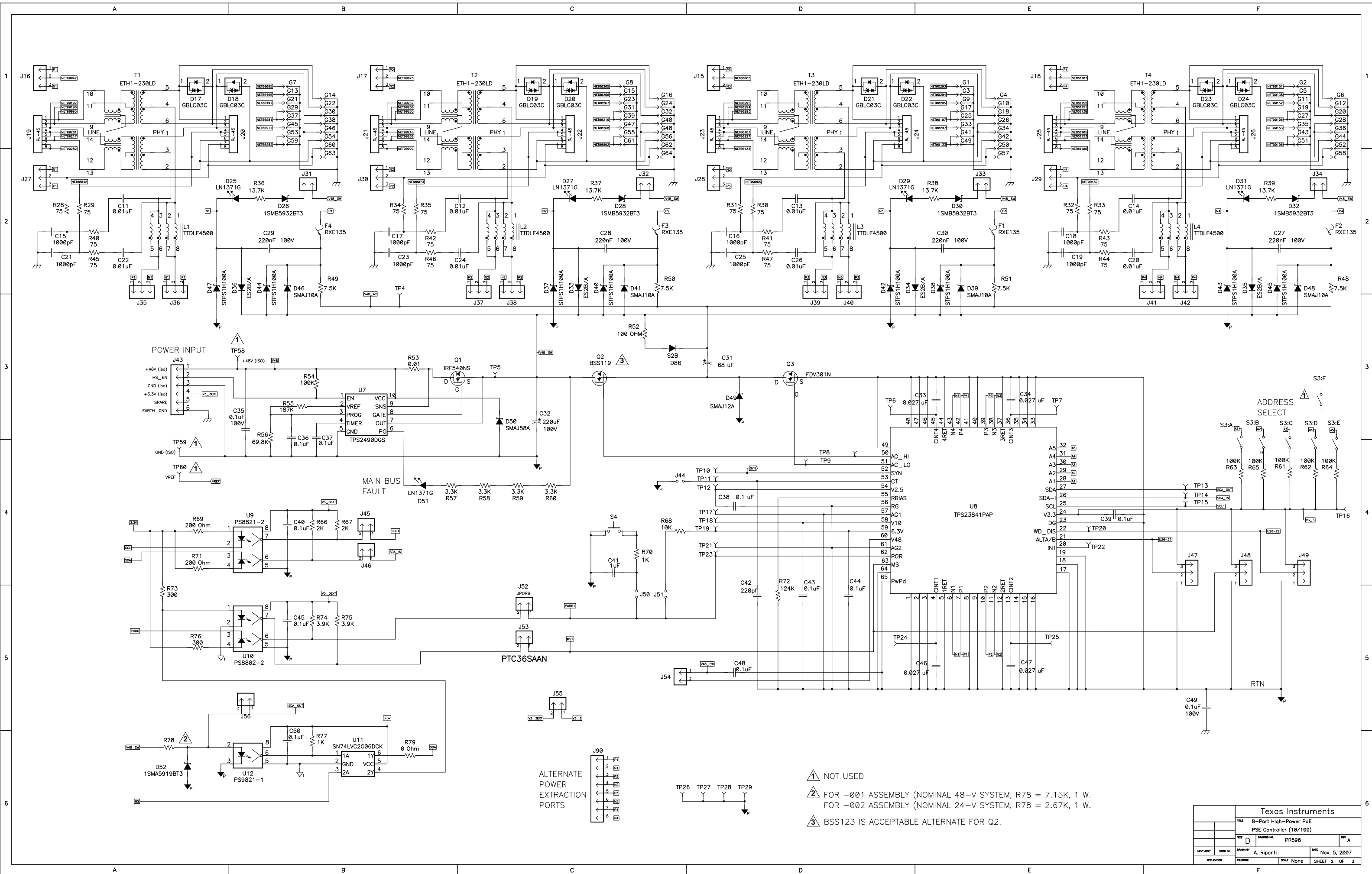
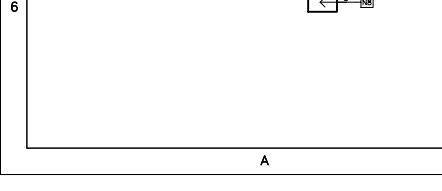
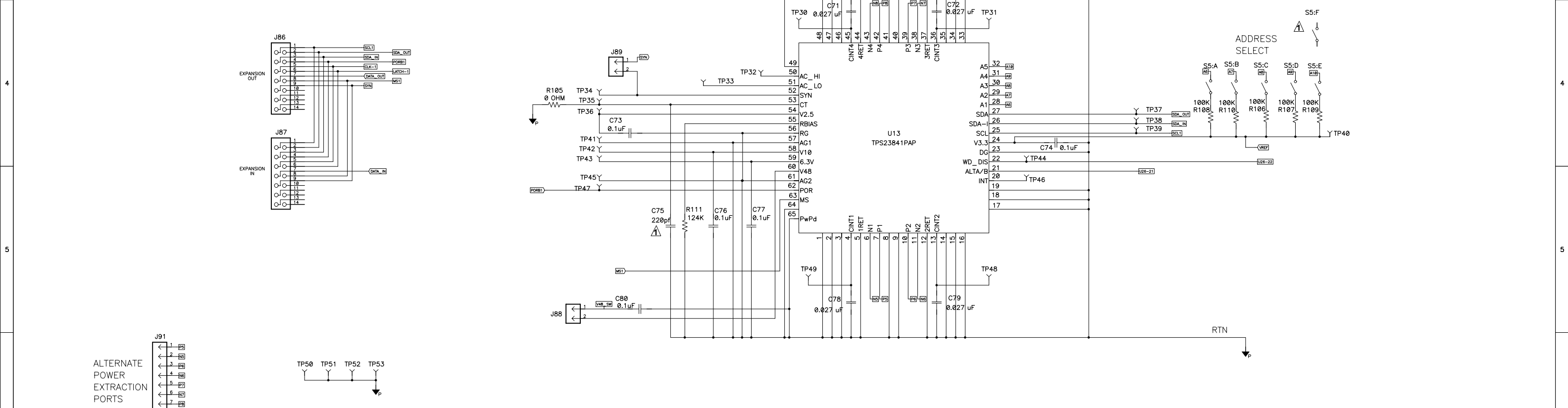
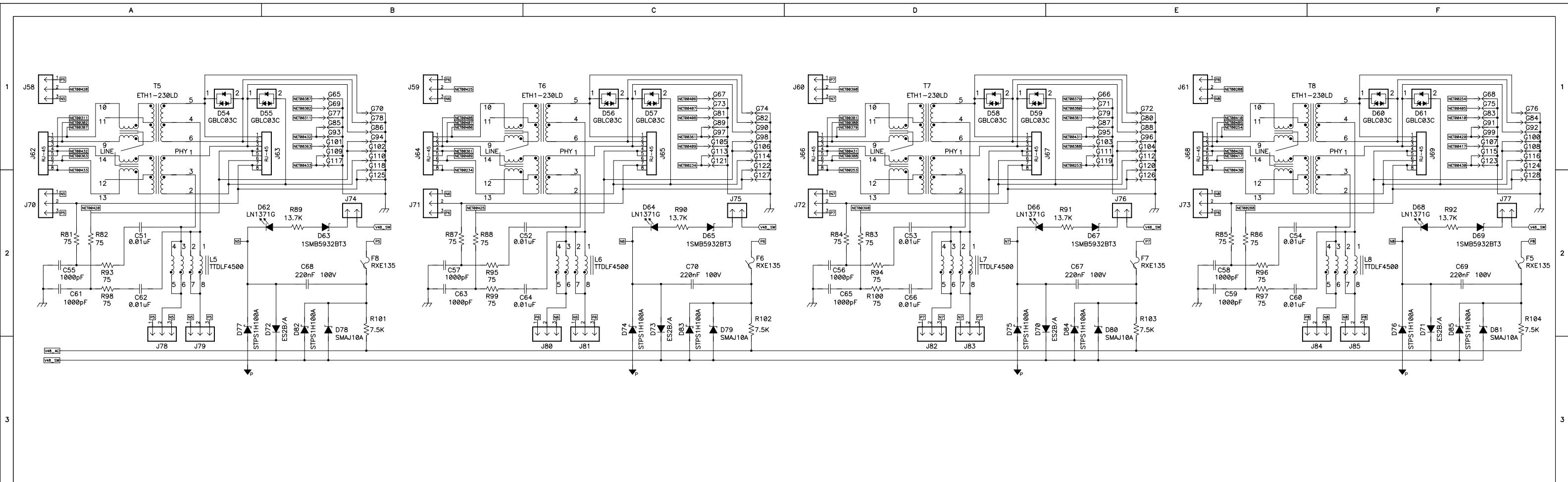


⚠ NOT USED

Texas Instruments			
TITLE		8-Port High-Power PoE PSE Controller (10/100)	
DATE	DRAWING NO.	REV	A
NOV 5 2007	PR598		
DESIGNED BY	A. Riponti	DATE	Nov. 5, 2007
APPLICATION	FILENAME	SCALE	NONE
		SHEET	1 OF 3



Texas Instruments			
TITLE 8-Port High-Power PoE PSE Controller (10/100)			
REV D	DRAWING NO. PR598	REV A	
DESIGNED BY A. Riponti	DATE Nov. 5, 2007		
APPLICATION	FILENAME	SCALE None	SHEET 2 OF 3



NOT USED

Texas Instruments			
TITLE 8-Port High-Power PoE PSE Controller (10/100)			
SIZE D	DRAWING NO. PR598	REV A	
DESIGNED BY A. Riponti	DATE Nov. 5, 2007		
APPLICATION	FILENAME	SCALE None	SHEET 3 OF 3