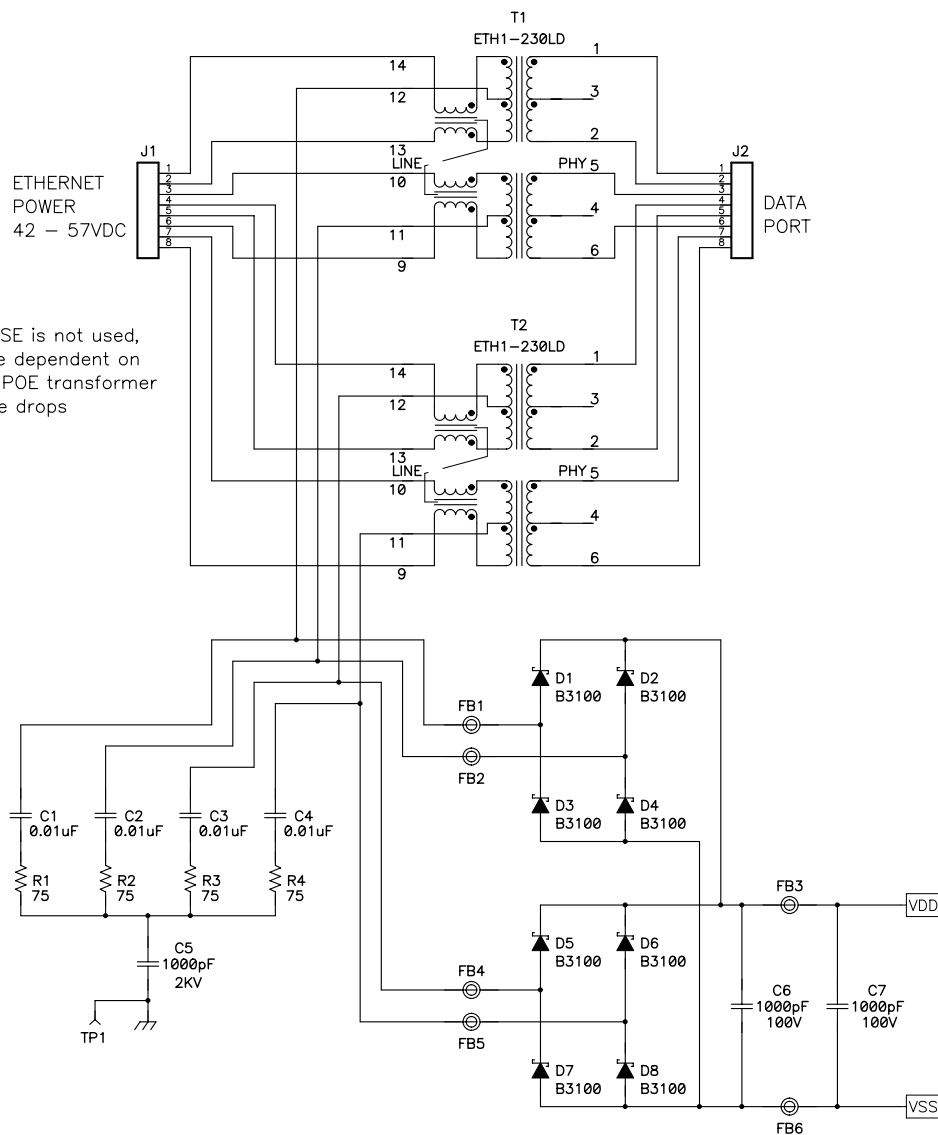
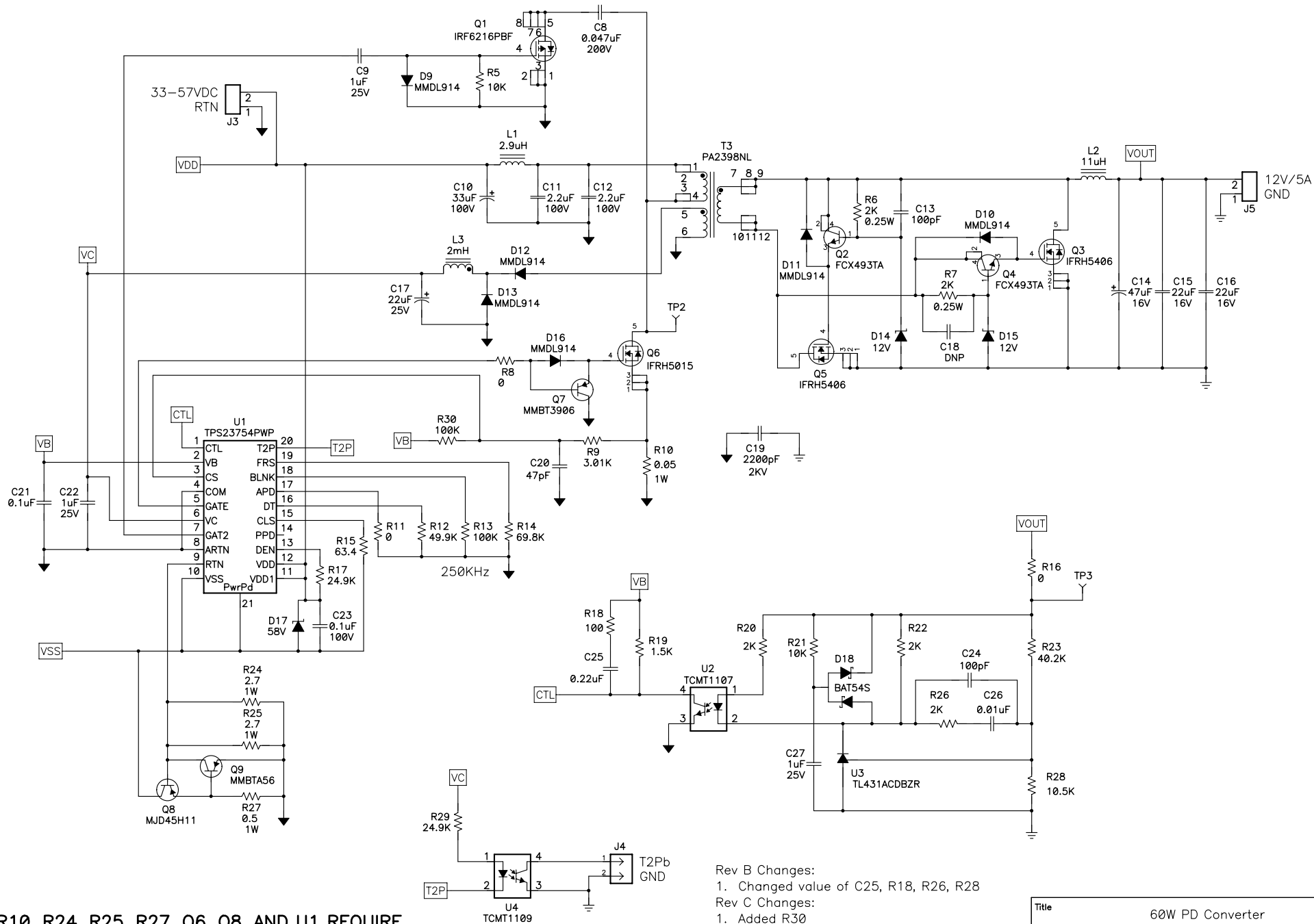


If a current sharing PSE is not used,
current sharing will be dependent on
cable, connector and POE transformer
impedances and diode drops



D1-4 AND D6-9 REQUIRE MAXIMUM
PCB AREA FOR HEATSINKING

Title			
60W PD Converter			
Size	Number	Texas Instruments	Rev
C	PMP5881		D
Date	03/17/11	Drawn by	D Strasser
Filename	PMP5881_Rev_D.sch	Sheet	1 of 2



Rev B Changes:

1. Changed value of C25, R18, R26, R28

Rev C Changes:

1. Added R30

2. Changed value of R10, C25, R18, R24 R25

3. Changed type of D1-4, D6-9

Rev D Changes:

1. Build on PMP5881 Rev C PCB

2. Changed type and value of C17

Title			
60W PD Converter			
Size	Number	Company	Rev
C	PMP5881	Texas Instruments	D
Date	Drawn by		Sheet
03/17/11	D Strasser		2 of 2
Filename	Sheet		
PMP5881_Rev_D.sch	2 of 2		