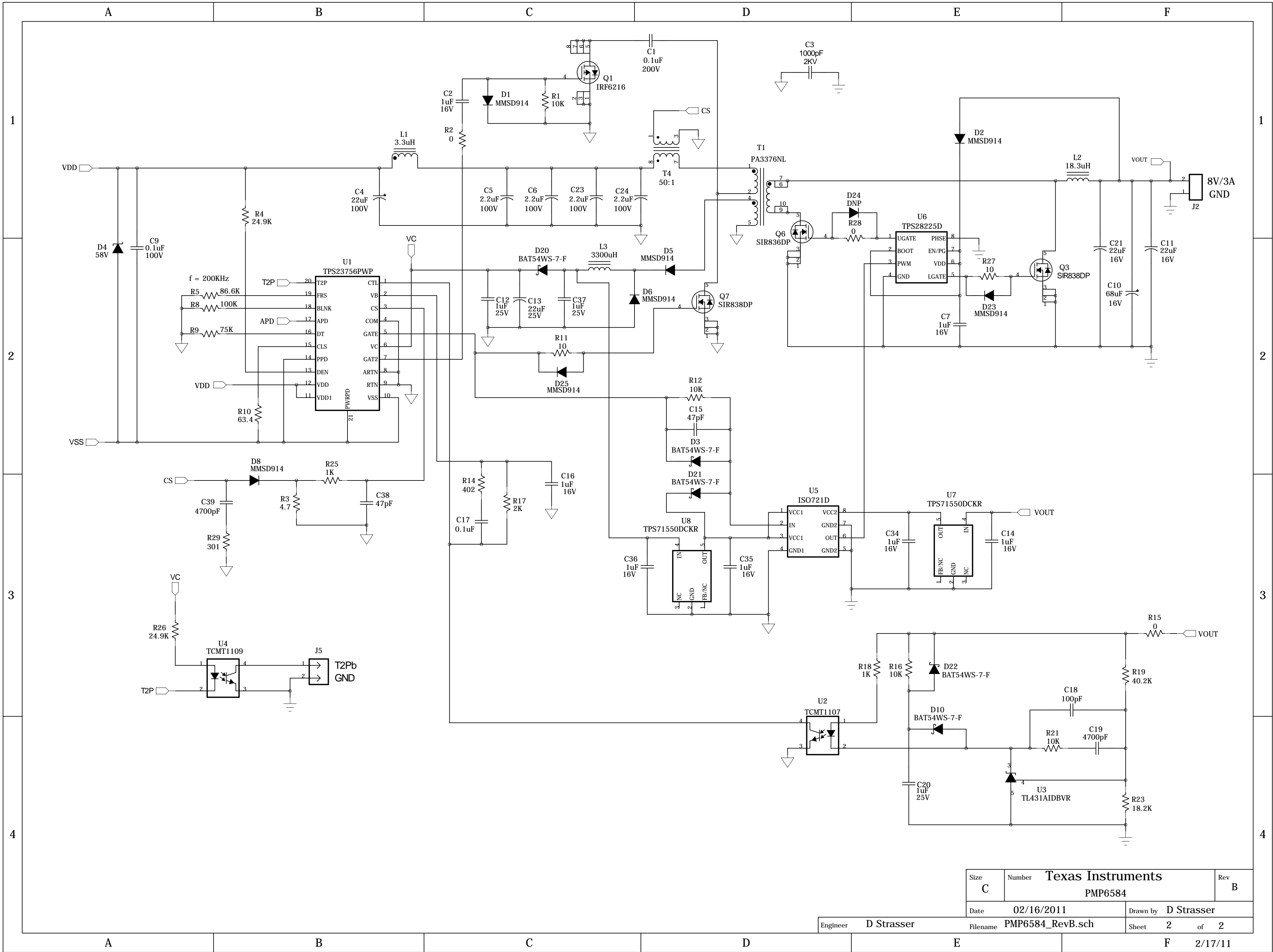


Rev B Changes:

1. Changed value of C1, C17, C19, R3, R9, R14, R17, R18, R23, R25
2. Added C39, D23, D24, D25, R27, R28, R29
3. Changed type and size of L2, L3

				Texas Instruments				
R3, R9, R14, R17, R18, R23, R25 R28, R29				Title Wide Input, High Power PoE Converter				
				Size C	Number PMP6584			Rev B
				Date 02/16/2011			Drawn by D Strasser	
				Engineer D Strasser			Filename PMP6584_RevB.sch	
				Sheet 1		of 2		
				E		F		
				2/17/11				



Size C	Number 02/16/2011	Texas Instruments PMP6584		Rev B
Date	02/16/2011	Drawn by	D Strasser	
Engineer	D Strasser	Filename	PMP6584_RevB.sch	Sheet 2 of 2