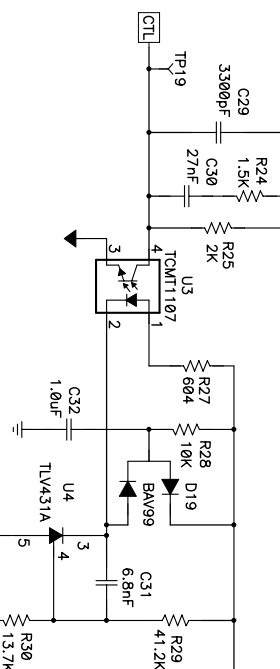


- NOTES:
1. Build on HPA420A PCB using HPA420D BOM
 2. T2 changed to JA4456-DL
 3. Q1 changed to S1R422DP (Rev B)
 4. D100 added to PCB
 5. R100 added to PCB, change connection to C8-2 (Rev B)
 6. D15 changed to MUR5120T3 (SMB package)
 7. R12 changed to 1206 package
 8. R17 changed to 22.1k (Rev B), R21 changed to 332ohm
 9. R20 changed to 4.7ohm, R24 changed to 1.5k
 10. C31 changed to 6.8nF
 11. C100 (330pF) may be required for some applications



Title TEXAS INSTRUMENTS TPS2375/54 Synchronous Flyback		
Size C	Number PMP6672	Rev B
Date Tue Nov 15, 2011	Drawn by E. Wright	
Filename PMP6672_RevB.SCH	Sheet 1	of 1