

Simplifying Stability Checks

John Stevens

PMP - DC/DC Controllers

ABSTRACT

This application report explains a method for verifying relative stability of a circuit by showing the relationship between phase margin in an AC loop response and ringing in a load-step analysis.

Contents

1	What is Stability and Phase Margin?	1
2	What is Ringing and How Does it Relate to Stability?	2
2.1	Example Test Setup	4
2.2	Examples of Load Step Analysis	4
2.3	TPS5430 Laboratory Tests	6
3	Conclusion	7

List of Figures

1	Calculating Phase Margin From a Frequency Response Plot	2
2	Comparison of Load Step Responses for Varying Phase Margin	3
3	Example Test Setup for Finding Step-Response	4
4	Load Step With Phase Margin = 45.7° (1 Peak)	4
5	Load Step With Phase Margin = 40.61° (2 Peaks)	5
6	Load Step With Phase Margin = 34.72° (3 Peaks)	5
7	Loop Response of TPS5430 Tested in Laboratory (Phase Margin = 55°)	6
8	Load-Step Response of TPS5430 Tested in Laboratory (Phase Margin = 55°)	6

List of Tables

1	Phase Margin vs Ringing in Load-Step Response	3
---	---	---

1 What is Stability and Phase Margin?

When discussing control systems, stability is a term referring to the ability of a controller to regain a constant or decaying output after an input or load disturbance, such as a step function. Stability is an important criterion for control circuits because they have inherent delay in the feedback loop(s). If the output signal lags one full wavelength, it becomes superimposed on the input signal of the controller and the circuit becomes unstable and oscillates.

Phase margin (PM) is a measure of relative stability, in degrees, that indicates the likelihood of a closed-loop control system to oscillate when given a disturbance such as a step function. For systems with a negative angle phase response, the PM is the difference between -180° (due to the inverting nature of most amplifiers) and the phase angle of the frequency response at the same frequency where the magnitude response is 1 or 0 db. For systems with a positive phase response, the phase margin is merely the phase itself at the frequency where the magnitude response is 1 or 0 db. A positive PM technically yields a *stable system* whereas a negative PM yields an unstable system. However, a system with a 3° PM, for example, is not necessarily stable because practical factors make such a small degree of margin unreliable. Thus, a PM of about 45° is considered generally acceptable, but this can vary based on the designer's preference. This classic method of finding the phase margin can be observed in [Figure 1](#).

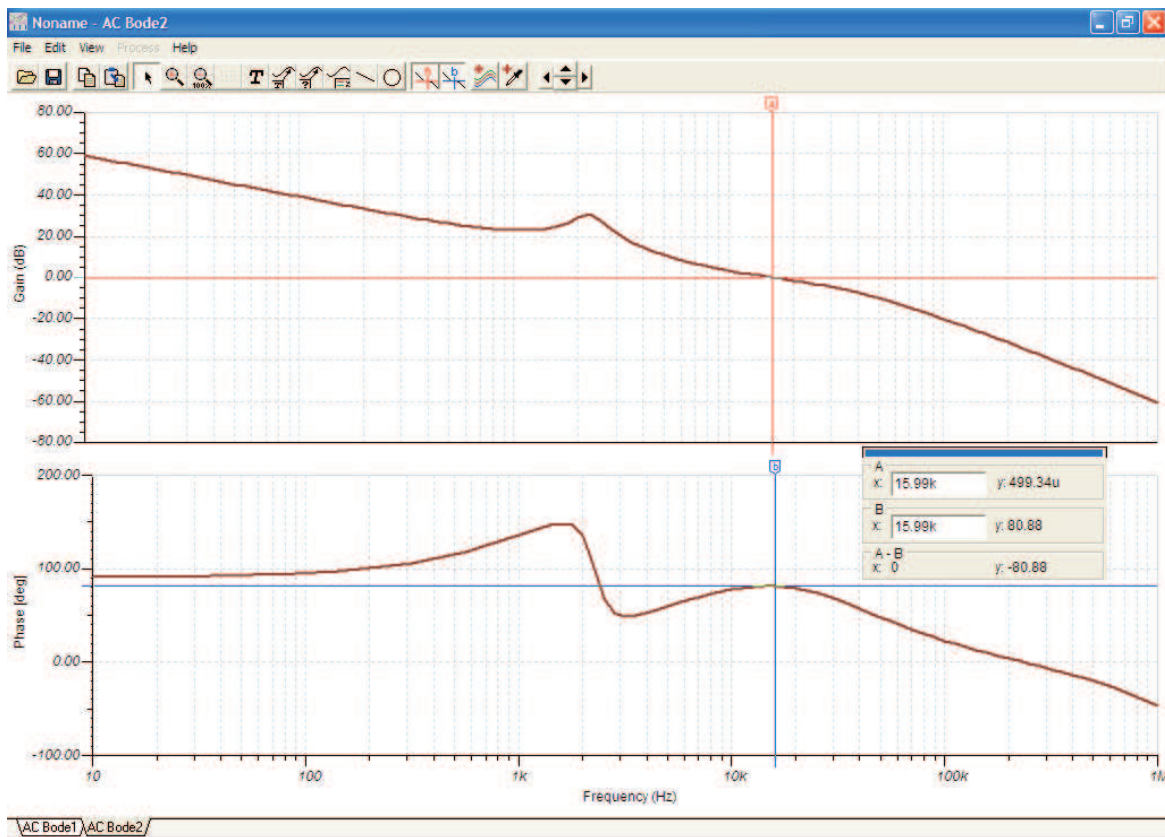


Figure 1. Calculating Phase Margin From a Frequency Response Plot

As can be seen in the plot of Figure 1, an AC response, (Magnitude on top and Phase underneath), is given. The Magnitude Response plot is shown to be 0 db at 15.99 kHz. The phase at 15.99 kHz is 80.88°. Thus, the phase margin of this system is 80.88°.

Although this method is acceptable for simulated devices, in real systems it creates many problems. For example, many devices with control systems cannot tolerate the wide range of frequencies necessary for such an analysis. Further, to conduct such a test requires an isolation of the feedback loop which in some cases is difficult or impossible. Although tools such as network analyzers can test stability directly, the cost sometimes restricts their availability. Therefore, an alternate method to test stability using a common laboratory oscilloscope is now considered.

2 What is Ringing and How Does it Relate to Stability?

Ringing is the unwanted oscillation seen in a voltage or current signal when the input or load is changed very quickly. If the controller cannot correct the output properly, overshoot and/or undershoot can occur, until it is damped out according to the damping factor of the system. In the extreme case, the system becomes unstable and the output oscillates indefinitely at the frequency where the gain = 1 and phase margin is 0 dB. In a circuit with a positive phase margin, the oscillations decay and are limited in number. Considering this, it can be stated that fewer bumps (peaks) or ripples in the transient load-step response correspond to more damping and a higher phase margin. In Figure 2, this relationship can be observed.

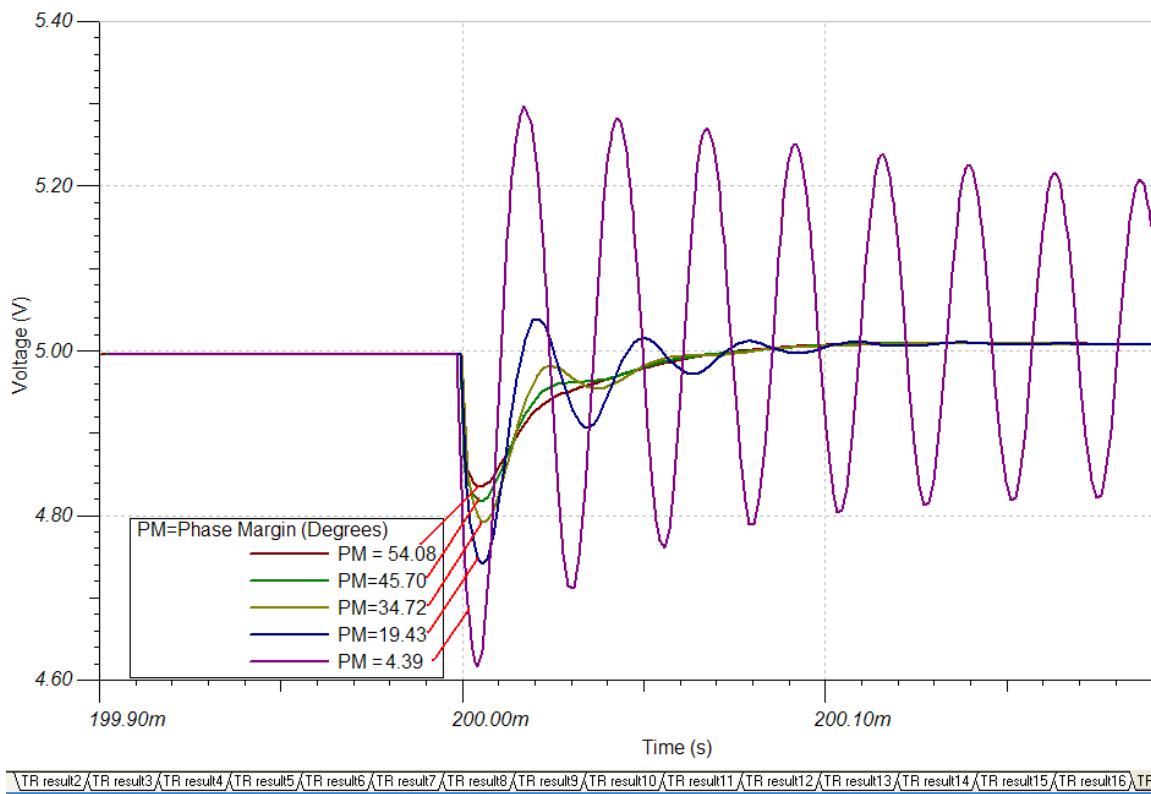


Figure 2. Comparison of Load Step Responses for Varying Phase Margin

As [Figure 2](#) illustrates, the response with the highest PM, 54.08°, (in brown), damps the fastest. As PM decreases, the number of oscillatory peaks increases until eventually, at very low PM, the circuit is in lightly damped oscillation. For a quick reference, see [Table 1](#).

Table 1. Phase Margin vs Ringing in Load-Step Response

Phase Margin (Degrees)	Ringing (Bumps)
80.88	0
60.75	0
57.64	0
54.08	0
50.16	1
45.7	1.5
40.61	2
34.72	3
27.78	4
19.43	6
9.09	17

2.1 Example Test Setup

The device under test (DUT) can be set up as seen in [Figure 3](#)

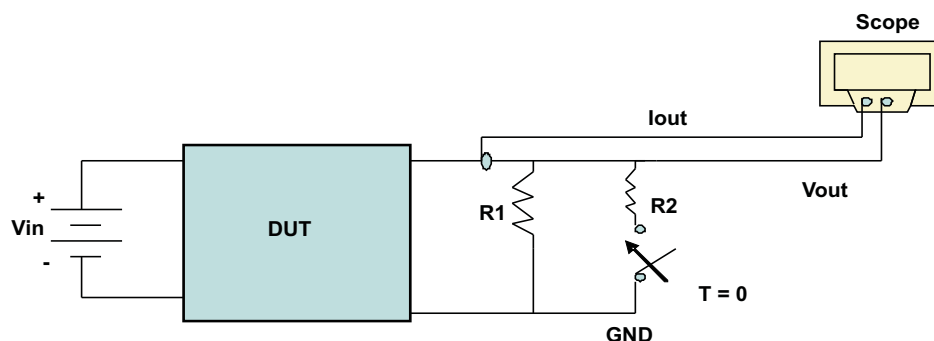


Figure 3. Example Test Setup for Finding Step-Response

2.2 Examples of Load Step Analysis

For a better definition of what an oscillatory *bump* or peak is, see [Figure 4](#), [Figure 5](#), and [Figure 6](#).

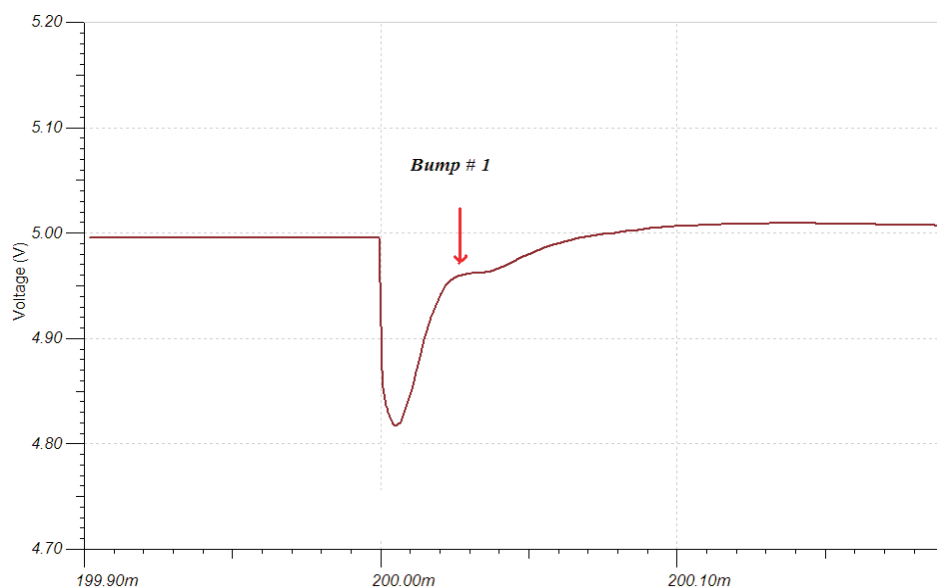


Figure 4. Load Step With Phase Margin = 45.7° (1 Peak)

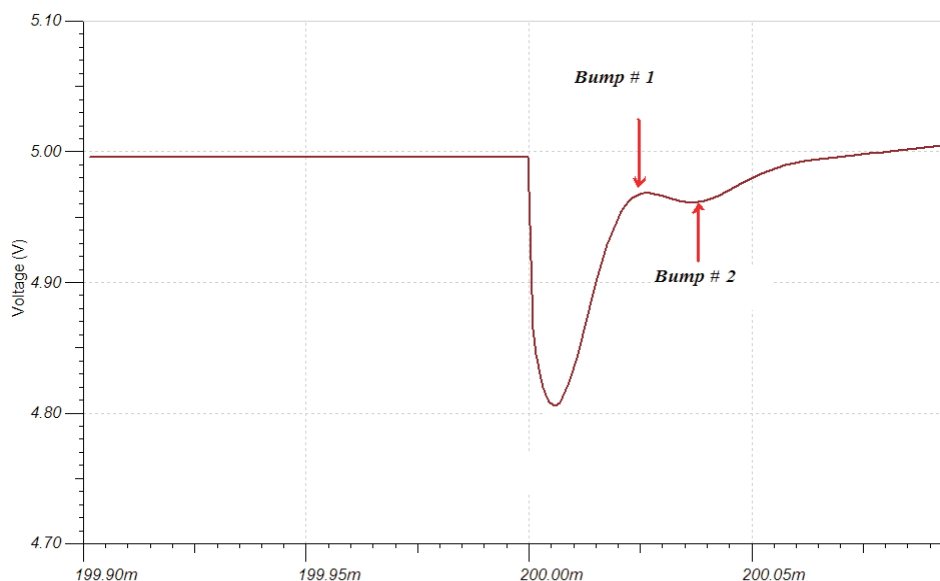


Figure 5. Load Step With Phase Margin = 40.61° (2 Peaks)

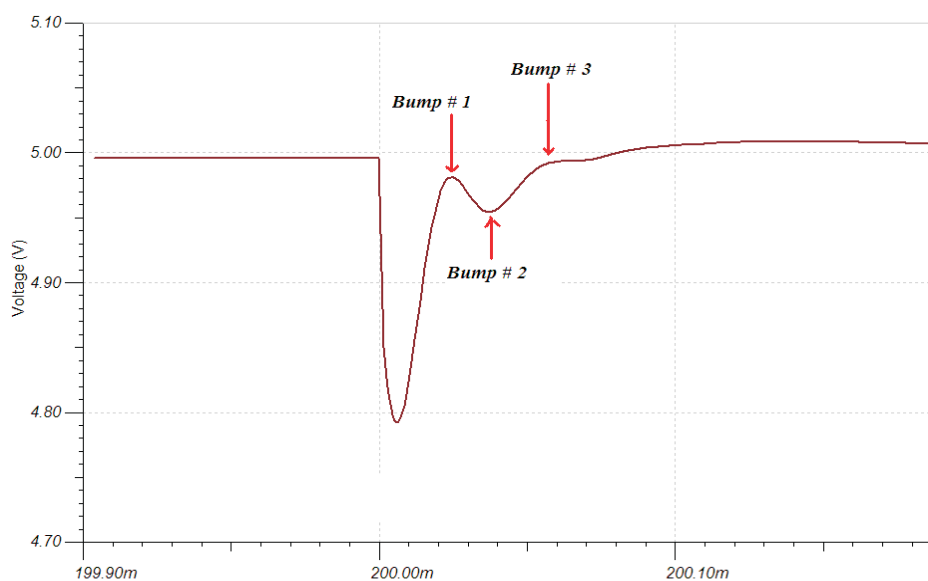


Figure 6. Load Step With Phase Margin = 34.72° (3 Peaks)

2.3 TPS5430 Laboratory Tests

To verify that these simulations produce realistic results, the TPS5430 was tested in a laboratory.

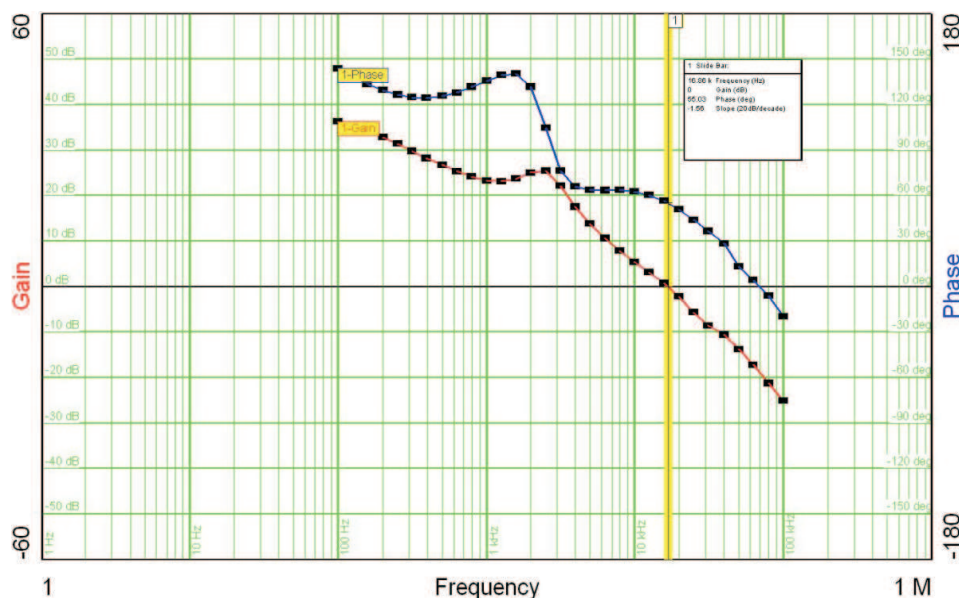
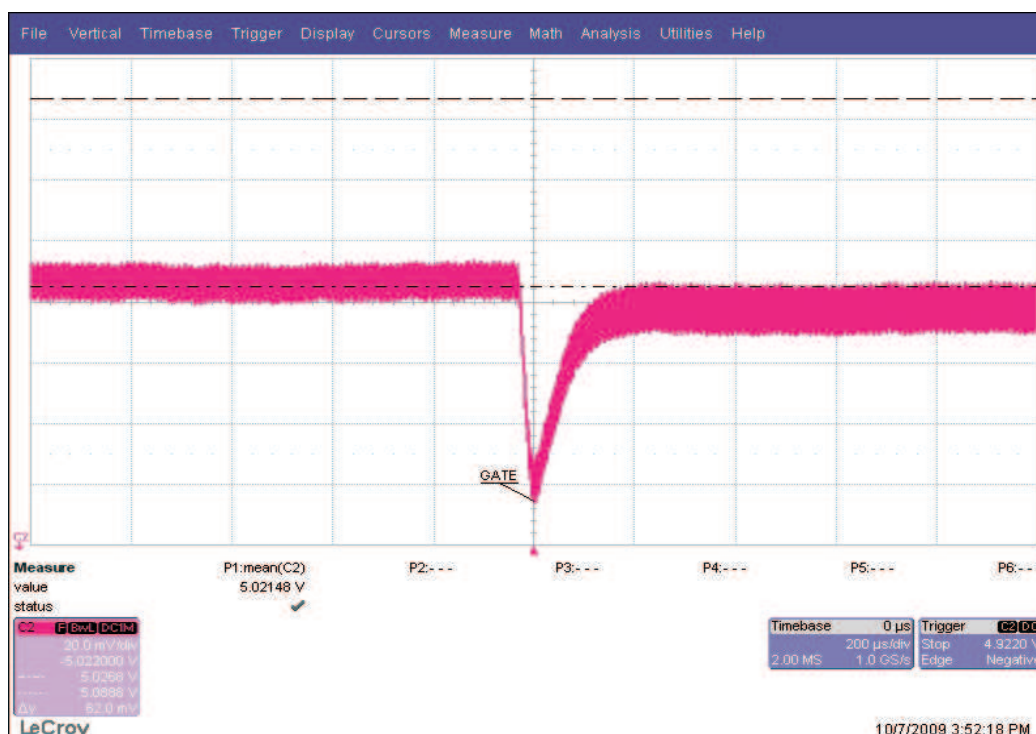


Figure 7. Loop Response of TPS5430 Tested in Laboratory (Phase Margin = 55°)



NOTE: Uses a 50% Load Step at 1-10 μ s Slew Rate

Figure 8. Load-Step Response of TPS5430 Tested in Laboratory (Phase Margin = 55°)

In the laboratory test of the load-step response in [Figure 8](#), there are no oscillatory peaks. At a phase margin of 55°, this result matches what is found in [Table 1](#).

3 Conclusion

This application report explains the link between the load-step response and the loop response of a given circuit. Based on this relationship, this document provides details to make an estimate at relative stability based on phase margin. The designer must always consider that this measurement requires some interpretation of load-step response and that these measurements can vary.

Revision History

Changes from Original (December, 2009) to A Revision	Page
<ul style="list-style-type: none"> Corrected notation in Figure 2 and related description for better clarification 	2

NOTE: Page numbers for previous revisions may differ from page numbers in the current version.

IMPORTANT NOTICE

Texas Instruments Incorporated and its subsidiaries (TI) reserve the right to make corrections, modifications, enhancements, improvements, and other changes to its products and services at any time and to discontinue any product or service without notice. Customers should obtain the latest relevant information before placing orders and should verify that such information is current and complete. All products are sold subject to TI's terms and conditions of sale supplied at the time of order acknowledgment.

TI warrants performance of its hardware products to the specifications applicable at the time of sale in accordance with TI's standard warranty. Testing and other quality control techniques are used to the extent TI deems necessary to support this warranty. Except where mandated by government requirements, testing of all parameters of each product is not necessarily performed.

TI assumes no liability for applications assistance or customer product design. Customers are responsible for their products and applications using TI components. To minimize the risks associated with customer products and applications, customers should provide adequate design and operating safeguards.

TI does not warrant or represent that any license, either express or implied, is granted under any TI patent right, copyright, mask work right, or other TI intellectual property right relating to any combination, machine, or process in which TI products or services are used. Information published by TI regarding third-party products or services does not constitute a license from TI to use such products or services or a warranty or endorsement thereof. Use of such information may require a license from a third party under the patents or other intellectual property of the third party, or a license from TI under the patents or other intellectual property of TI.

Reproduction of TI information in TI data books or data sheets is permissible only if reproduction is without alteration and is accompanied by all associated warranties, conditions, limitations, and notices. Reproduction of this information with alteration is an unfair and deceptive business practice. TI is not responsible or liable for such altered documentation. Information of third parties may be subject to additional restrictions.

Resale of TI products or services with statements different from or beyond the parameters stated by TI for that product or service voids all express and any implied warranties for the associated TI product or service and is an unfair and deceptive business practice. TI is not responsible or liable for any such statements.

TI products are not authorized for use in safety-critical applications (such as life support) where a failure of the TI product would reasonably be expected to cause severe personal injury or death, unless officers of the parties have executed an agreement specifically governing such use. Buyers represent that they have all necessary expertise in the safety and regulatory ramifications of their applications, and acknowledge and agree that they are solely responsible for all legal, regulatory and safety-related requirements concerning their products and any use of TI products in such safety-critical applications, notwithstanding any applications-related information or support that may be provided by TI. Further, Buyers must fully indemnify TI and its representatives against any damages arising out of the use of TI products in such safety-critical applications.

TI products are neither designed nor intended for use in military/aerospace applications or environments unless the TI products are specifically designated by TI as military-grade or "enhanced plastic." Only products designated by TI as military-grade meet military specifications. Buyers acknowledge and agree that any such use of TI products which TI has not designated as military-grade is solely at the Buyer's risk, and that they are solely responsible for compliance with all legal and regulatory requirements in connection with such use.

TI products are neither designed nor intended for use in automotive applications or environments unless the specific TI products are designated by TI as compliant with ISO/TS 16949 requirements. Buyers acknowledge and agree that, if they use any non-designated products in automotive applications, TI will not be responsible for any failure to meet such requirements.

Following are URLs where you can obtain information on other Texas Instruments products and application solutions:

Products

Audio	www.ti.com/audio
Amplifiers	amplifier.ti.com
Data Converters	dataconverter.ti.com
DLP® Products	www.dlp.com
DSP	dsp.ti.com
Clocks and Timers	www.ti.com/clocks
Interface	interface.ti.com
Logic	logic.ti.com
Power Mgmt	power.ti.com
Microcontrollers	microcontroller.ti.com
RFID	www.ti-rfid.com
OMAP Mobile Processors	www.ti.com/omap
Wireless Connectivity	www.ti.com/wirelessconnectivity

Applications

Communications and Telecom	www.ti.com/communications
Computers and Peripherals	www.ti.com/computers
Consumer Electronics	www.ti.com/consumer-apps
Energy and Lighting	www.ti.com/energy
Industrial	www.ti.com/industrial
Medical	www.ti.com/medical
Security	www.ti.com/security
Space, Avionics and Defense	www.ti.com/space-avionics-defense
Transportation and Automotive	www.ti.com/automotive
Video and Imaging	www.ti.com/video

TI E2E Community Home Page

e2e.ti.com

Mailing Address: Texas Instruments, Post Office Box 655303, Dallas, Texas 75265
Copyright © 2011, Texas Instruments Incorporated