

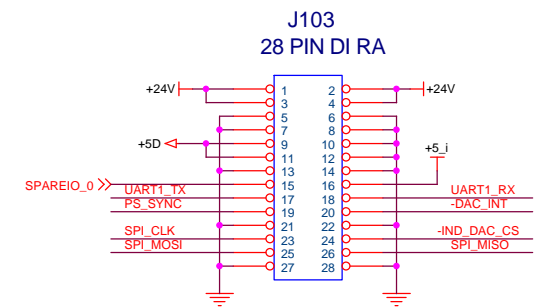
+24 Vdc nom  
+30 Vdc max

J102  
MC1,5/5-G  
+24 RTN  
Out+  
Out(ret)  
GND

Mates w/ MC1,5/5-ST  
1-01375

TP105 TEST POINT  
I\_OUT  
TP107 TEST POINT  
V\_OUT  
TP108 TEST POINT  
BOOST

TP106 TEST POINT  
U106 LM3480/SOT23  
Vin  
GND  
Vout  
+3.3V



Industrial Interface

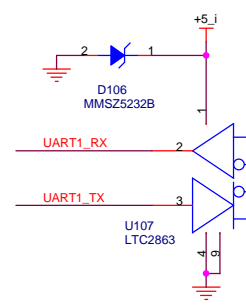
Route J103 5-8 as 24\_Return  
Route J103 10,12 as +5\_Return

Rload < 840 ohm for 20 mA  
Rload < 683 ohm for 24 mA

Route to M101

R108 = 0.1%, 5ppm/deg C

Protects +5\_i from over voltage on U107 lines.



TERMINATOR SELECT  
Pin 1-2: 100 ohm  
Pin 2-3: 100 ohm + 0.1u  
None: no terminator  
reverse side

J104  
MC1,5/5-G  
Tx+  
Tx-  
Rx+  
Rx-  
GND

Mates w/ MC1,5/5-ST  
1-01375

