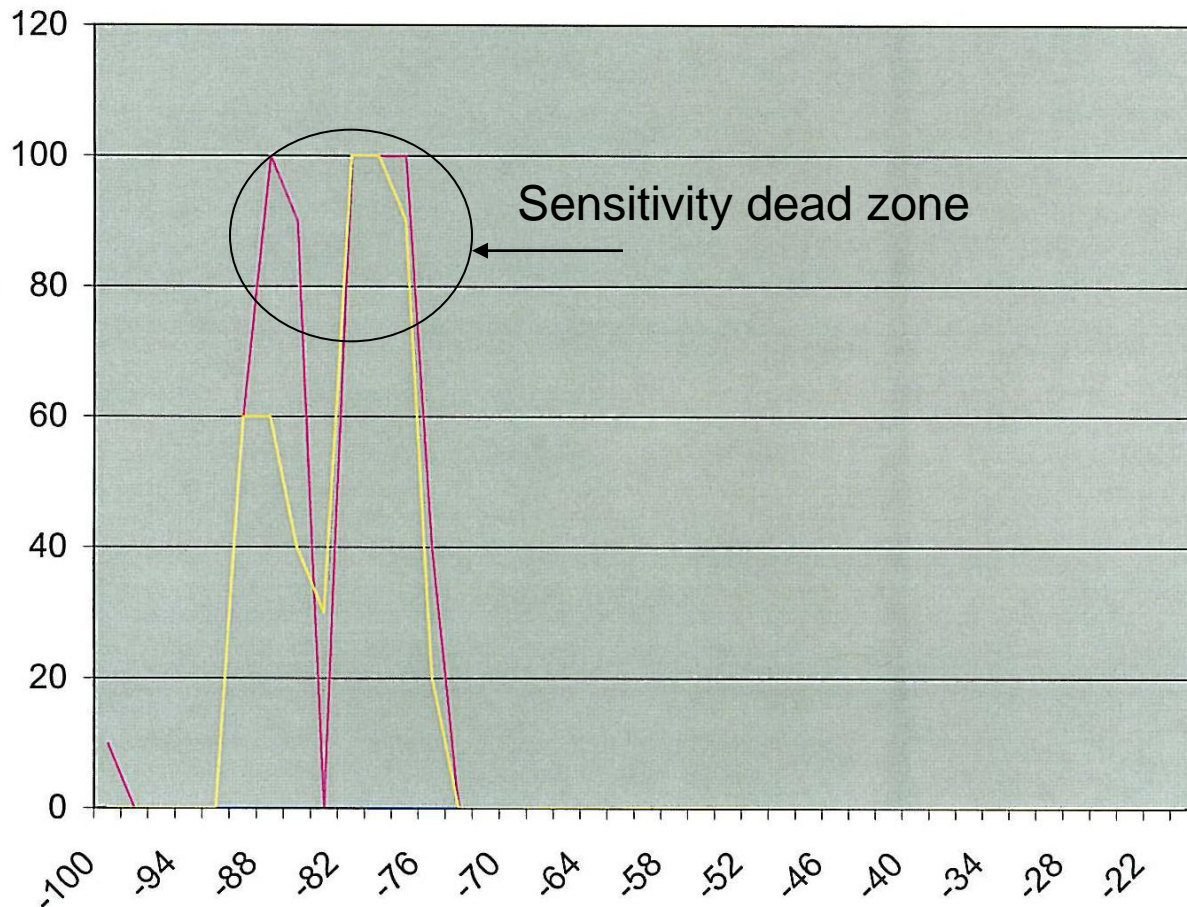


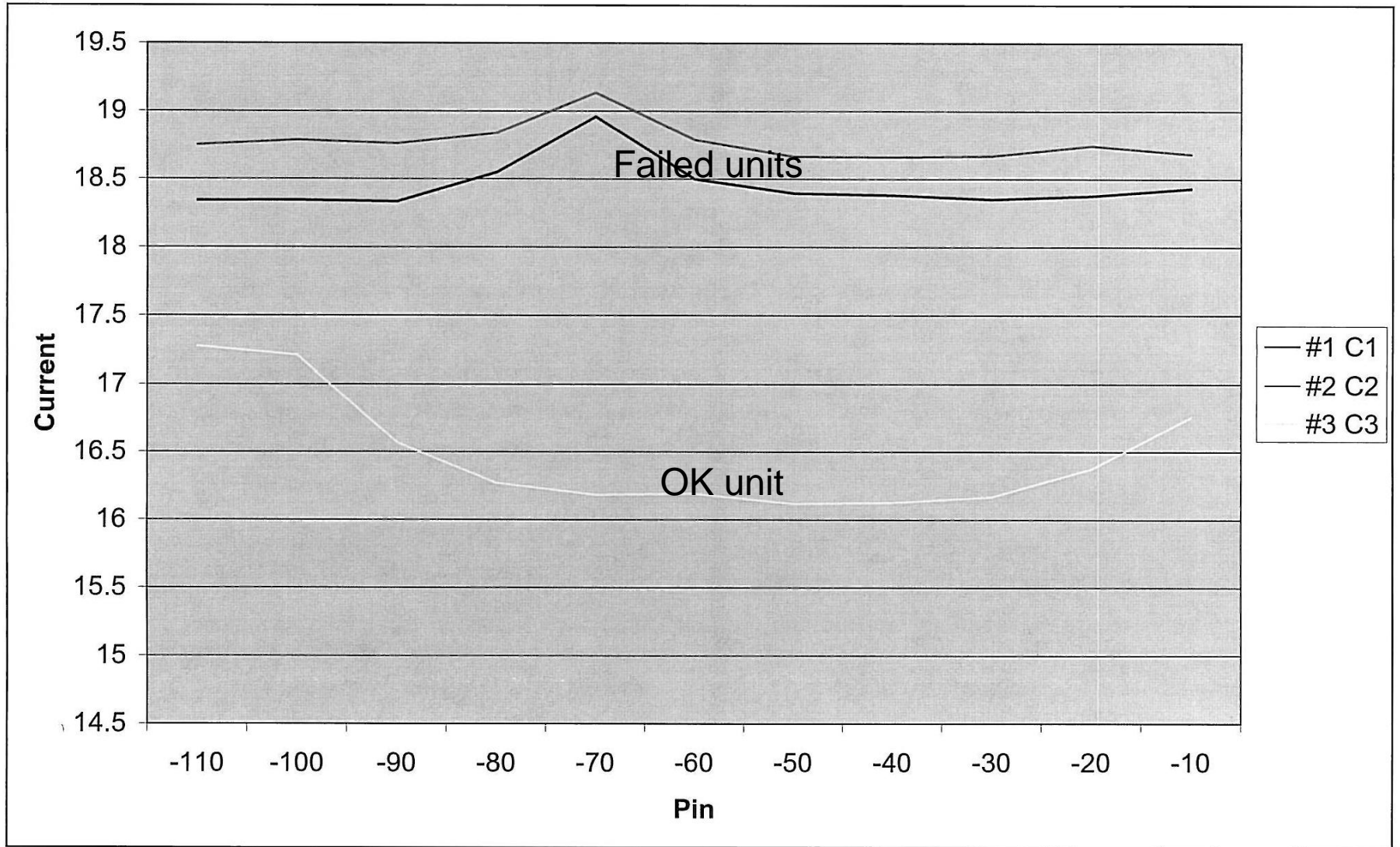
There is a sensitivity dead zone, which shows up as a gap in PER versus input power level between the sensitivity limit and saturation level.

PRE_CC11_E FSK 38.4 kbps



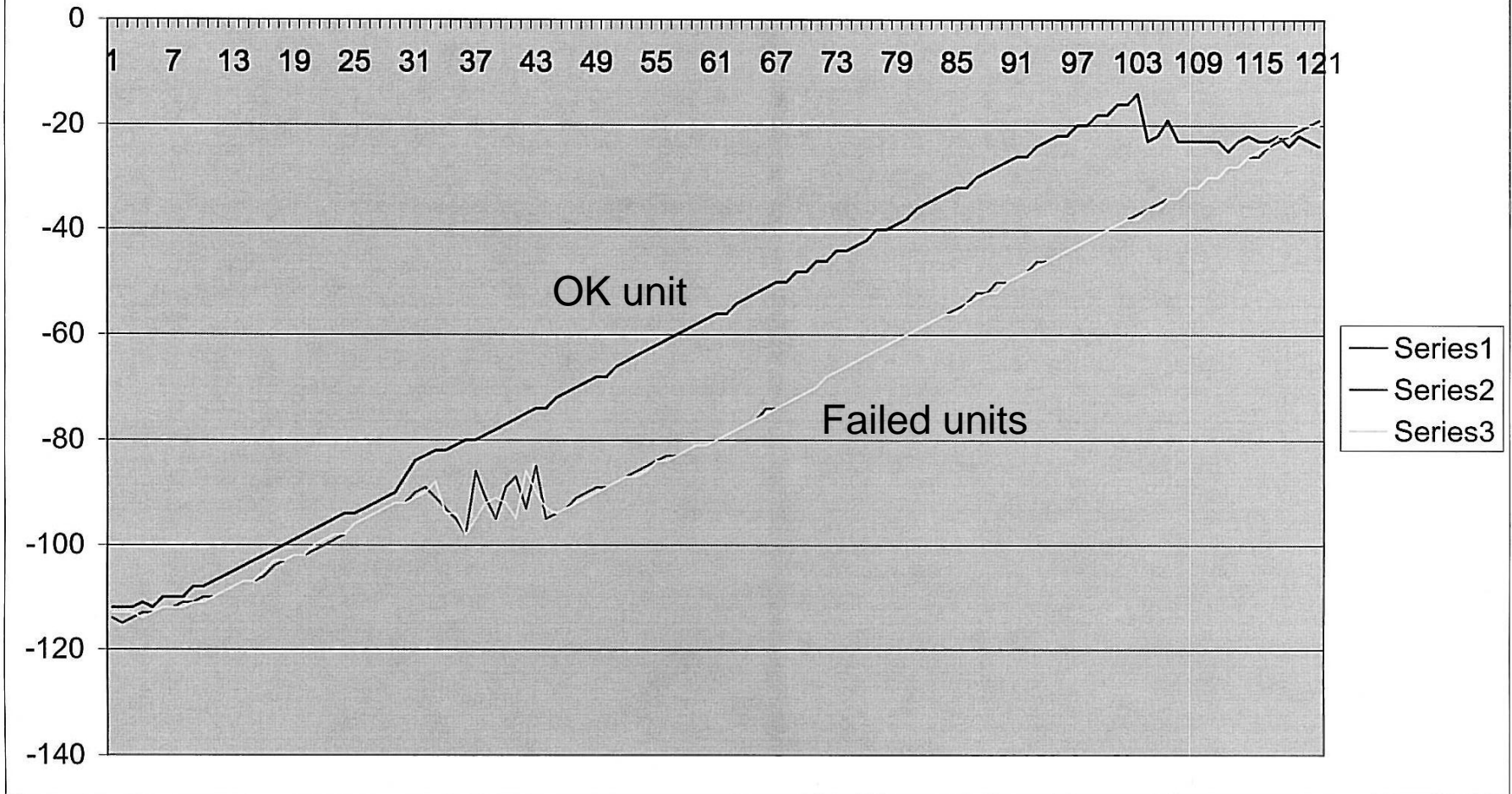
- EM C3 (slot #3), 0°C, VDD=3.00V, CoreVDD=3.00V
- EM C2 (slot #2), 0°C, VDD=3.00V, CoreVDD=3.00V
- EM C1 (slot #1), 0°C, VDD=3.00V, CoreVDD=3.00V

Current consumption versus input power level



RSSI versus input power level

LNA pri 1



Input power level is decimal number (X-axis) minus 120.
i.e input power level is from -120 to 0 dBm