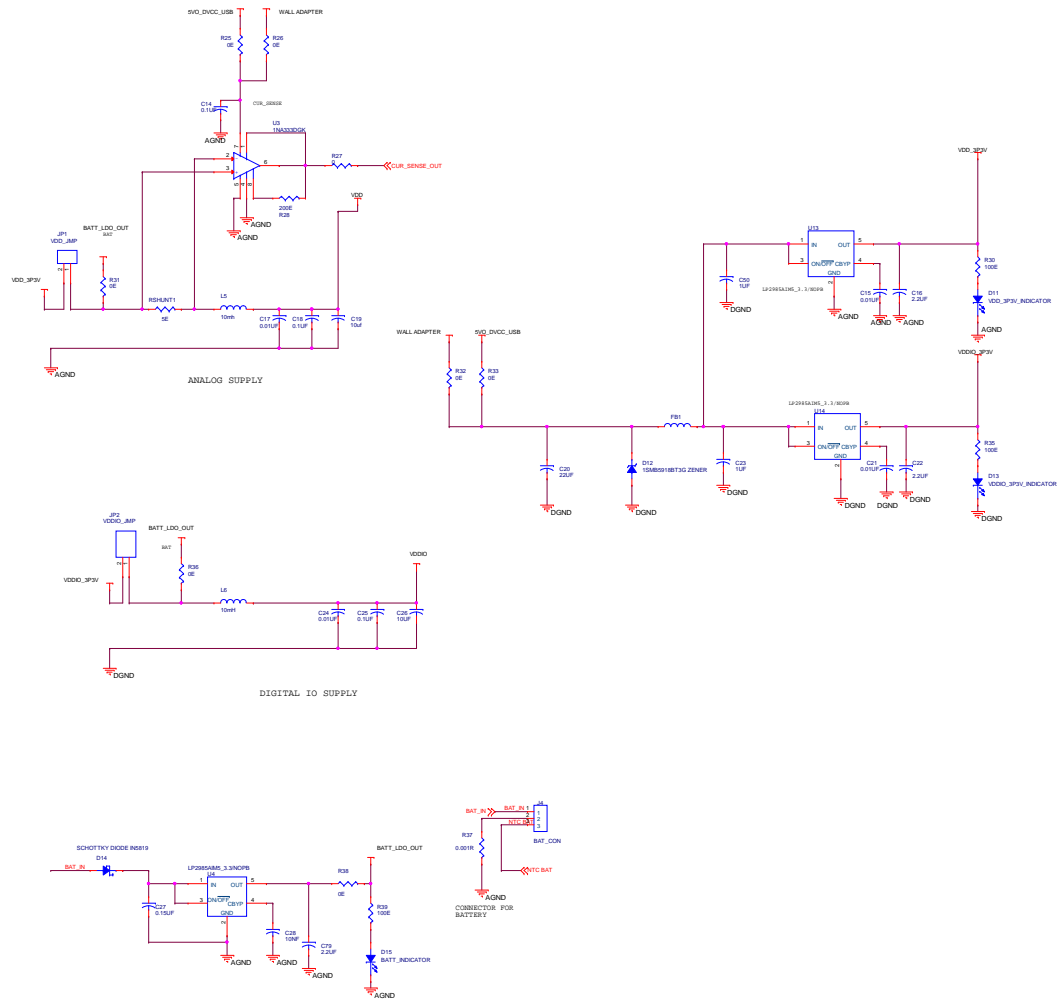
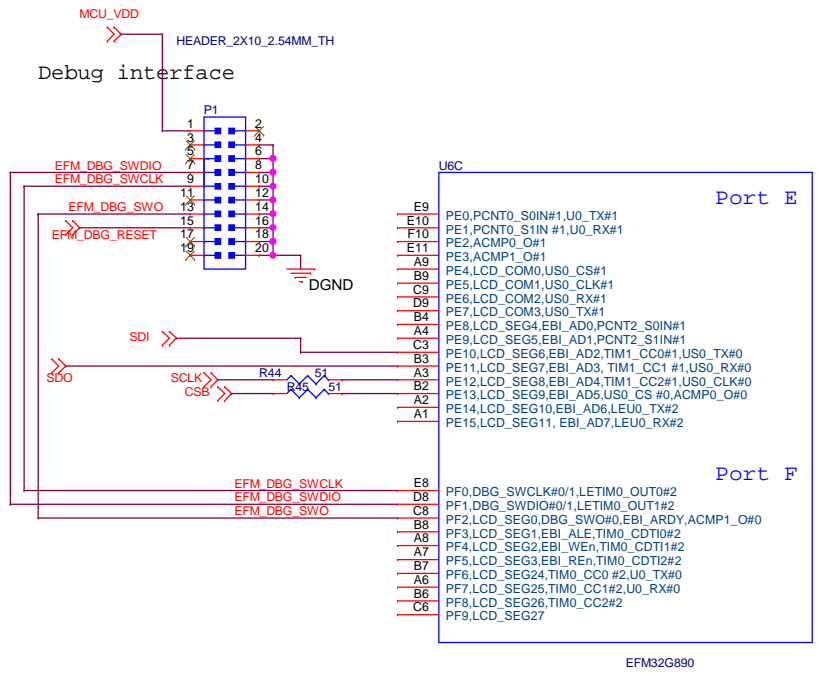


SWING VOLTAGE OF ACCEL IS 2.55V

R22 ,R23, R24 are deleted from this page.

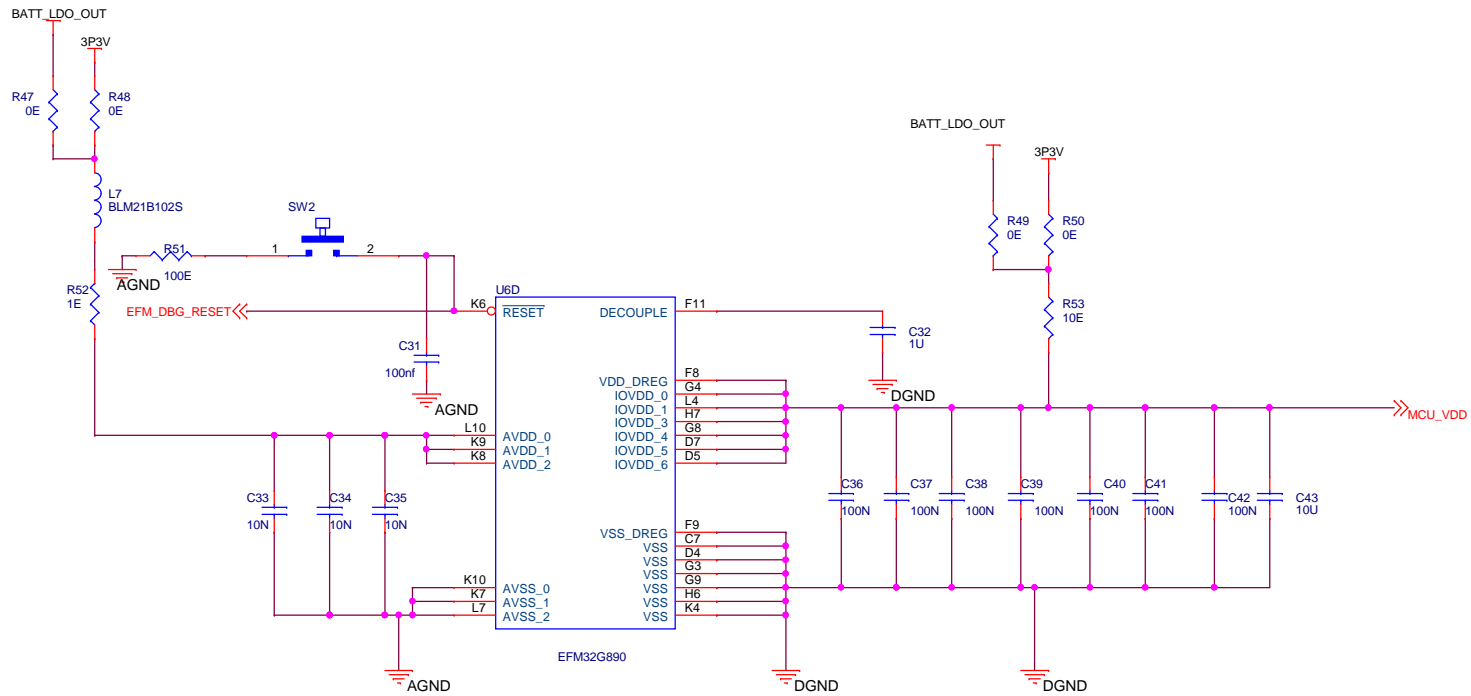


Layout consideration: This regulator should be placed near to LTC3558



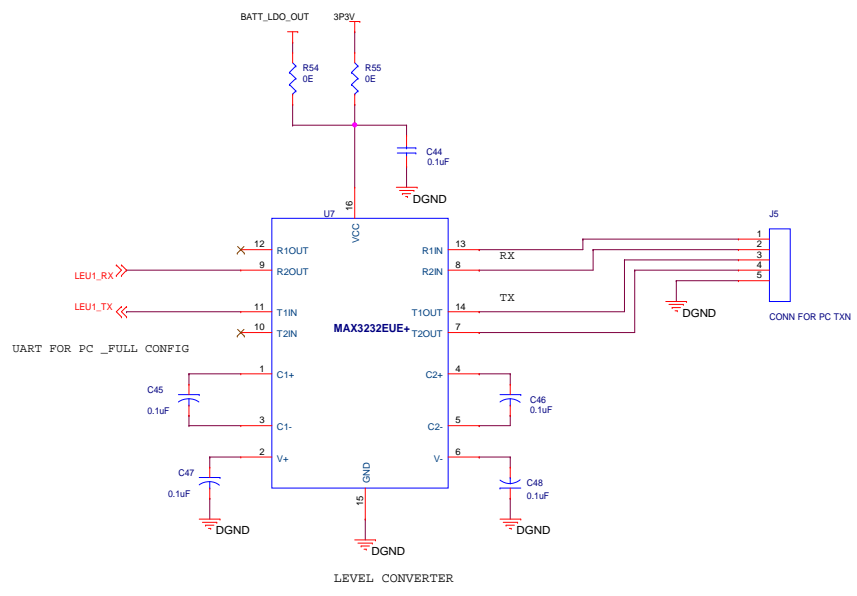
leds are deleted from PORTF and PORTE

Title		
<Title>		
Size	Document Number	Rev
B	<Doc>	<Rev Code>
Date:	Sunday, September 01, 2013	Sheet 5 of 10

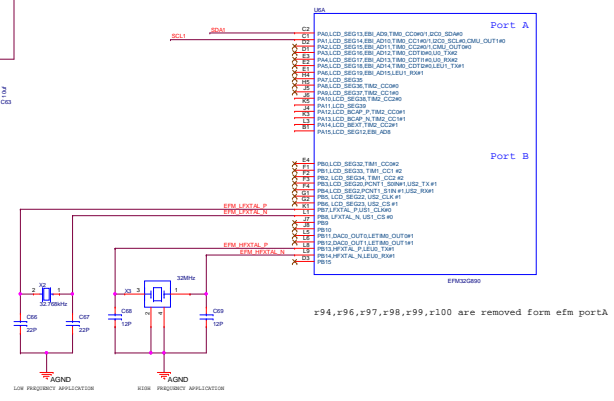
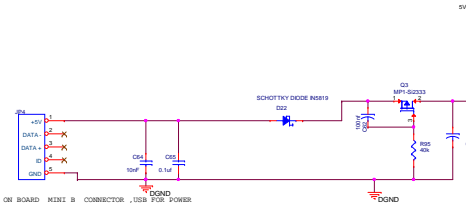
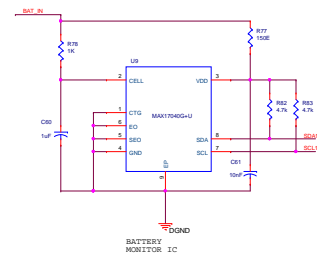
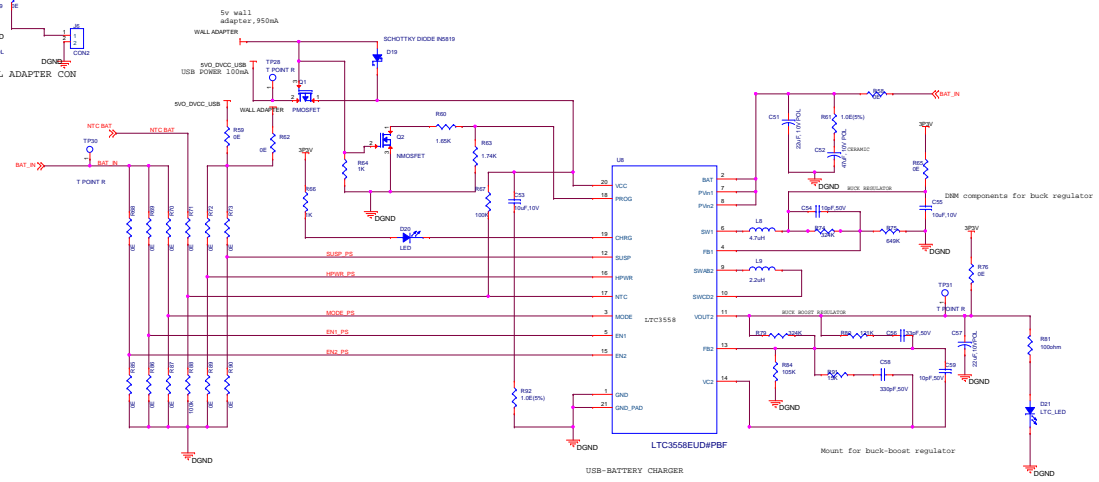
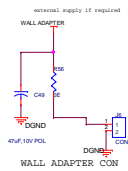


All above 100nf capacitors package is changed from0603 to 0402

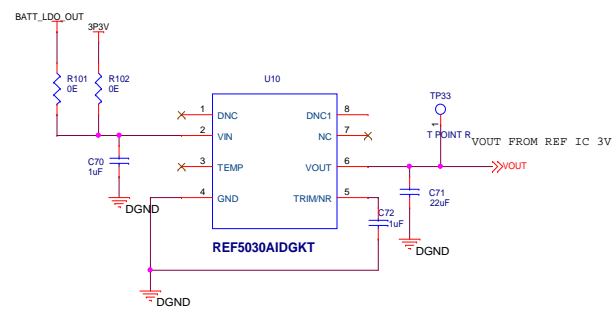
Title		
EFM POWER		
Size	Document Number	Rev
B	<Doc>	<RevCode>
Date:	Sunday, September 01, 2013	Sheet 6 of 10



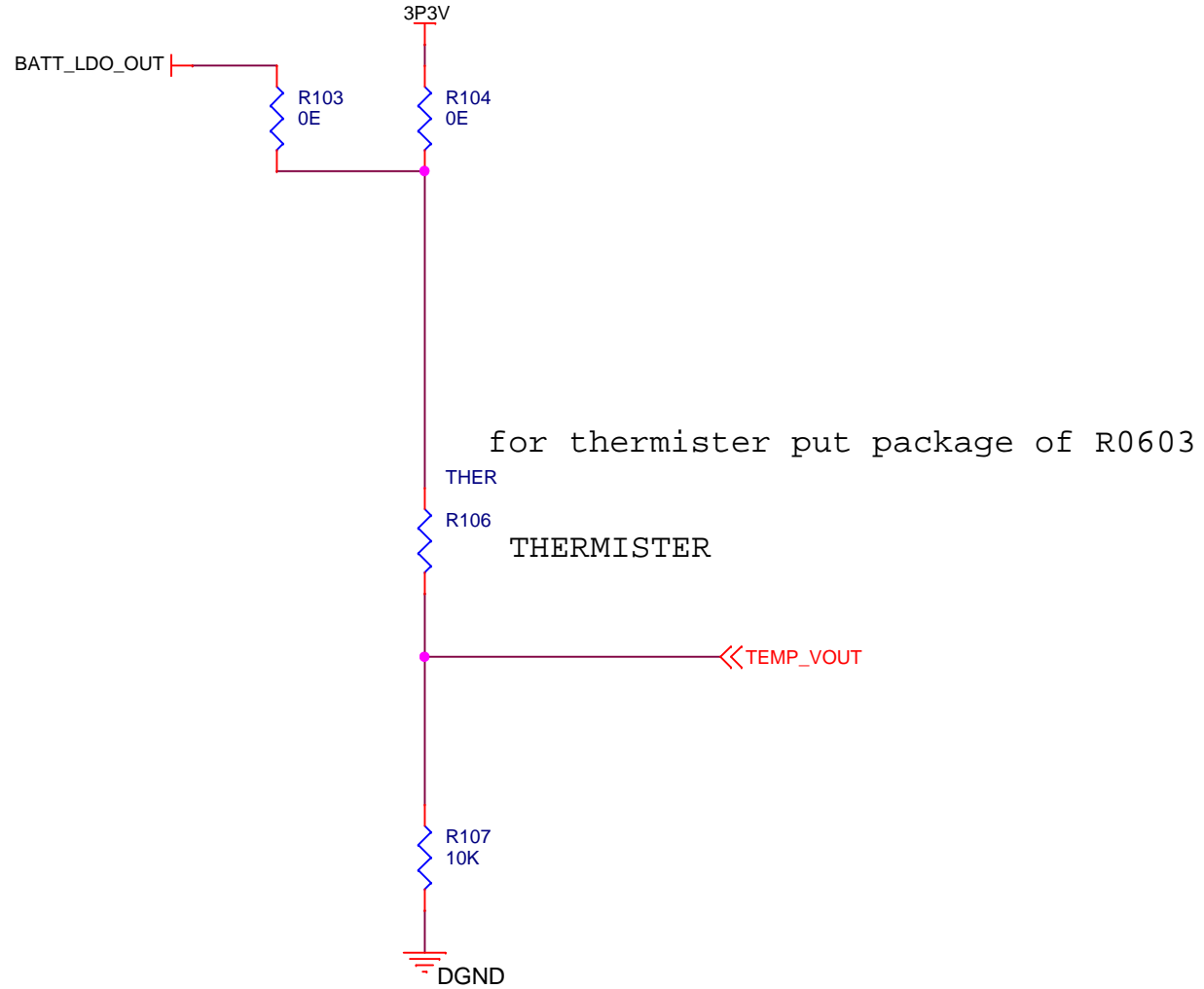
Title	<Title>	
Size	Document Number	Rev
C	<Doc>	<RevCode>
Date:	Sunday, September 01, 2013	Sheet 7 of 10







Title	<Title>	
Size	Document Number	Rev
C	<Doc>	<RevCode>
Date:	Sunday, September 01, 2013	Sheet 9 of 10



Title		
<Title>		
Size	Document Number	Rev
A	<Doc>	<Rev Co
Date:	Sunday, September 01, 2013	Sheet 10 of 10