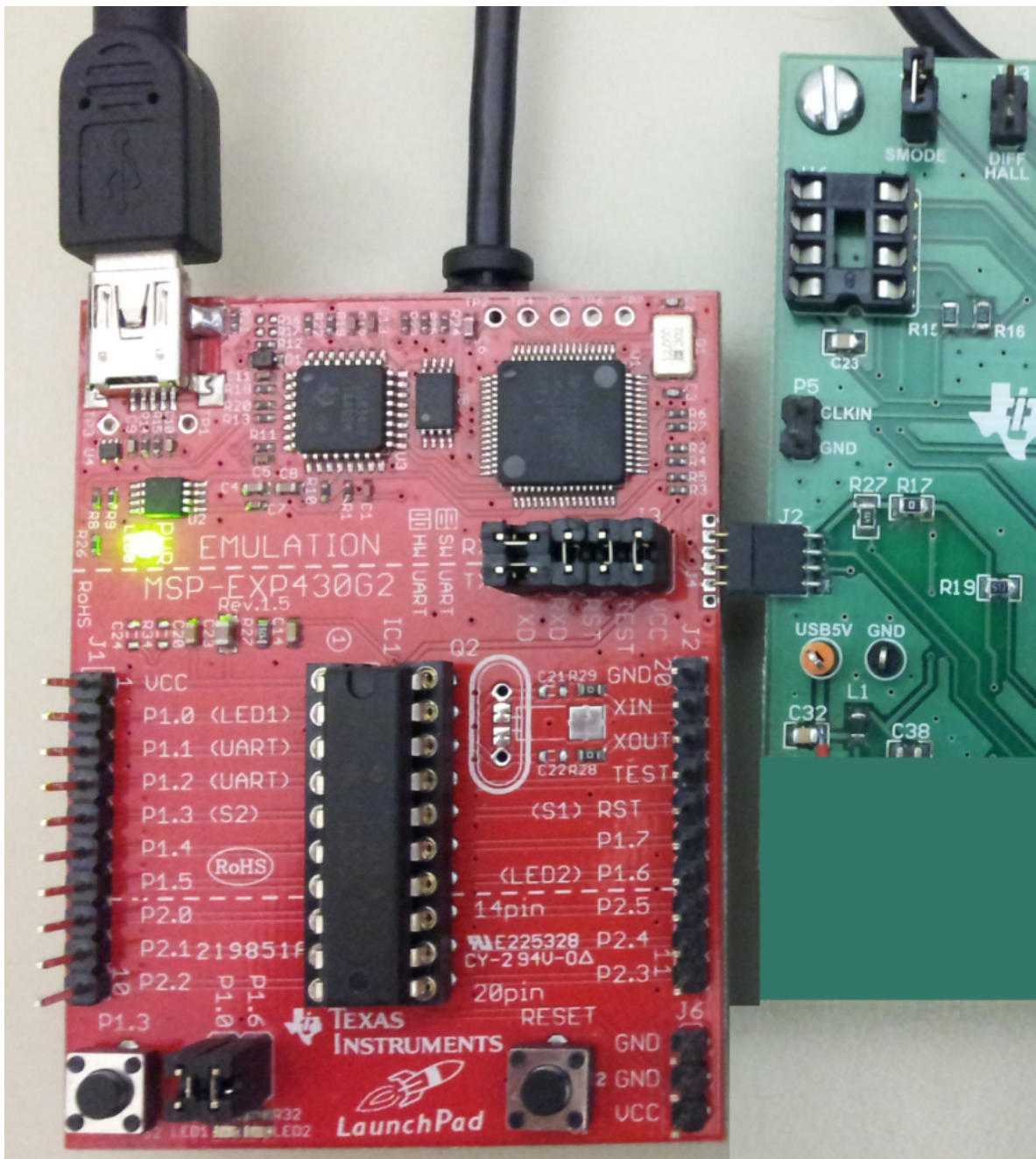


Instructions to program firmware to the DRV8308EVM

Hardware needed:

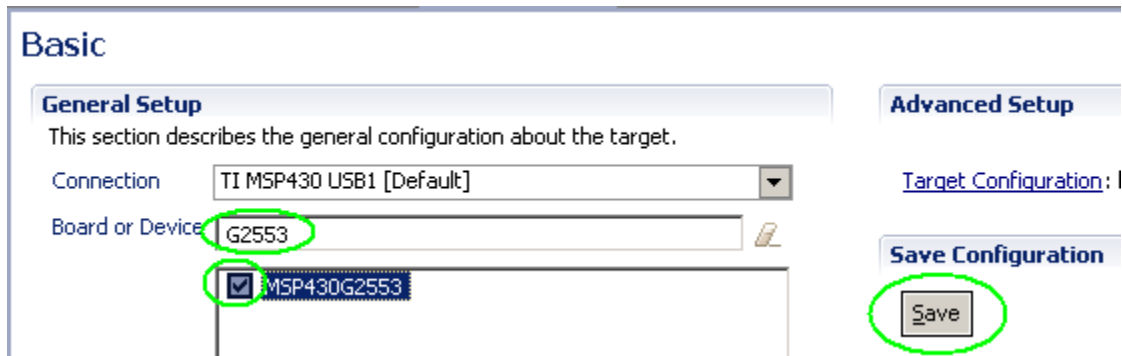
- Computer with Code Composer Studio (CCS)
- DRV8308EVM
- LaunchPad (MSP-EXP430G2) with a 4-pin header soldered to J4
- Mini-USB cable

Step 1: Connect the USB cable between the LaunchPad and your computer, and connect the LaunchPad's J4 header to the DRV8308EVM's J2 as shown.

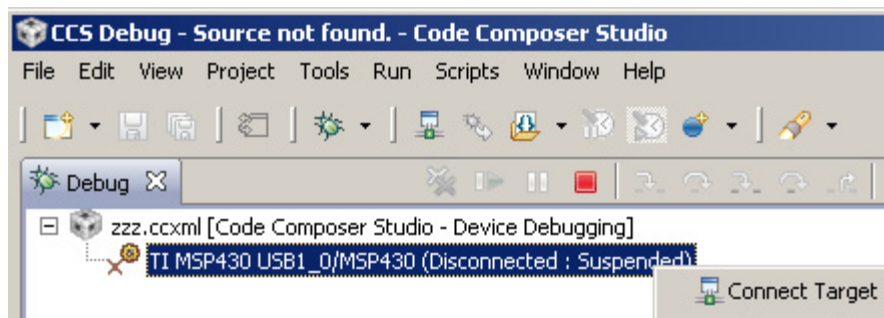



Step 2: Download the firmware: <http://www.ti.com/lit/zip/slvc552>. The file that will be used is ..\Applications\Firmware\appProgram.out.

Step 3: Run CCS. Click View -> Target Configurations, and in the Target Configurations area, right-click, New Target Configuration. Type any file name and Finish. In the middle window area, for “Board or Device” type “G2553”, then select the checkbox, and click Save.



Step 4: In the Target Configurations area, right-click your newly created .ccxml file, and “Launch Selected Configuration”. On the next screen, right-click the 2nd row and click “Connect Target”.



Step 5: A 3rd row will appear. Now click menu “Run”, “Load”, “Load Program”. Browse to the .out file and click OK. Once “MSP430: Loading complete” appears, programming is complete. Ignore any red text messages. Click the Stop button  and disconnect the DRV8308EVM.